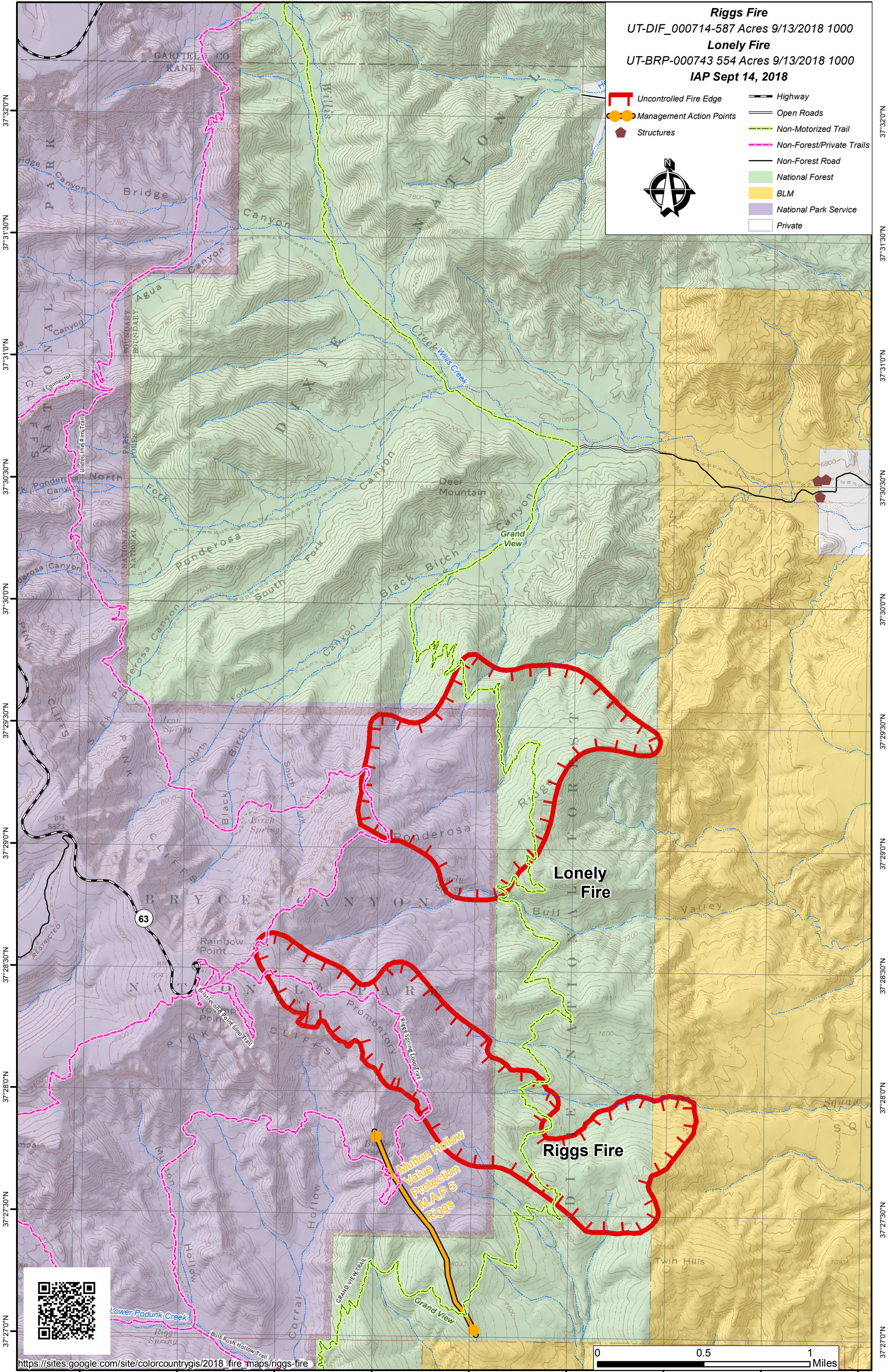


112°15'0"W 112°14'30"W 112°14'0"W 112°13'30"W 112°13'0"W 112°12'30"W 112°12'0"W 112°11'30"W



Riggs Fire
UT-DIF_000714-587 Acres 9/13/2018 1000
Lonely Fire
UT-BRP-000743 554 Acres 9/13/2018 1000
IAP Sept 14, 2018

- Uncontrolled Fire Edge
- Management Action Points
- Structures
- Highway
- Open Roads
- Non-Motorized Trail
- Non-Forest/Private Trails
- Non-Forest Road
- National Forest
- BLM
- National Park Service
- Private



37°32'0"N
37°31'30"N
37°31'0"N
37°30'30"N
37°30'0"N
37°29'30"N
37°29'0"N
37°28'30"N
37°28'0"N
37°27'30"N
37°27'0"N

37°32'0"N
37°31'30"N
37°31'0"N
37°30'30"N
37°30'0"N
37°29'30"N
37°29'0"N
37°28'30"N
37°28'0"N
37°27'30"N
37°27'0"N



https://sites.google.com/site/colorcountrygis/2018_fire_maps/riggs-fire

0 0.5 1 Miles

112°15'0"W 112°14'30"W 112°14'0"W 112°13'30"W 112°13'0"W 112°12'30"W 112°12'0"W 112°11'30"W 112°11'0"W