

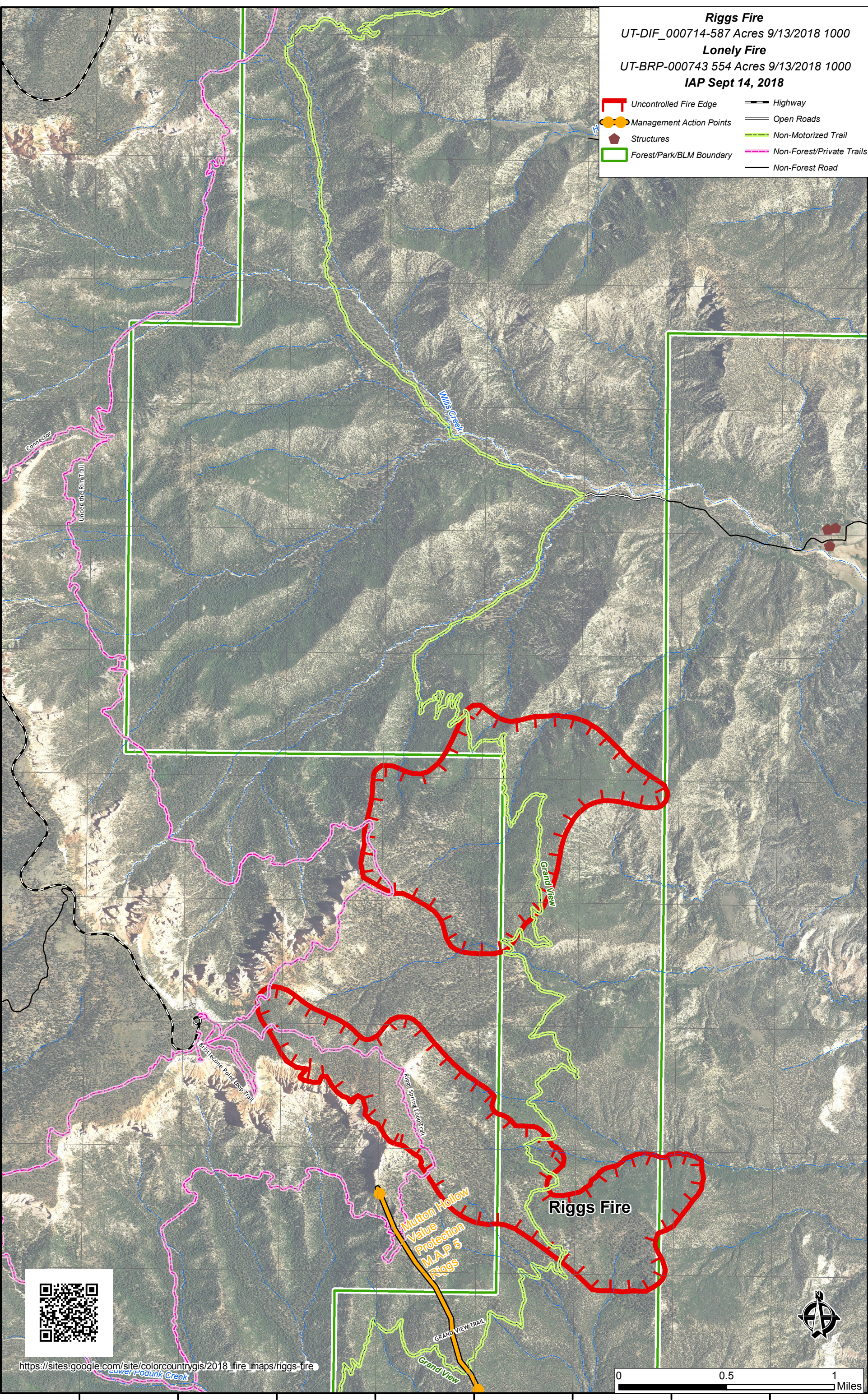
112°15'0"W 112°14'30"W 112°14'0"W 112°13'30"W 112°13'0"W 112°12'30"W 112°12'0"W 112°11'30"W

37°32'30"N  
37°32'0"N  
37°31'30"N  
37°31'0"N  
37°30'30"N  
37°30'0"N  
37°29'30"N  
37°29'0"N  
37°28'30"N  
37°28'0"N  
37°27'30"N  
37°27'0"N

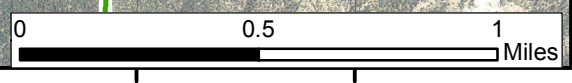
37°32'30"N  
37°32'0"N  
37°31'30"N  
37°31'0"N  
37°30'30"N  
37°30'0"N  
37°29'30"N  
37°29'0"N  
37°28'30"N  
37°28'0"N  
37°27'30"N  
37°27'0"N

**Riggs Fire**  
 UT-DIF\_000714-587 Acres 9/13/2018 1000  
**Lonely Fire**  
 UT-BRP-000743 554 Acres 9/13/2018 1000  
**IAP Sept 14, 2018**

	Uncontrolled Fire Edge		Highway
	Management Action Points		Open Roads
	Structures		Non-Motorized Trail
	Forest/Park/BLM Boundary		Non-Forest/Private Trails
			Non-Forest Road



[https://sites.google.com/site/colorcountrygis/2018\\_fire\\_maps/riggs-fire](https://sites.google.com/site/colorcountrygis/2018_fire_maps/riggs-fire)



112°15'0"W 112°14'30"W 112°14'0"W 112°13'30"W 112°13'0"W 112°12'30"W 112°12'0"W 112°11'30"W