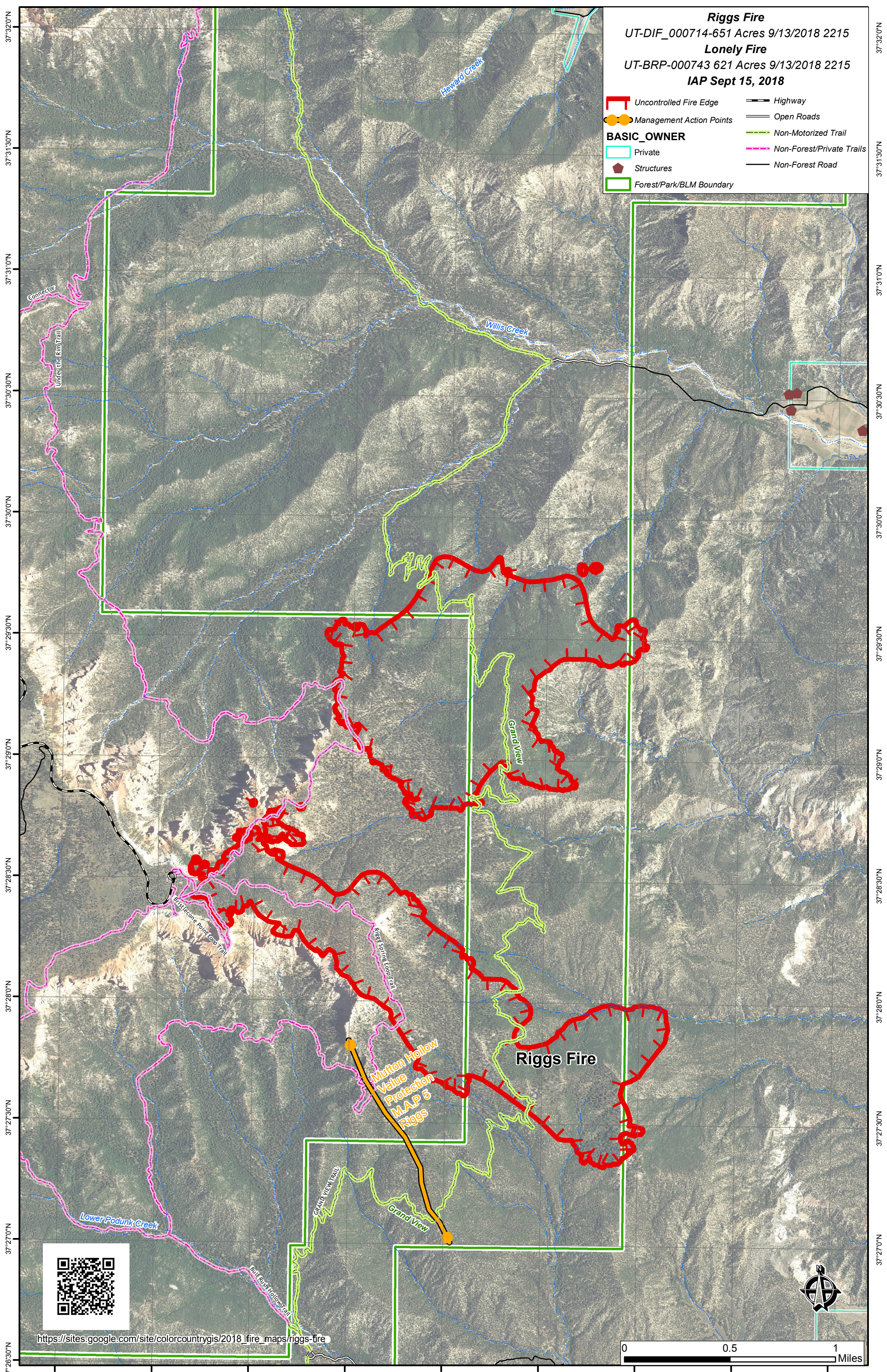


112°15'0"W 112°14'30"W 112°14'0"W 112°13'30"W 112°13'0"W 112°12'30"W 112°12'0"W 112°11'30"W 112°11'0"W



**Riggs Fire**  
UT-DIF\_000714-651 Acres 9/13/2018 2215  
**Lonely Fire**  
UT-BRP-000743 621 Acres 9/13/2018 2215  
**IAP Sept 15, 2018**

- Uncontrolled Fire Edge
- Management Action Points
- BASIC\_OWNER**
- Private
- Structures
- Forest/Park/BLM Boundary
- Highway
- Open Roads
- Non-Motorized Trail
- Non-Forest/Private Trails
- Non-Forest Road

37°32'0"N  
37°31'30"N  
37°31'0"N  
37°30'30"N  
37°30'0"N  
37°29'30"N  
37°29'0"N  
37°28'30"N  
37°28'0"N  
37°27'30"N  
37°27'0"N  
37°26'30"N

37°32'0"N  
37°31'30"N  
37°31'0"N  
37°30'30"N  
37°30'0"N  
37°29'30"N  
37°29'0"N  
37°28'30"N  
37°28'0"N  
37°27'30"N  
37°27'0"N

Connector  
Under the Rim Trail

Hebard Creek

Willis Creek

Grand View

**Riggs Fire**

Mutton Hollow  
Value  
Protection  
M.A.P 5  
Riggs

Lower Podunk Creek

GRAND VIEW TRAIL

Grand View

BLM Rust Hollow Trail



[https://sites.google.com/site/colorcountrygis/2018\\_fire\\_maps/riggs-fire](https://sites.google.com/site/colorcountrygis/2018_fire_maps/riggs-fire)



0 0.5 1 Miles

112°15'0"W 112°14'30"W 112°14'0"W 112°13'30"W 112°13'0"W 112°12'30"W 112°12'0"W 112°11'30"W 112°11'0"W