

112°14'30"W 112°14'0"W 112°13'30"W 112°13'0"W 112°12'30"W 112°12'0"W 112°11'30"W 112°11'0"W 112°10'30"W


37°31'30"N  
37°31'0"N  
37°30'30"N  
37°30'0"N  
37°29'30"N  
37°29'0"N  
37°28'30"N  
37°28'0"N  
37°27'30"N  
37°27'0"N  
37°26'30"N  
37°26'0"N

**Riggs Fire**  
UT-DIF\_000714-1077 Acres 9/17/2018 1215

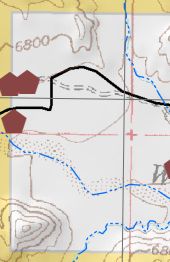
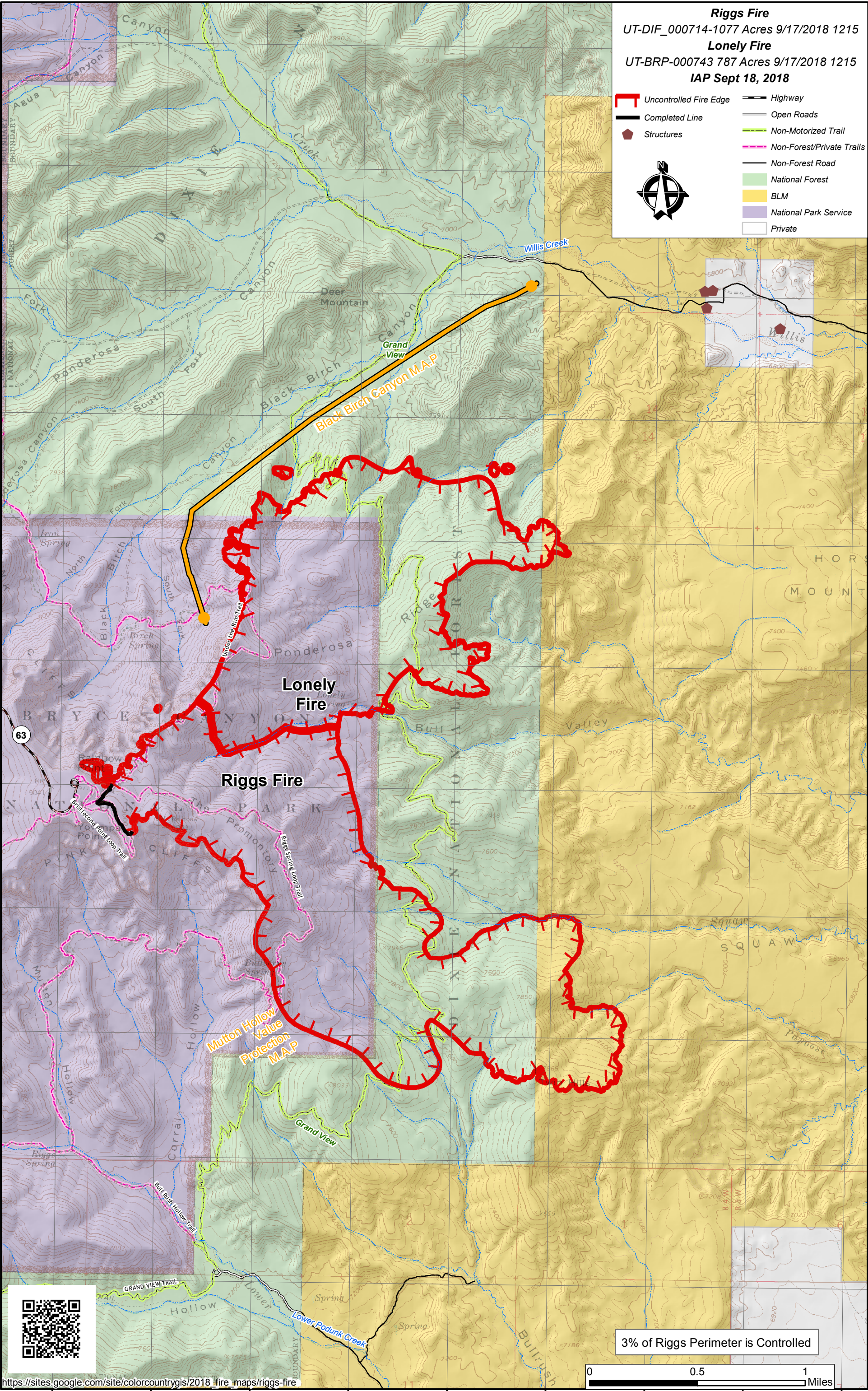
**Lonely Fire**  
UT-BRP-000743 787 Acres 9/17/2018 1215

**IAP Sept 18, 2018**

- Uncontrolled Fire Edge
- Completed Line
- Structures
- Highway
- Open Roads
- Non-Motorized Trail
- Non-Forest/Private Trails
- Non-Forest Road
- National Forest
- BLM
- National Park Service
- Private



37°31'30"N  
37°31'0"N  
37°30'30"N  
37°30'0"N  
37°29'30"N  
37°29'0"N  
37°28'30"N  
37°28'0"N  
37°27'30"N  
37°27'0"N  
37°26'30"N  
37°26'0"N



Mutton Hollow  
Valley  
Protection  
M.A.P

3% of Riggs Perimeter is Controlled

