

112°14'30"W 112°14'0"W 112°13'30"W 112°13'0"W 112°12'30"W 112°12'0"W 112°11'30"W 112°11'0"W 112°10'30"W

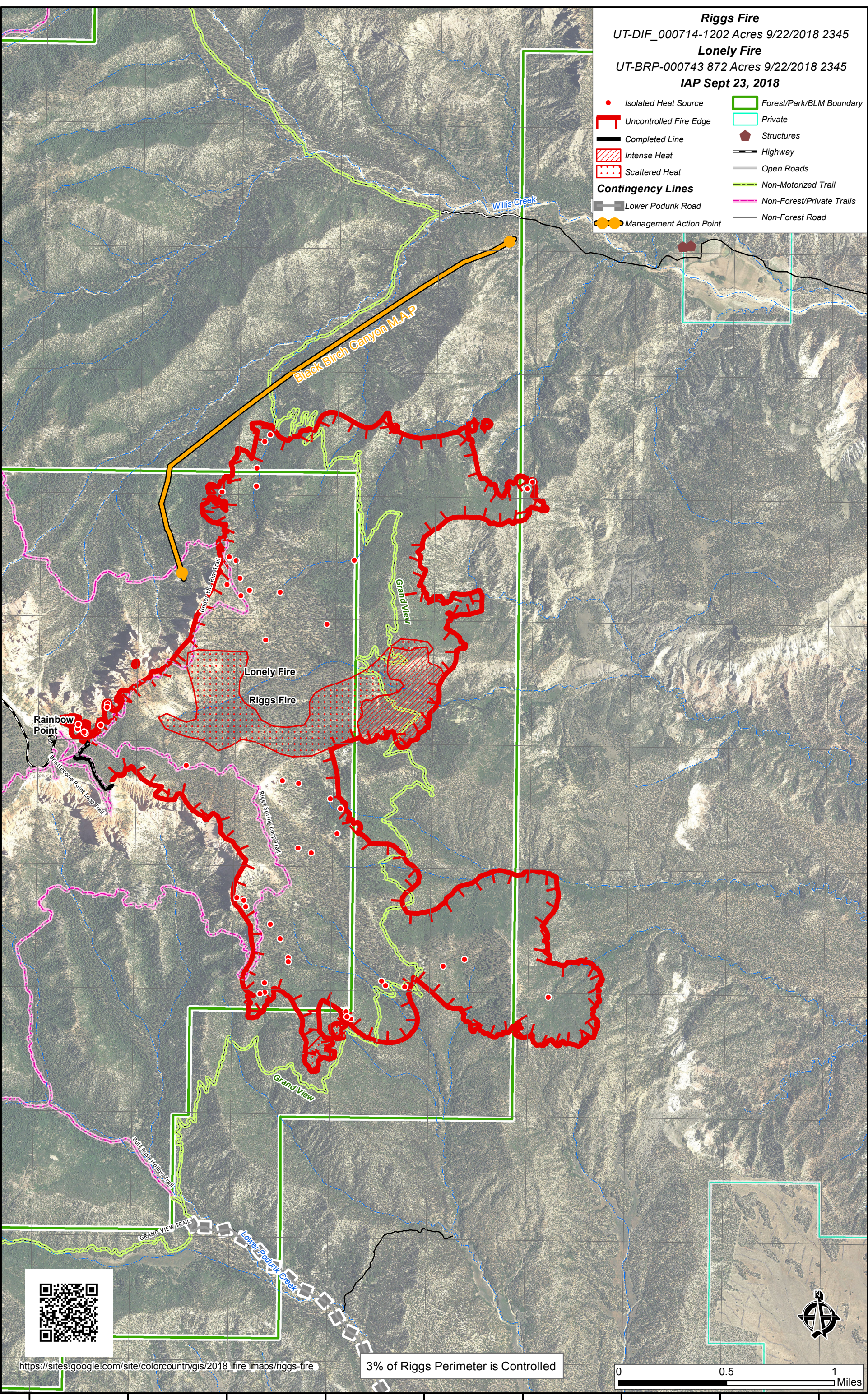
37°31'0"N
37°30'30"N
37°30'0"N
37°29'30"N
37°29'0"N
37°28'30"N
37°28'0"N
37°27'30"N
37°27'0"N
37°26'30"N
37°26'0"N

37°31'30"N
37°31'0"N
37°30'30"N
37°30'0"N
37°29'30"N
37°29'0"N
37°28'30"N
37°28'0"N
37°27'30"N
37°27'0"N
37°26'30"N
37°26'0"N

Riggs Fire
UT-DIF_000714-1202 Acres 9/22/2018 2345
Lonely Fire
UT-BRP-000743 872 Acres 9/22/2018 2345
IAP Sept 23, 2018

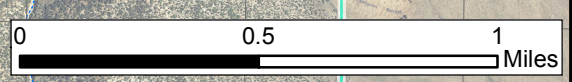
- Isolated Heat Source
- ┌ Uncontrolled Fire Edge
- Completed Line
- Intense Heat
- Scattered Heat
- Lower Podunk Road
- Management Action Point
- Forest/Park/BLM Boundary
- Private
- Structures
- Highway
- Open Roads
- Non-Motorized Trail
- Non-Forest/Private Trails
- Non-Forest Road

Contingency Lines



https://sites.google.com/site/colorcountrygis/2018_fire_maps/riggs-fire

3% of Riggs Perimeter is Controlled



112°14'30"W 112°14'0"W 112°13'30"W 112°13'0"W 112°12'30"W 112°12'0"W 112°11'30"W 112°11'0"W 112°10'30"W