

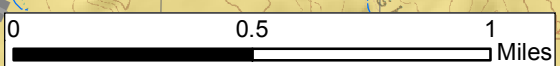
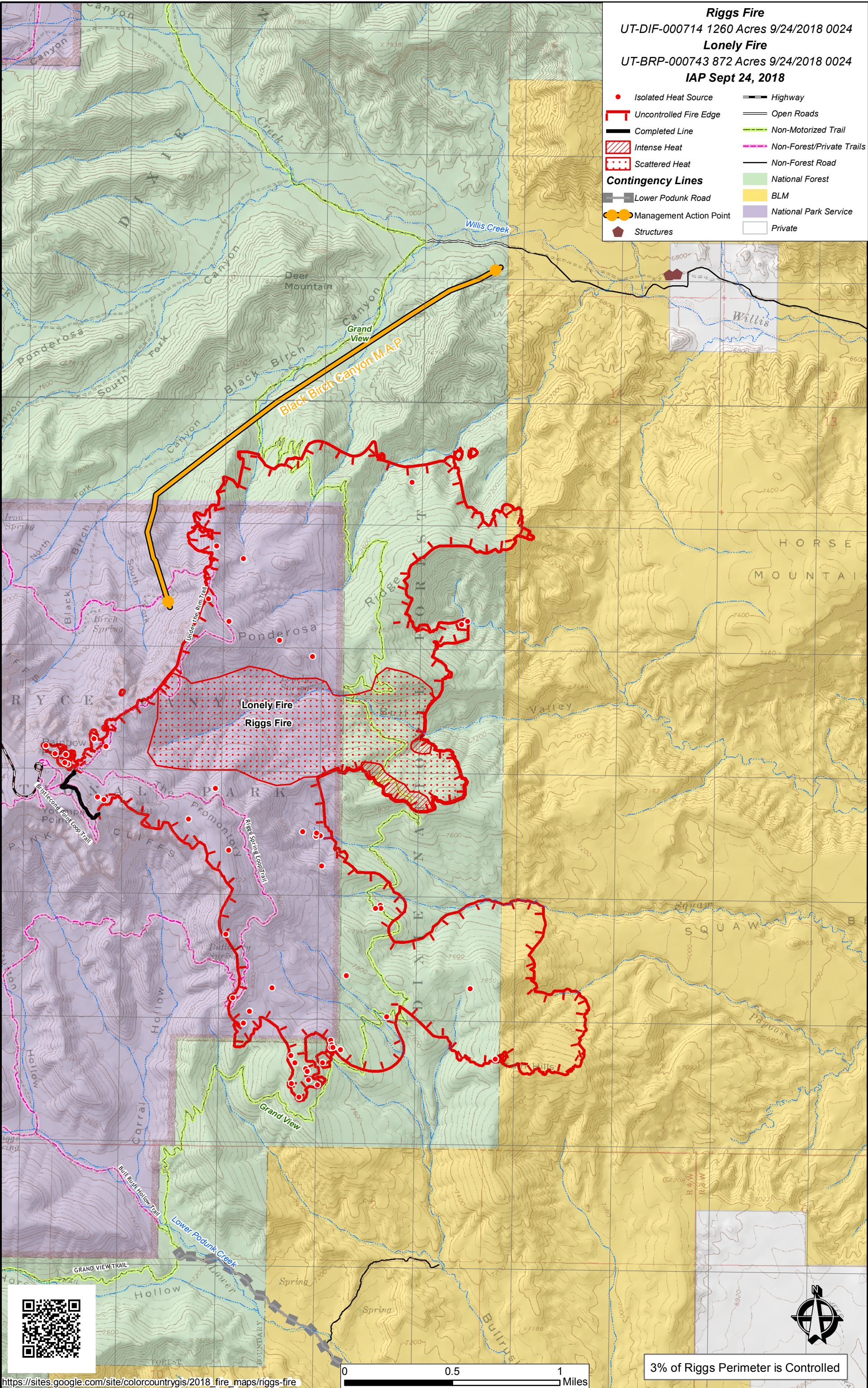
112°14'30"W 112°14'0"W 112°13'30"W 112°13'0"W 112°12'30"W 112°12'0"W 112°11'30"W 112°11'0"W 112°10'30"W

37°31'30"N
37°31'0"N
37°30'30"N
37°30'0"N
37°29'30"N
37°29'0"N
37°28'30"N
37°28'0"N
37°27'30"N
37°27'0"N
37°26'30"N
37°26'0"N

37°31'30"N
37°31'0"N
37°30'30"N
37°30'0"N
37°29'30"N
37°29'0"N
37°28'30"N
37°28'0"N
37°27'30"N
37°27'0"N
37°26'30"N
37°26'0"N

Riggs Fire
UT-DIF-000714 1260 Acres 9/24/2018 0024
Lonely Fire
UT-BRP-000743 872 Acres 9/24/2018 0024
IAP Sept 24, 2018

- Isolated Heat Source
- Uncontrolled Fire Edge
- Completed Line
- Intense Heat
- Scattered Heat
- Contingency Lines
- Lower Podunk Road
- Management Action Point
- Structures
- Highway
- Open Roads
- Non-Motorized Trail
- Non-Forest/Private Trails
- Non-Forest Road
- National Forest
- BLM
- National Park Service
- Private



3% of Riggs Perimeter is Controlled

https://sites.google.com/site/colorcountrygis/2018_fire_maps/riggs-fire

112°14'30"W 112°14'0"W 112°13'30"W 112°13'0"W 112°12'30"W 112°12'0"W 112°11'30"W 112°11'0"W 112°10'30"W