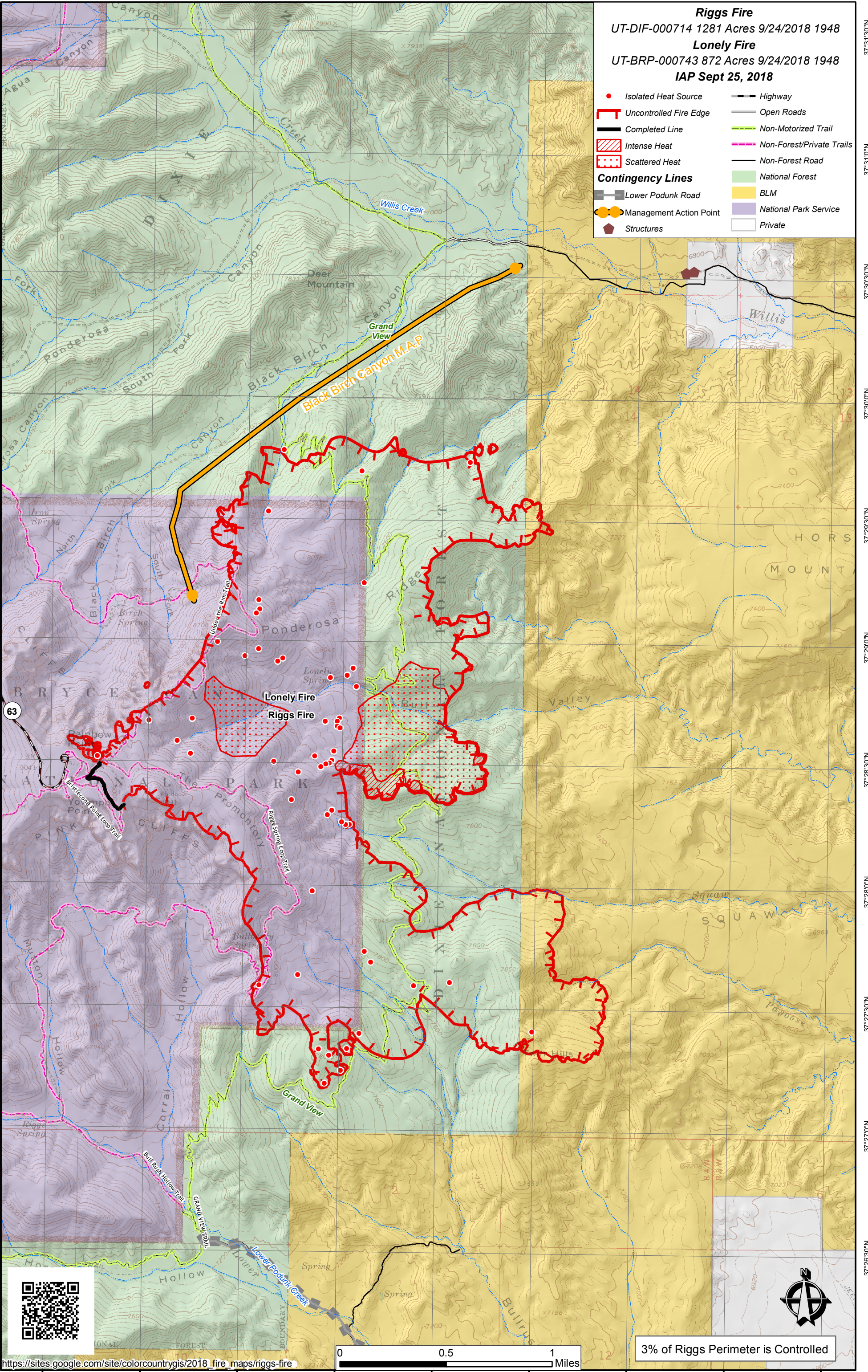


112°14'30"W 112°14'0"W 112°13'30"W 112°13'0"W 112°12'30"W 112°12'0"W 112°11'30"W 112°11'0"W 112°10'30"W

37°31'30"N  
37°31'0"N  
37°30'30"N  
37°30'0"N  
37°29'30"N  
37°29'0"N  
37°28'30"N  
37°28'0"N  
37°27'30"N  
37°27'0"N  
37°26'30"N  
37°26'0"N

**Riggs Fire**  
UT-DIF-000714 1281 Acres 9/24/2018 1948  
**Lonely Fire**  
UT-BRP-000743 872 Acres 9/24/2018 1948  
**IAP Sept 25, 2018**

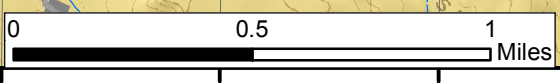
- Isolated Heat Source
- Uncontrolled Fire Edge
- Completed Line
- Intense Heat
- Scattered Heat
- Contingency Lines
- Lower Podunk Road
- Management Action Point
- Structures
- Highway
- Open Roads
- Non-Motorized Trail
- Non-Forest/Private Trails
- Non-Forest Road
- National Forest
- BLM
- National Park Service
- Private



37°31'30"N  
37°31'0"N  
37°30'30"N  
37°30'0"N  
37°29'30"N  
37°29'0"N  
37°28'30"N  
37°28'0"N  
37°27'30"N  
37°27'0"N  
37°26'30"N  
37°26'0"N



[https://sites.google.com/site/colorcountryrigs/2018\\_fire\\_maps/riggs-fire](https://sites.google.com/site/colorcountryrigs/2018_fire_maps/riggs-fire)



3% of Riggs Perimeter is Controlled



112°14'30"W 112°14'0"W 112°13'30"W 112°13'0"W 112°12'30"W 112°12'0"W 112°11'30"W 112°11'0"W 112°10'30"W