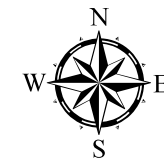





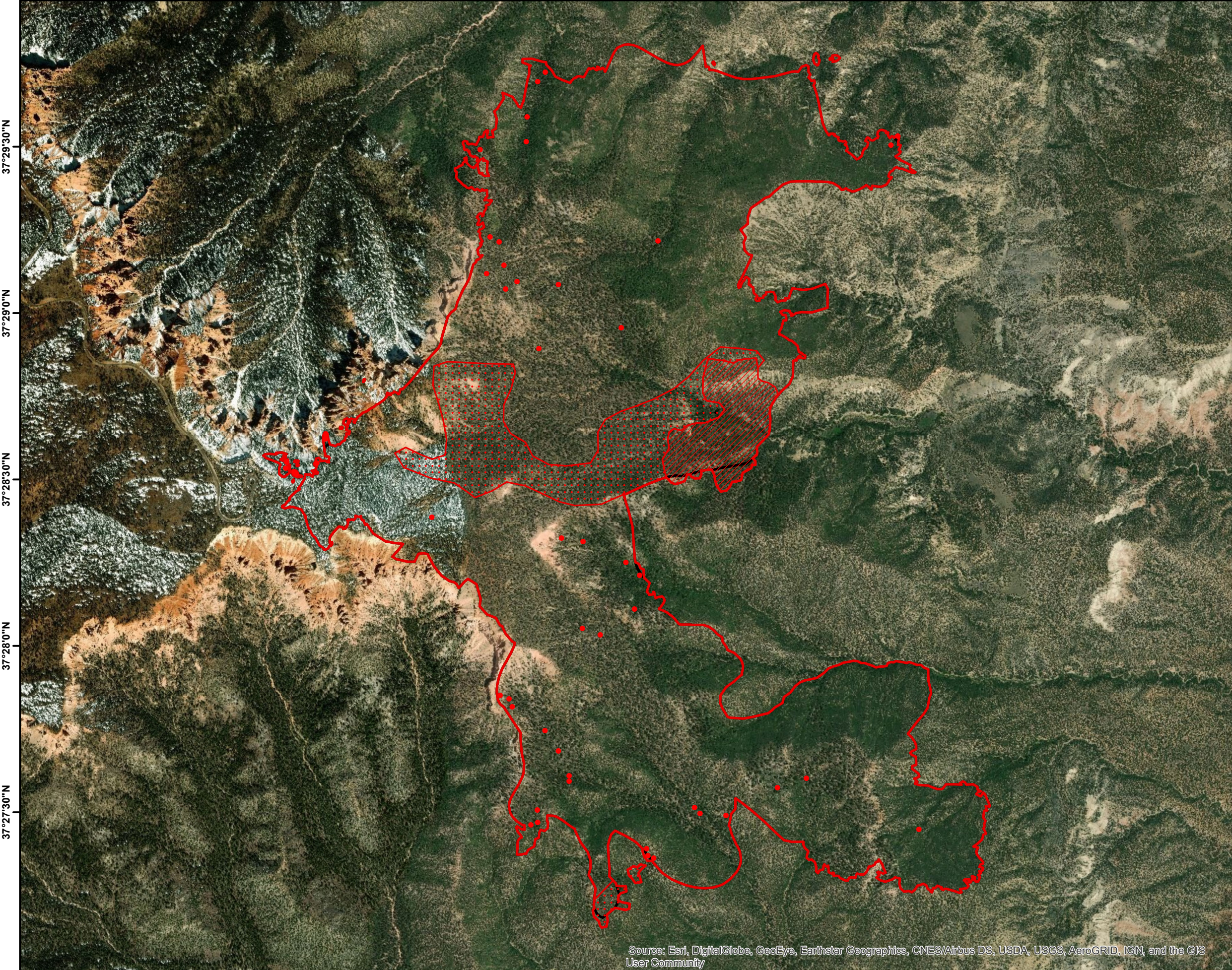


112°15'0"W 112°14'30"W 112°14'0"W 112°13'30"W 112°13'0"W 112°12'30"W 112°12'0"W 112°11'30"W 112°11'0"W

Riggs UT-DIF-000714 Infrared Heat Sources



-  Heat Perimeter
 -  Intense Heat
 -  Scattered Heat
 -  Isolated Heat Sources
 -  Previous Heat Perimeter
- NAD 1983 UTM Zone 12



37°29'30"N
37°29'0"N
37°28'30"N
37°28'0"N
37°27'30"N



IR Interpreter: Buck Buchanan
Interpreted Acres: 2,074
Date: 09/22/2018
Time Imagery Received: 2345 hrs. MDT

Source: Esri, DigitalGlobe, GeoEye, Earthstar Geographics, CNES/Airbus DS, USDA, USGS, AeroGRID, IGN, and the GIS User Community

112°15'0"W 112°14'30"W 112°14'0"W 112°13'30"W 112°13'0"W 112°12'30"W 112°12'0"W 112°11'30"W 112°11'0"W