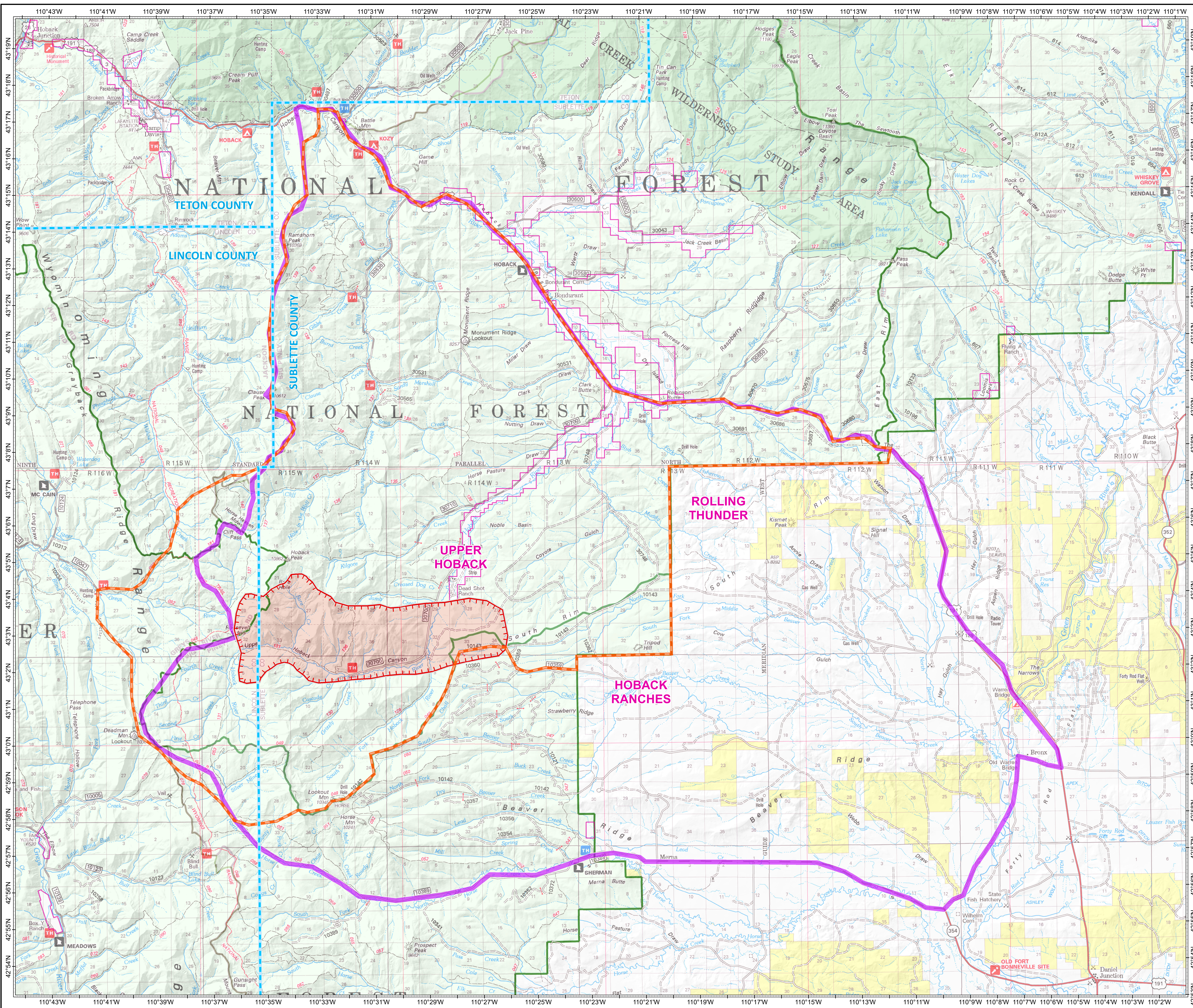


Roosevelt Fire WY-BTF-001823 Situation Map September 18, 2018

approximately 12,252 acres
on September 18, 0800 hr

-  Uncontrolled Fire
-  Planning Area as of September 18
-  Roosevelt Fire Closure Area as of September 17
-  Forest Ranger District Boundary
-  County Boundary
-  Private Inholdings



Great Basin Team 6 GIS
Author: bhanan
Date: 20180918 1729 hr
File: planning_35488_land_2018_Roosevelt_WYBTF001823.mxd
Lat-Long Grid Ticks: 1 minute interval
Projection: NAD83 UTM Zone11

