

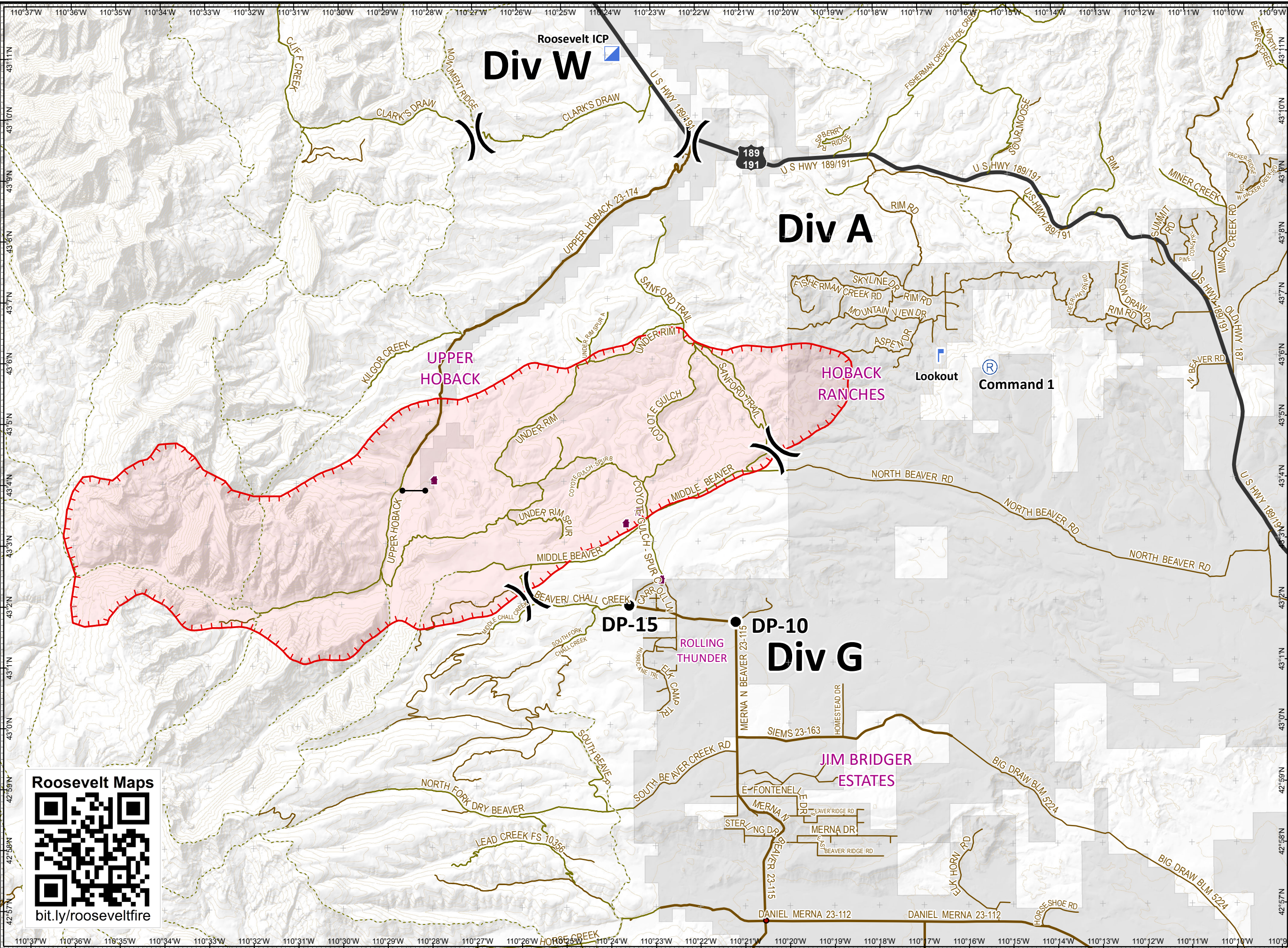
Roosevelt Fire  
 WY-BTF-001823  
 IAP Overview Map  
 September 19, 2018

appx. 29,342 acres on  
 September 18, 1900 hr



Division Break

- Drop Point
- Gate
- ▣ Incident Command Post
- ⏏ Lookout
- Ⓡ Repeater
- ⬜ Value at Risk
- Uncontrolled Fire Edge
- ▭ Private Land
- Roads**
- Local Road
- County
- USFS
- US Highway



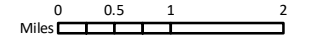
Roosevelt Maps



bit.ly/rooseultfire



Great Basin Team 6 GIS  
 Author: bharsen  
 Date: 20180918 2254 hr  
 File: IAP\_overview\_11x17\_land\_2018\_Roosevelt\_WYBTF001823\_mxd



Projection: NAD83 UTM Zone 12  
 Lat-Long Grid Ticks: 1' minute interval