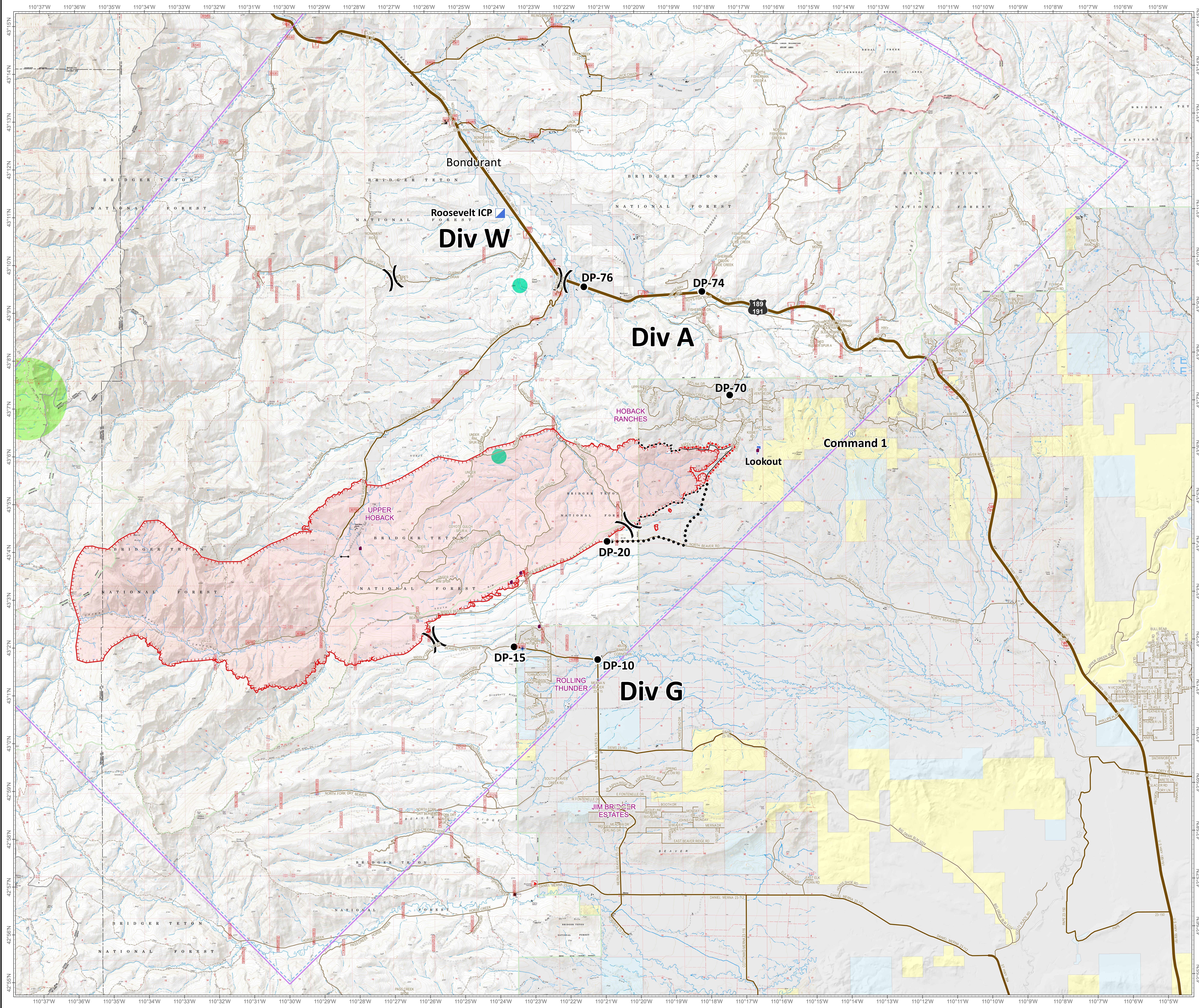



# Roosevelt Fire WY-BTF-001823 Operations and Planning Briefing Map September 19, 2018

approximately 29,162 acres  
on September 18, 2242 hr




- Division
- Drop
- Incident Command
- Value at
- Uncontrolled Fire
- Planned Secondary
- Active
- Temporary Flight Restriction
- Planned Fire
- Sage Grouse**
- Heavy Equipment and Retardant Avoidance Area
- T and E Plant - Payson's Bladderpod**
- Heavy Equipment Avoidance Area
- Land**
- Private
- Forest Service (Transparent)
- Bureau of Land Management
- US
- WY
- Local
- USFS




Great Basin  
Basin  
Team 6

**Roosevelt Maps**



bit.ly/rooseveltfire

Great Basin Team 6 GIS  
 Author: bhansen  
 Date: 20180919 1735 tv  
 File: ops-planning\_36448\_jand\_2018\_Roosevelt\_WYBTF001823\_mxd  
 Lat-Long Grid Ticks: 1' minute interval  
 Projection: NAD83 UTM Zone12



0 0.5 1 2 Miles