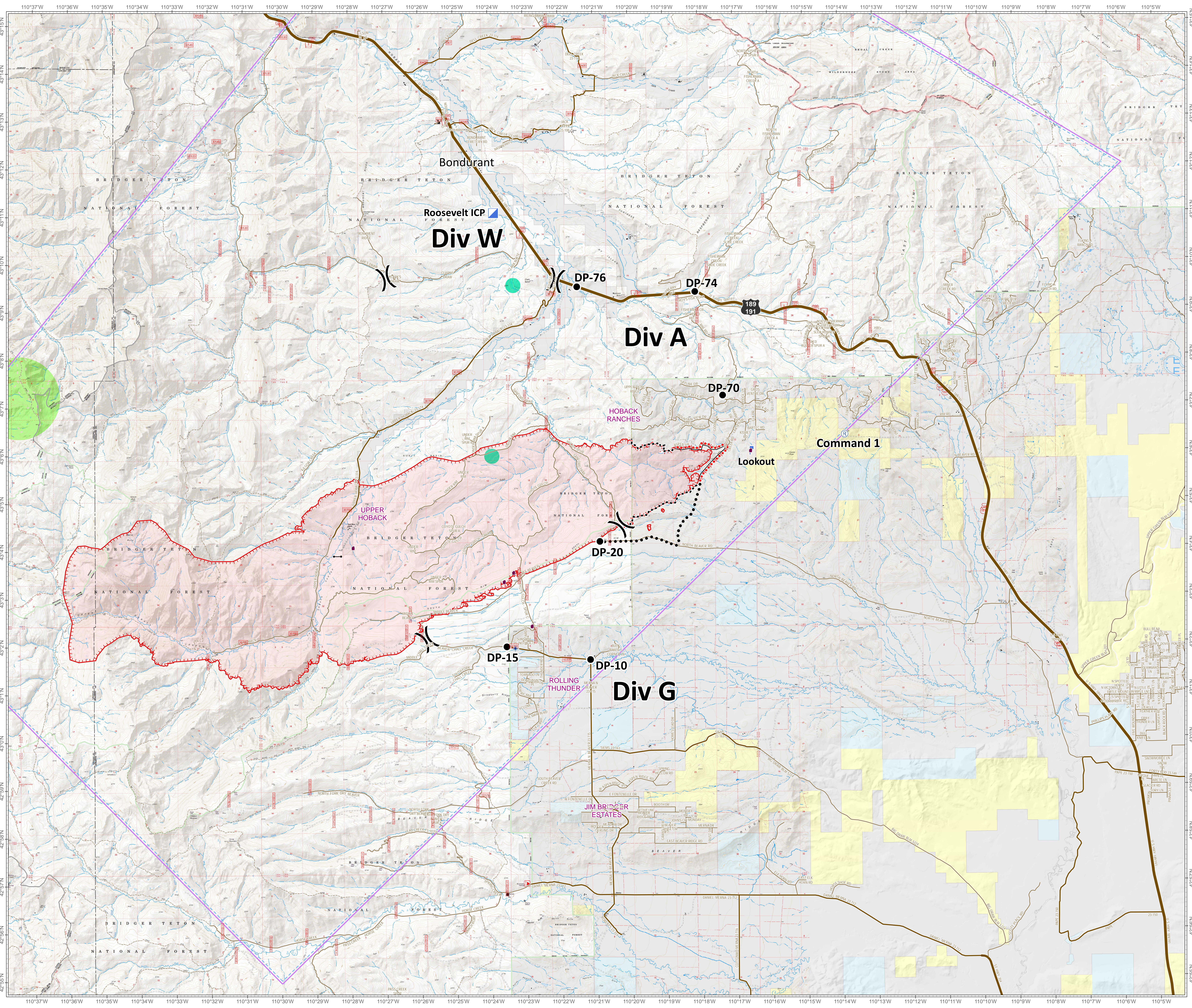


Roosevelt Fire WY-BTF-001823 Operations and Planning Briefing Map September 19, 2018

approximately 29,162 acres
on September 18, 2242 hr



- Division
- Drop
- Incident Command
- Value at
- Uncontrolled Fire
- Planned Secondary
- Active
- Temporary Flight Restriction
- Planned Fire
- Sage Grouse**
- Heavy Equipment and Retardant Avoidance Area
- T and E Plant - Payson's Bladderpod**
- Heavy Equipment Avoidance Area
- Land**
- Private
- Forest Service (Transparent)
- Bureau of Land Management

- US
- WY
- Local
- USFS



bit.ly/rooseveltfire

Great Basin Team 6 GIS
Author: bhasen
Date: 20180919 1735 hr
File: ops-planning_36448_jand_2018_Roosevelt_WYBTF001823_mxd
Lat-Long Grid Ticks: 1' minute interval
Projection: NAD83 UTM Zone12

