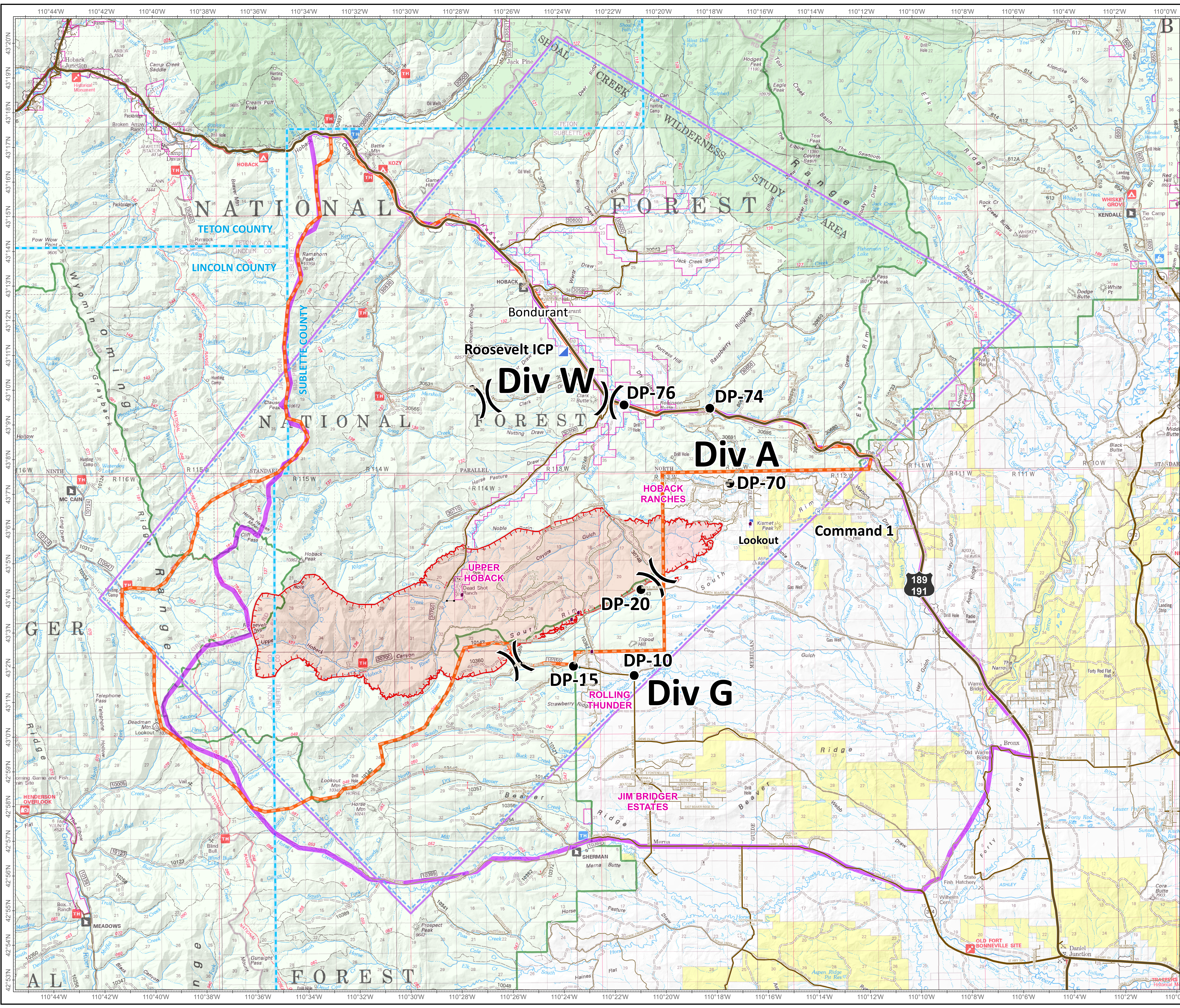



**Roosevelt Fire**  
 WY-BTF-001823  
**Situation Map**  
 September 19, 2018

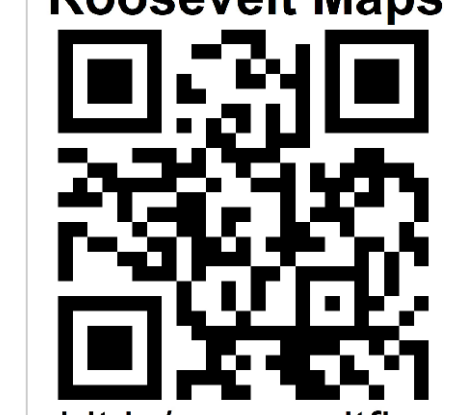
approximately 29,162 acres  
 on September 18, 2242 hr

-  Division
-  Drop
-  Incident Command
-  Value at
-  Uncontrolled Fire
-  Temporary Flight Restriction
-  Planning Area as of September 18
-  US Forest Service Closure Area as of September 18
-  Private Inholdings near USFS
-  County



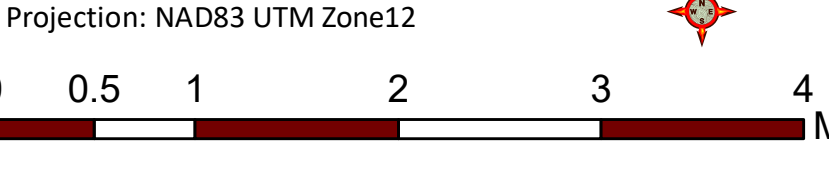


**Roosevelt Maps**



bit.ly/rooseultfire

Great Basin Team 6 GIS  
 Author: bhanzen  
 Date: 20180919 1722z  
 File: sit-planning\_30x48\_bnd\_2018\_Roosevelt\_WYBTF001823.mxd  
 Lat-Long Grid Ticks: 1 minute interval  
 Projection: NAD83 UTM Zone12



0 0.5 1 2 3 4 Miles