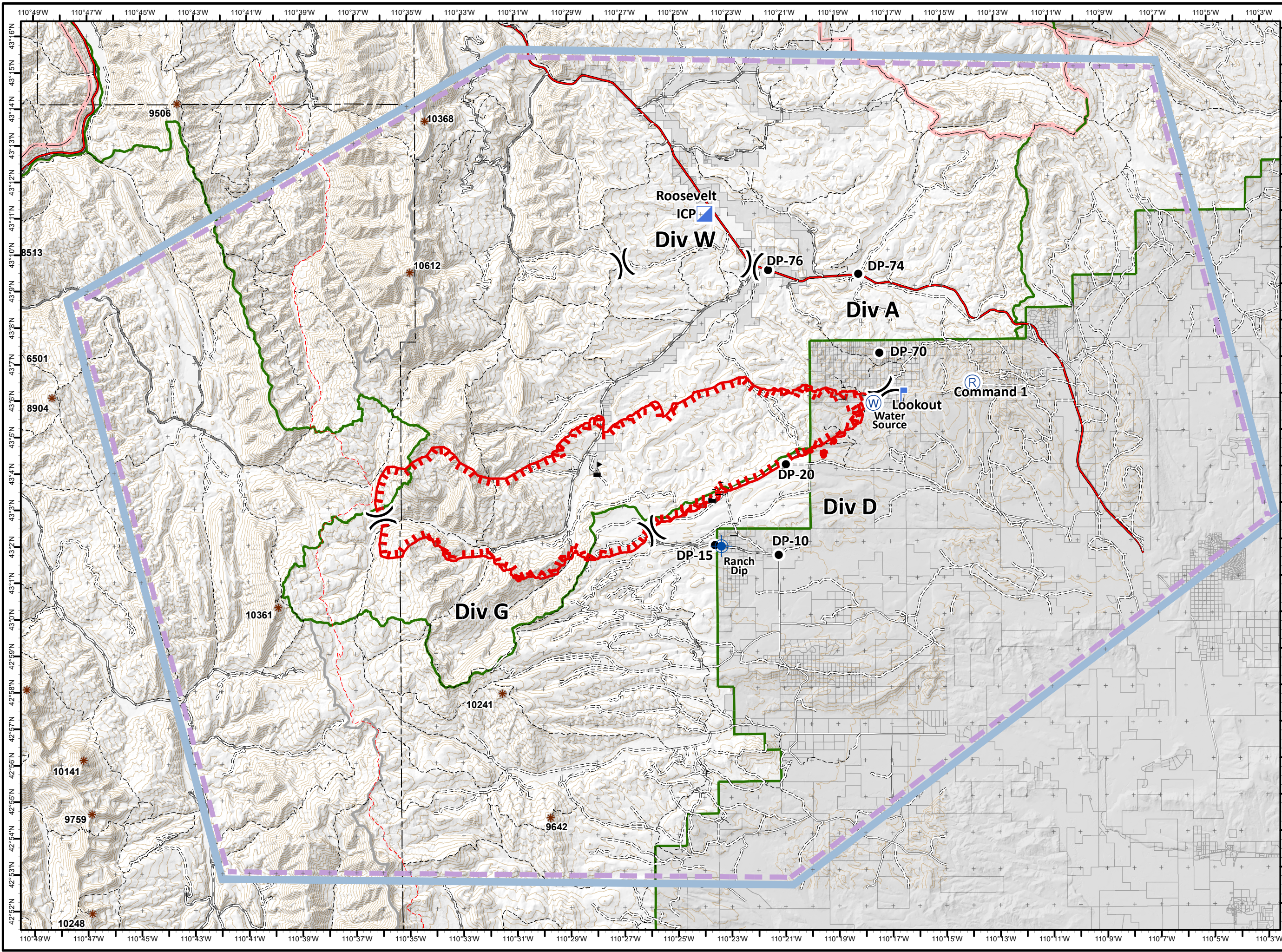
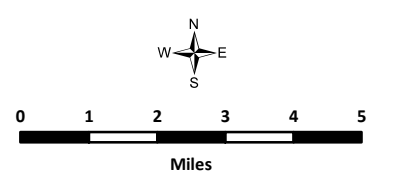


Roosevelt Fire
WY-BTF-001823
Pilot Map
 Sep 20, 2018
 29,162 IR acres
 as of 09/18/2018 2242



- Dip Site
- Drop Point
- ICP
- Lookout
- Repeater
- Water Source
- Value at Risk
- Division Break
- Uncontrolled Fire Edge
- TFR

Dip Site	
Ranch Dip	43° 1.928' N 110° 23.312' W
Drop Point	
DP-10	43° 1.686' N 110° 21.171' W
DP-15	43° 1.966' N 110° 23.552' W
DP-20	43° 4.156' N 110° 20.877' W
DP-70	43° 7.198' N 110° 17.344' W
DP-74	43° 9.370' N 110° 18.112' W
DP-76	43° 9.485' N 110° 21.484' W
Helibase	
Pinedale	42° 47.864' N 109° 48.180' W
Incident Command Post	
Roosevelt ICP	43° 11.039' N 110° 23.859' W
Lookout	
<null>	43° 6.037' N 110° 16.559' W
Repeater	
Command I	43° 6.367' N 110° 13.872' W
Water Source	
<null>	43° 5.839' N 110° 17.588' W



Roosevelt Maps
bit.ly/rooseultfire