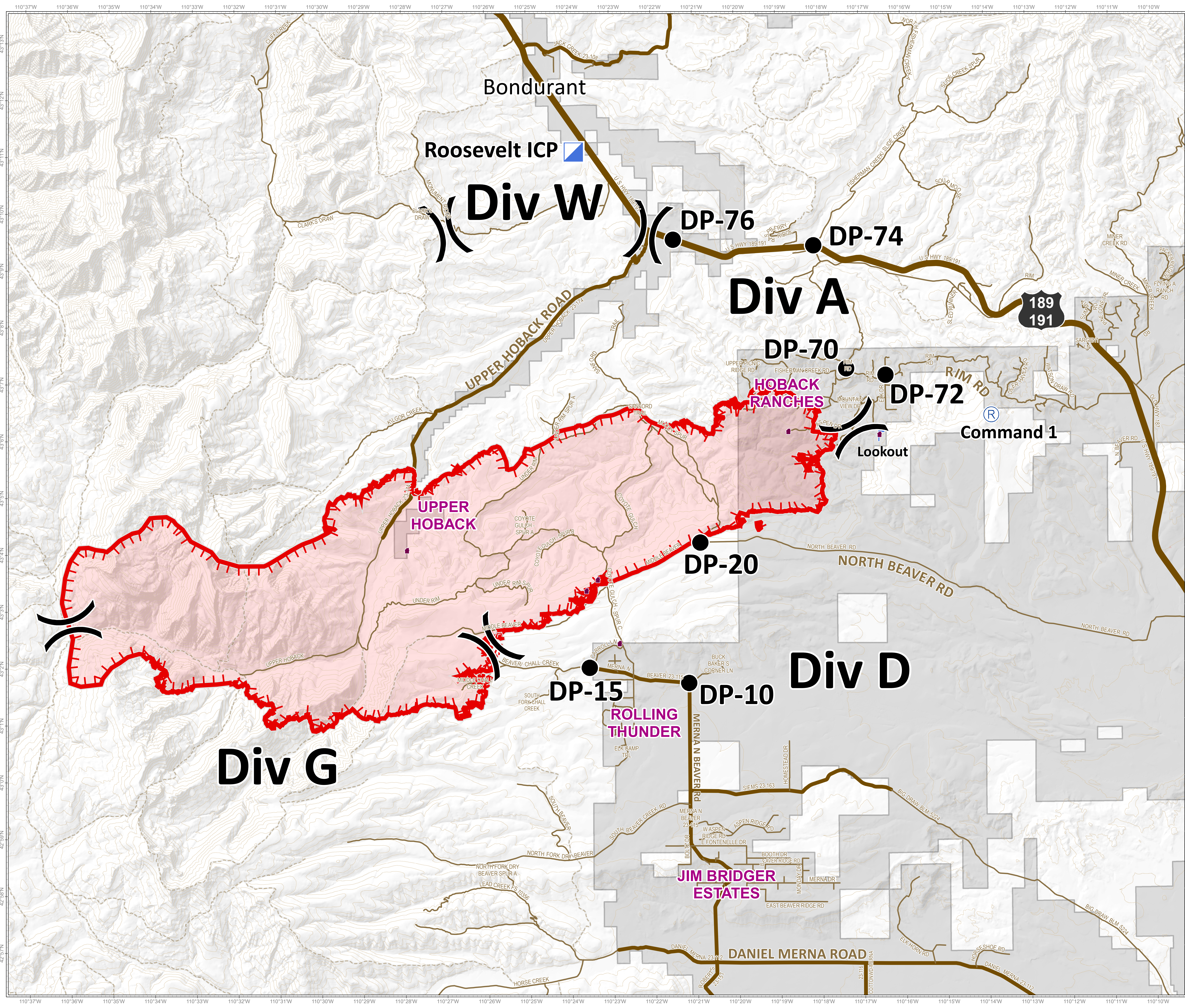


Roosevelt Fire
 WY-BTF-001823
Briefing Map
 September 20, 2018
 approximately 31,681 acres
 on September 19, 2236 hr



- Incident Command Post
- Division Break
- Drop Point
- Repeater
- Value at Risk
- Uncontrolled Fire Edge
- Private Land
- Roads**
- US Highway
- County
- Local Road
- USFS Road
- Trail

Great Basin Team 6
 Incident Management Team 6

Roosevelt Maps

bit.ly/rooseveltfire

Great Basin Team 6 GIS
 Author: bhansen
 Date: 20180920 0531 hr
 File: briefing_3648_land_2018_Roosevelt_WYBTF001823.mxd
 Projection: NAD83 UTM Zone 12

Lat-Long Grid Ticks: 1 minute interval
 Projection: NAD83 UTM Zone 12

0 0.5 1 2 Miles