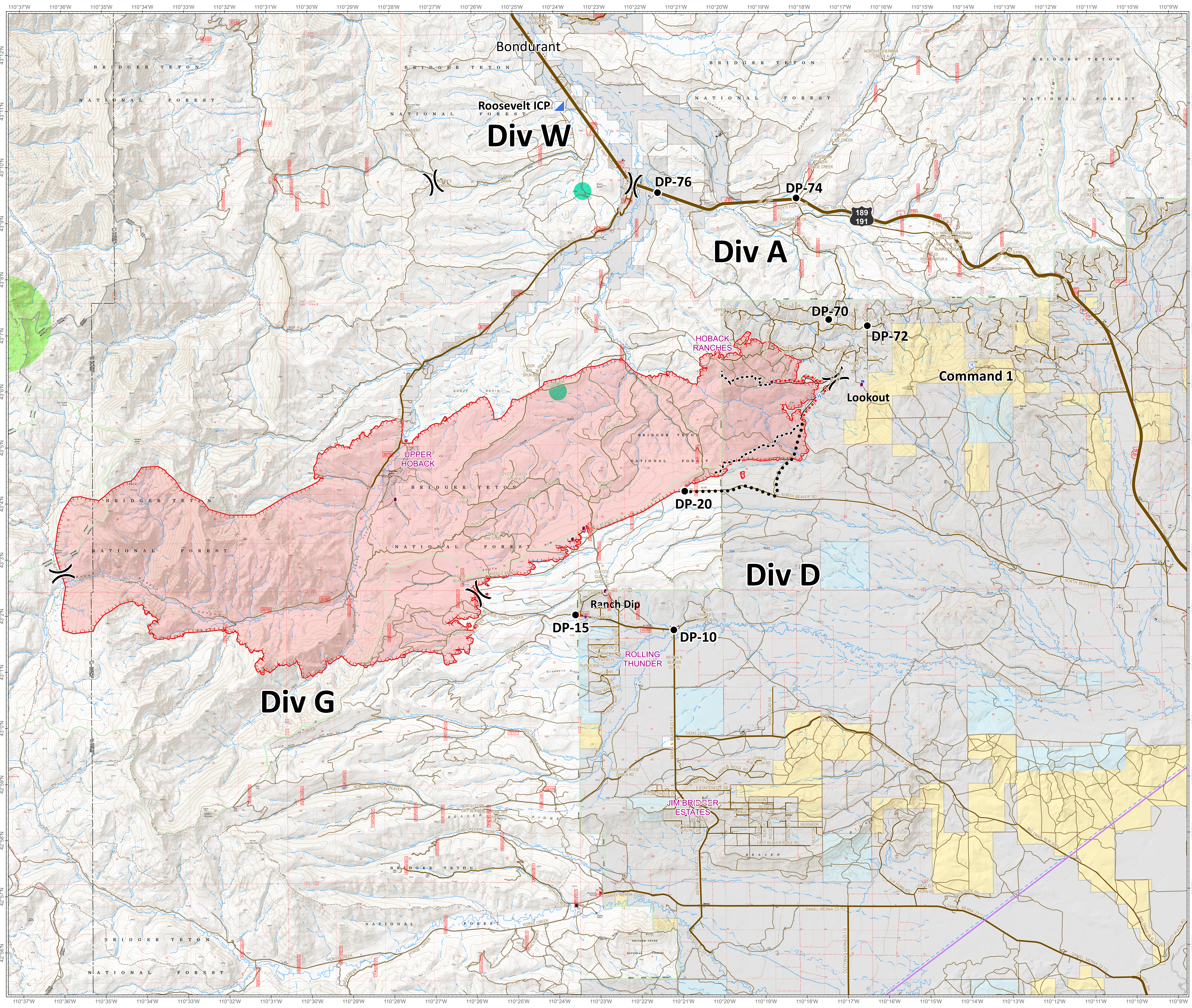


Roosevelt Fire
 WY-BTF-001823
Planning Map
 September 20, 2018

approximately 31,681 acres
 on September 19, 2236 hr

- Division
- Drop
- Incident Command
- Value at
- Uncontrolled Fire
- Planned Secondary
- Active
- Temporary Flight Restriction
- Planned Fire Line
- Sage Grouse**
- Heavy Equipment and Retardant Avoidance Area
- T and E Plant - Payson's Bladderpod**
- Heavy Equipment Avoidance Area
- Land**
- Private
- Forest Service (Transparent)
- Bureau of Land Management
- State

- US
- WY
- Local
- USFS
- Trail



Great Basin Team 6 GIS
 Author: bhansen
 Date: 20180920 0524 hr
 File: ops-planning_3648_Jand_2018_Roosevelt_WYBTF001823_mxd
 Lat-Long Grid Ticks: 1' minute interval
 Projection: NAD83 UTM Zone 12

