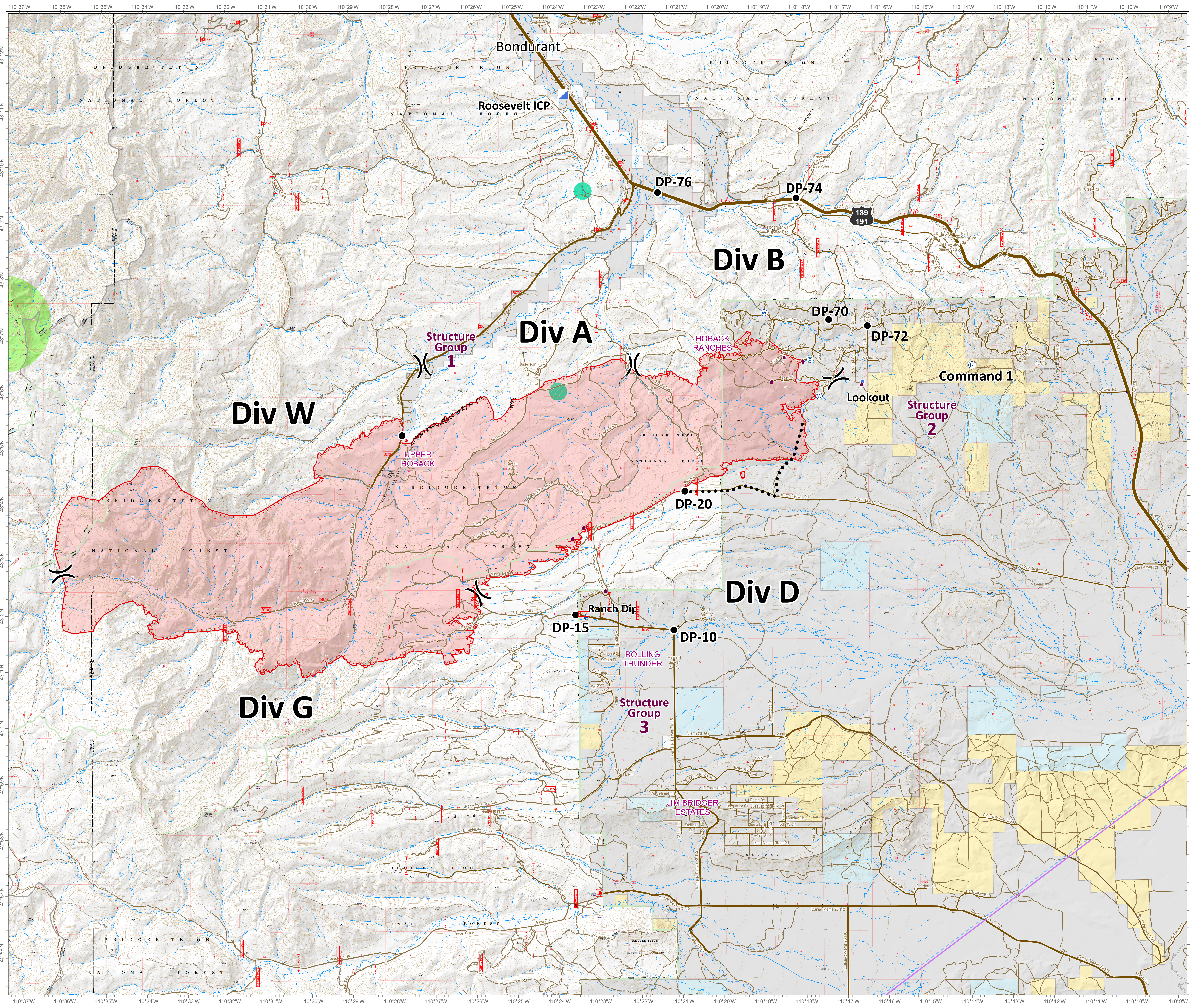




Roosevelt Fire  
WY-BTF-001823  
**Planning Map**  
September 20, 2018

approximately 31,681 acres  
on September 19, 2236 hr



- ( ) Division Break
- Drop Point
- ▣ Incident Command Post
- 👁 Lookout
- Ⓟ Pump
- Ⓡ Repeater
- ⚡ Dip Site
- 🏠 Value at Risk
- 🌊 Water Source
- 🛢 Water Tank
- Uncontrolled Fire Edge
- ⋯ Completed Dozer Line
- - - - - Planned Secondary Line
- - - - - Active Burnout
- - - - - Temporary Flight Restriction
- Sage Grouse Leaks**
- 🟢 Heavy Equipment and Retardant Avoidance Area
- 🟡 T and E Plant - Payson's Bladderpod Avoidance Area
- Land Ownership**
- Private Land
- Forest Service (Transparent)
- Bureau of Land Management
- State
- Water
- Roads**
- US Highway
- WY Highway
- County
- Local Road
- USFS Road
- Trail

  
[bit.ly/rooseveltfire](http://bit.ly/rooseveltfire)

Great Basin Team 6 GIS  
 Author: bhansen  
 Date: 20180920 1627 hr  
 File: planning\_35448\_land\_2018\_Roosevelt\_WYBTF001823.mxd  
 Lat-Long Grid Ticks: 1' minute interval  
 Projection: NAD83 UTM Zone12

0 0.5 1 2 Miles