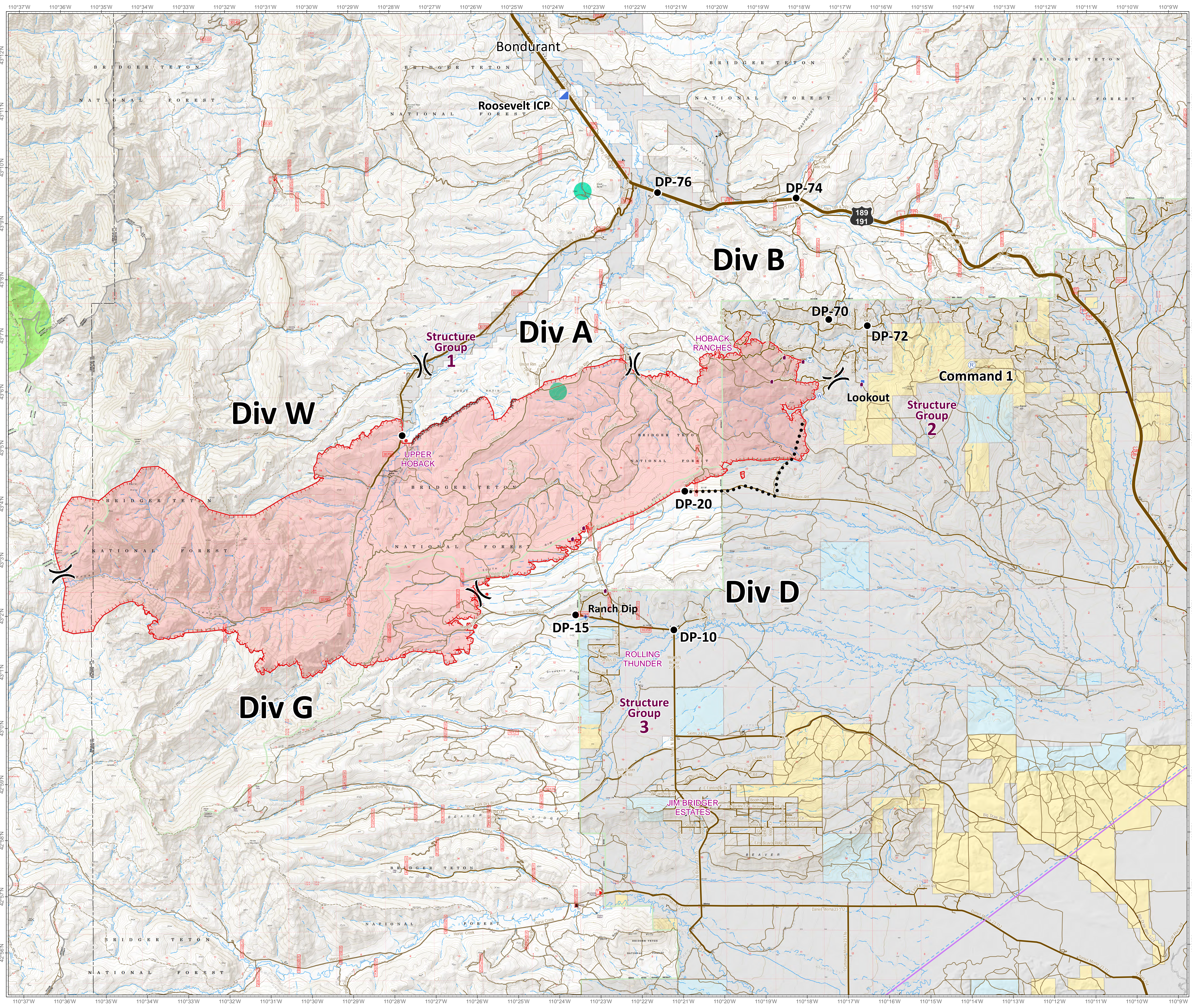


Roosevelt Fire
 WY-BTF-001823
Planning Map
 September 20, 2018

approximately 31,681 acres
 on September 19, 2236 hr



- Division Break
- Drop Point
- Incident Command Post
- Lookout
- Pump
- Repeater
- Dip Site
- Value at Risk
- Water Source
- Water Tank
- Uncontrolled Fire Edge
- Completed Dozer Line
- Planned Secondary Line
- Active Burnout
- Temporary Flight Restriction
- Sage Grouse Leaks**
- Heavy Equipment and Retardant Avoidance Area
- Avoidance Area
- T and E Plant - Payson's Bladderpod**
- Heavy Equipment Avoidance Area
- Land Ownership**
- Private Land
- Forest Service (Transparent)
- Bureau of Land Management
- State
- Water
- Roads**
- US Highway
- WY Highway
- County
- Local Road
- USFS Road
- Trail

Great Basin Team 6 GIS
 Author: bhansen
 Date: 20180920 1627 hr
 File: planning_35448_land_2018_Roosevelt_WYBTF001823.mxd
 Lat-Long Grid Ticks: 1' minute interval
 Projection: NAD83 UTM Zone12

Roosevelt Maps

bit.ly/rooseveltfire

0 0.5 1 2 Miles