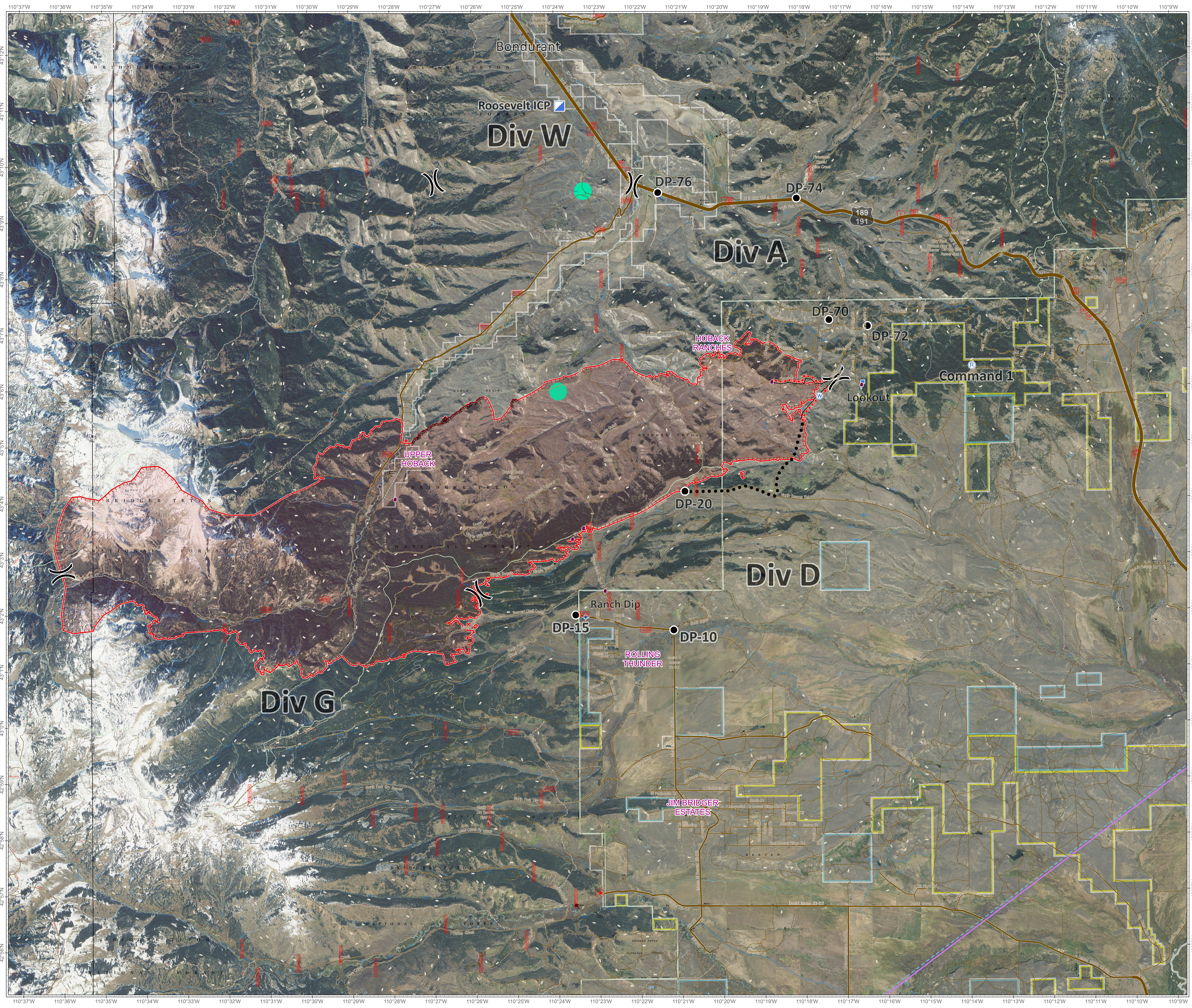


Roosevelt Fire WY-BTF-001823 Planning Imagery Map September 20, 2018

approximately 31,681 acres
on September 19, 2236 hr



- Division Break
- Drop Point
- Incident Command Post
- Repeater
- Value at Risk
- Uncontrolled Fire Edge
- Completed Dozer Line
- Active Burnout
- Planned Secondary Line
- Temporary Flight Restriction
- Sage Grouse Leaks**
- Heavy Equipment and Retardant Avoidance Area
- Land Ownership**
- Private Land (White Outline)
- Forest Service (Transparent)
- Bureau of Land Management
- State
- Roads**
- US Highway
- WY Highway
- County
- Local Road
- USFS Road
- Trail



bit.ly/rooseveltfire

Great Basin Team 6 GIS
Author: bhansen
Date: 20180920 1420 hr
File: planning_imagery_35448_land_2018_Roosevelt_WYBTF001823_1.mxd
Lat-Long Grid Ticks: 1' minute interval
Projection: NAD83 UTM Zone12

