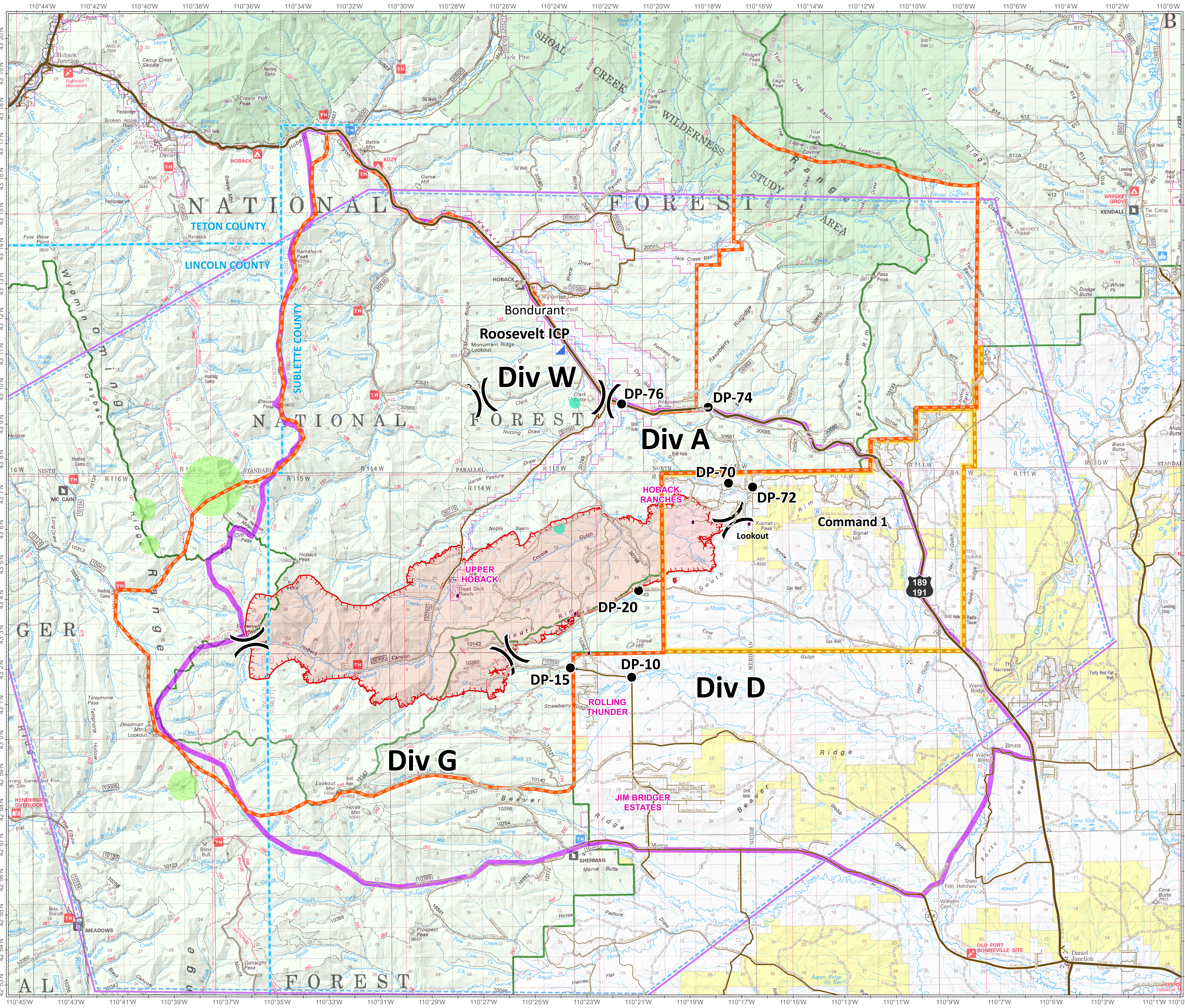


Roosevelt Fire WY-BTF-001823 Situation Map September 20, 2018

approximately 31,681 acres
on September 19, 2236 hr

- Division Break
- Drop Point
- Incident Command Post
- Repeater
- Value at Risk
- Uncontrolled Fire Edge
- Temporary Flight Restriction
- Proposed USFS Closure Area as of September 20
- Proposed BLM Closure Area as of September 20
- Planning Area as of September 18
- Private Inholdings near USFS
- County Boundary
- Sage Grouse Leaks**
- Heavy Equipment and Retardant Avoidance Area
- T and E Plant - Payson's Bladderpod**
- Heavy Equipment Avoidance Area



Great Basin Fire Management Team
TEAM 6

Roosevelt Maps
bit.ly/rooseveltfire

Great Basin Team 6 GIS
 Author: bhasen
 Date: 20180920 11:48 hr
 File: situation_3648_land_2018_Roosevelt_WYBTF001823_mxd
 Lat-Long Grid Ticks: 1 minute interval
 Projection: NAD83 UTM Zone12

0 0.5 1 2 3 4 Miles