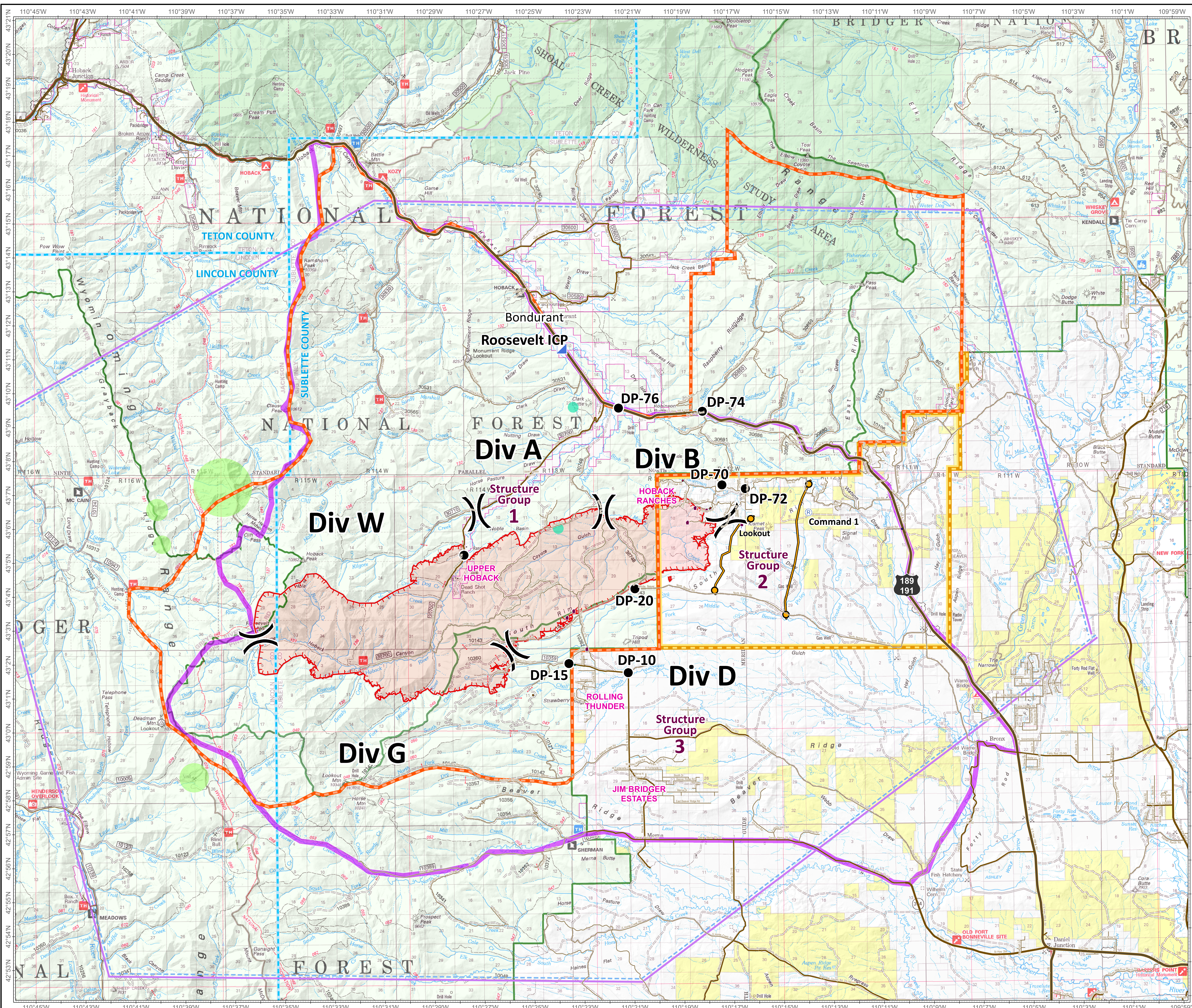


Roosevelt Fire
 WY-BTF-001823
Situation Map
 September 20, 2018

approximately 31,681 acres
 on September 19, 2236 hr

-  Division Break
-  Drop Point
-  Incident Command Post
-  Lookout
-  Repeater
-  Value at Risk
-  Uncontrolled Fire Edge
-  Temporary Flight Restriction
-  Management Action Point
-  Planning Area as of September 18
-  USFS Closure Area as of September 20
-  BLM Closure Area as of September 20
-  County Boundary
-  Private Inholdings near USFS
- Sage Grouse Leaks**
-  Heavy Equipment and Retardant Avoidance Area
- T and E Plant - Payson's Bladderpod**
-  Heavy Equipment Avoidance Area





Great Basin Team 6 GIS
 Author: bhansen
 Date: 20180920 1717 hr
 File: situation_36488_land_2018_Roosevelt_WYBTF001823_mxd
 Lat-Long Grid Ticks: 1 minute interval
 Projection: NAD83 UTM Zone12

Roosevelt Maps



bit.ly/rooseultfire



0 0.5 1 2 3 4 Miles