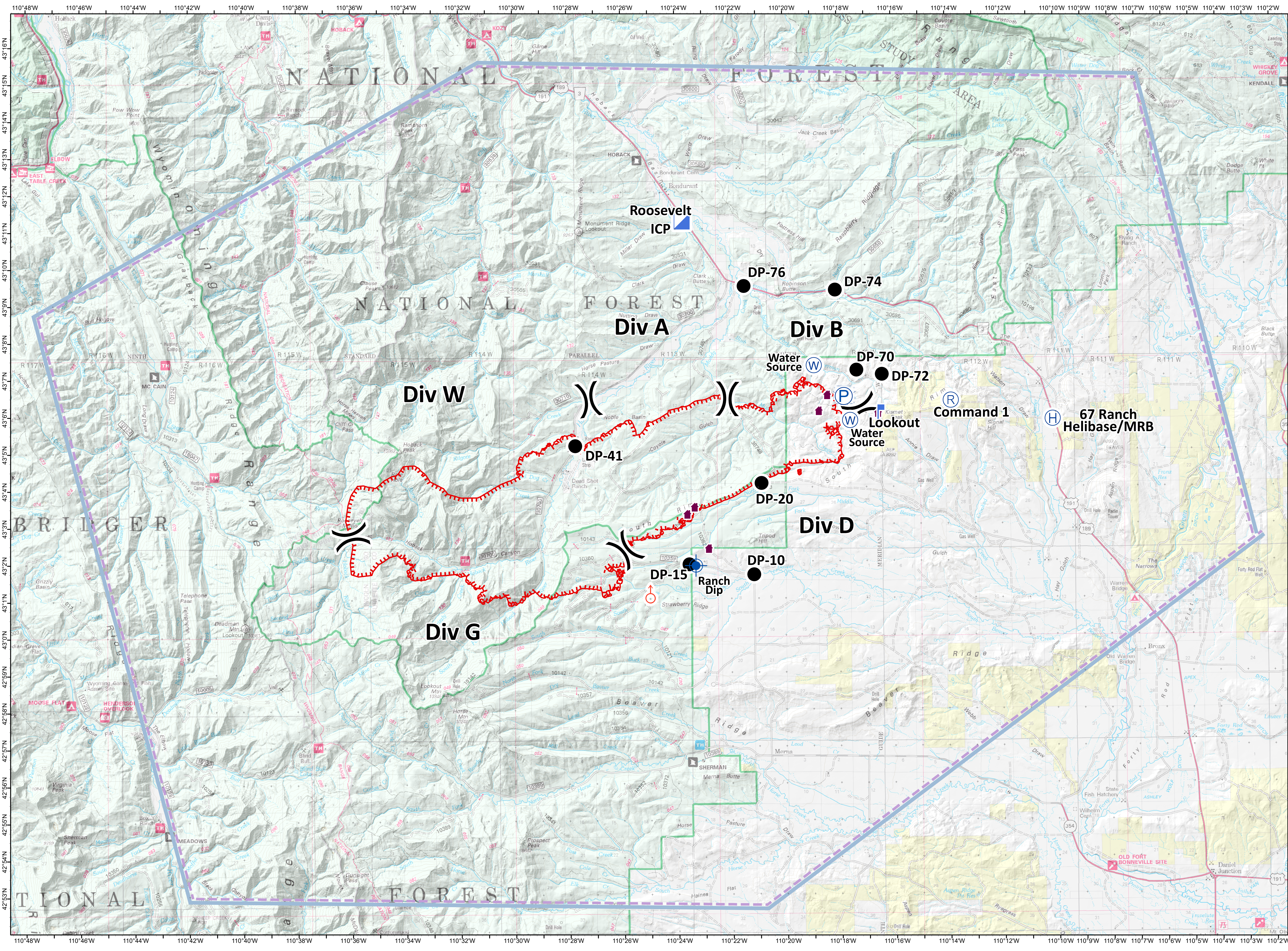


Roosevelt Fire
 WY-BTF-001823
Air Ops / Commo
 Sep 21, 2018
 31,681 acres
 as of 09/19/2018 2236



- Dip Site
- Drop Point
- Helibase
- ICP
- Lookout
- Pump
- Repeater
- Spot Fire
- Water Source
- Water Tank
- Value at Risk
- Division Break
- Uncontrolled Fire Edge
- TFR

Helibase		
67 Ranch Helibase/MRB	43° 5.850' N	110° 10.116' W
Pinedale	42° 47.864' N	109° 48.180' W
Dip Site		
Ranch Dip	43° 1.928' N	110° 23.312' W
Lookout		
<null>	43° 6.037' N	110° 16.559' W
Repeater		
Command I	43° 6.367' N	110° 13.872' W
Spot Fire		
<null>	43° 1.042' N	110° 24.998' W
Incident Command Post		
Roosevelt ICP	43° 11.244' N	110° 23.753' W

