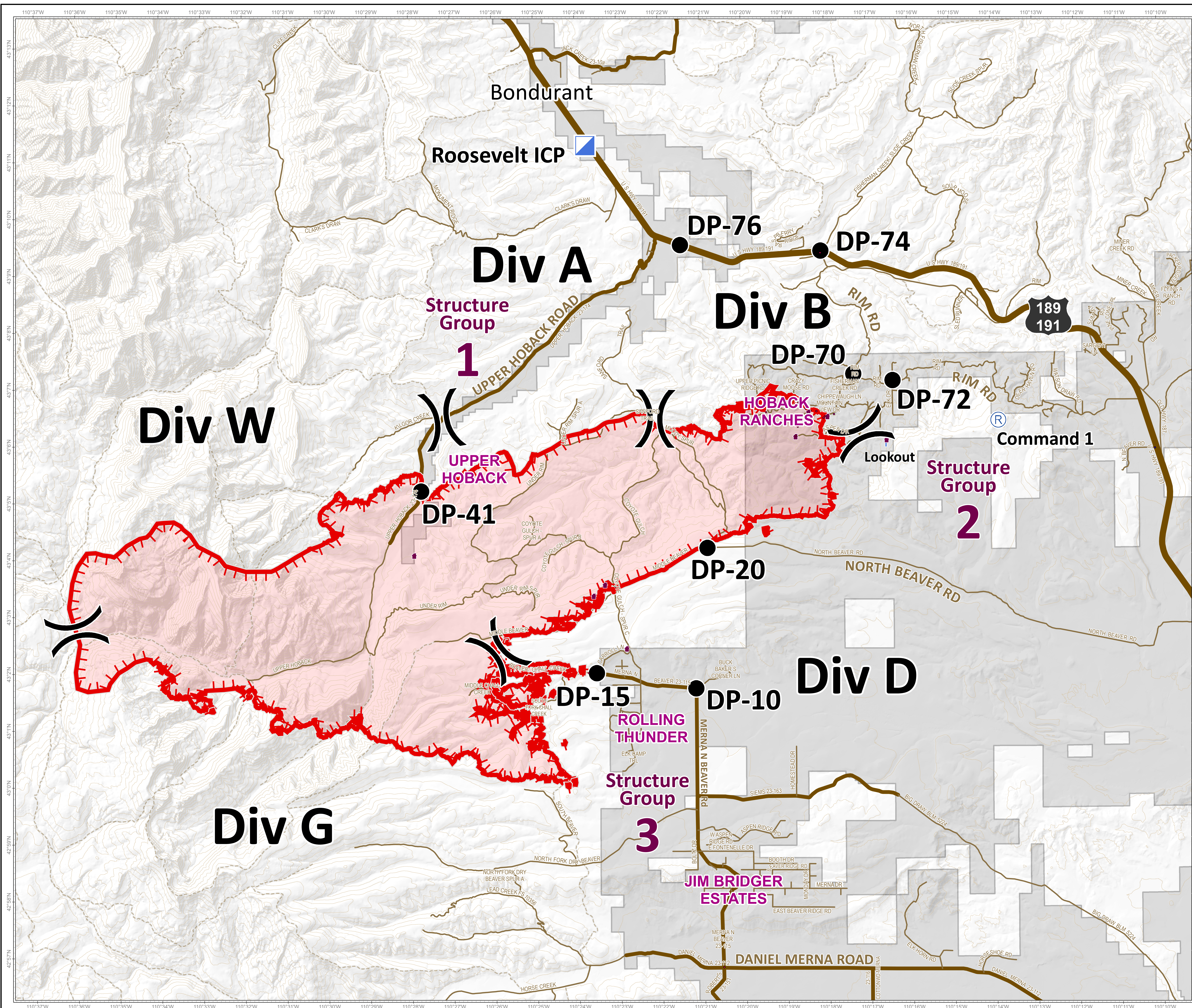




Roosevelt Fire
WY-BTF-001823
Briefing Map
September 21, 2018

approximately 34,411 acres
on September 20, 2228 hr

- Incident
- Command Post
- Division Break
- Drop Point
- Repeater
- Value at Risk
- Uncontrolled Fire Edge
- Private Land
- Roads
 - US Highway
 - County
 - Local Road
 - USFS Road
 - Trail



 **Roosevelt Maps**

bit.ly/rooseveltfire

Great Basin Team 6 GIS
Author: bhasen
Date: 20180921 0548 hr
File: briefing_3648_land_2018_Roosevelt_WYBTF001823.mxd
Lat-Long Grid Ticks: 1' minute interval
Projection: NAD83 UTM Zone12

0 0.5 1 2 Miles