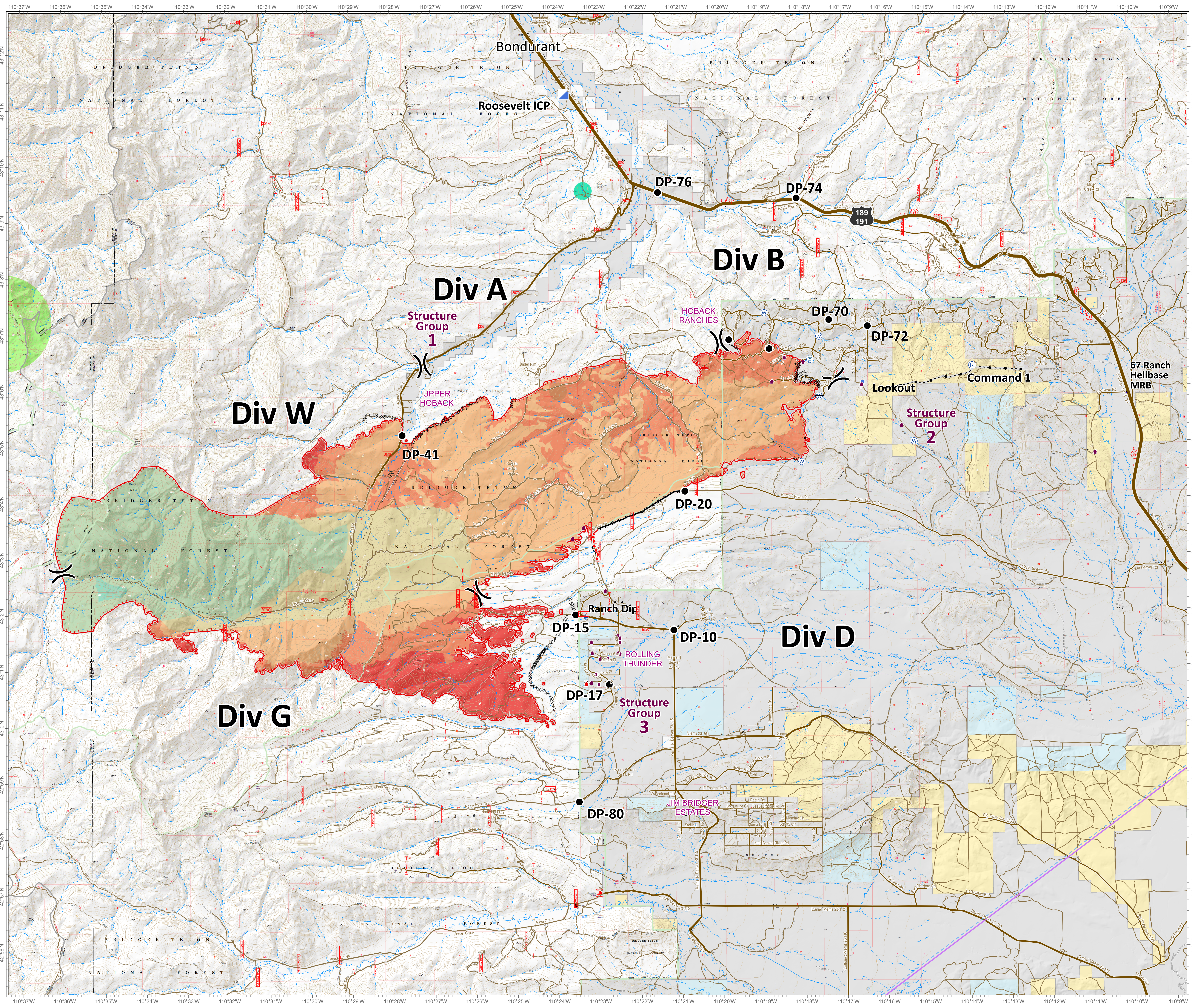


Roosevelt Fire WY-BTF-001823 Planning Progression Map September 21, 2018

approximately 34,411 acres
on September 20, 2228 hr



Progression 0916 to 0920

- 20180916
- 20180916_2
- 20180916_3
- 20180917
- 20180918
- 20180919

- Fire Location
- Division Break
- Drop Point
- Incident Command Post
- Lookout
- Pump
- Repeater
- Dip Site
- Value at Risk
- Water Source
- Water Tank
- Completed Line
- Road as Completed Line
- Uncontrolled Fire Edge
- Completed Dozer Line
- Active Burnout
- Temporary Flight Restriction
- Fuel Break

Sage Grouse Leaks

- Heavy Equipment and Retardant Avoidance Area

T and E Plant - Payson's Bladderpod

- Heavy Equipment Avoidance Area

Land Ownership

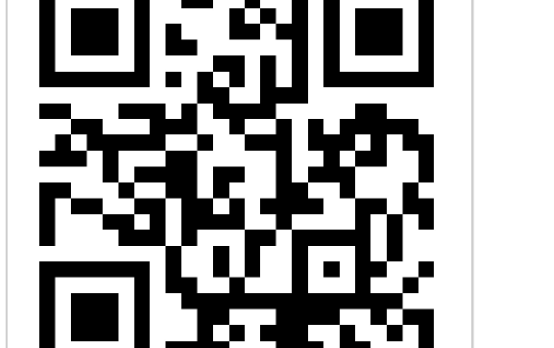
- Private Land
- Forest Service (Transparent)
- Bureau of Land Management
- State
- Water

Roads

- US Highway
- WY Highway
- County
- Local Road
- USFS Road
- Trail



Roosevelt Maps



bit.ly/rooseveltfire

Great Basin Team 6 GIS
Author: bhansen
Date: 20180921 2107 hr
File: plan_prog_2018_0921_2018_Roosevelt_WYBTF001823_bhansen1.mxd

Lat-Long Grid Ticks: 1' minute interval
Projection: NAD83 UTM Zone12

