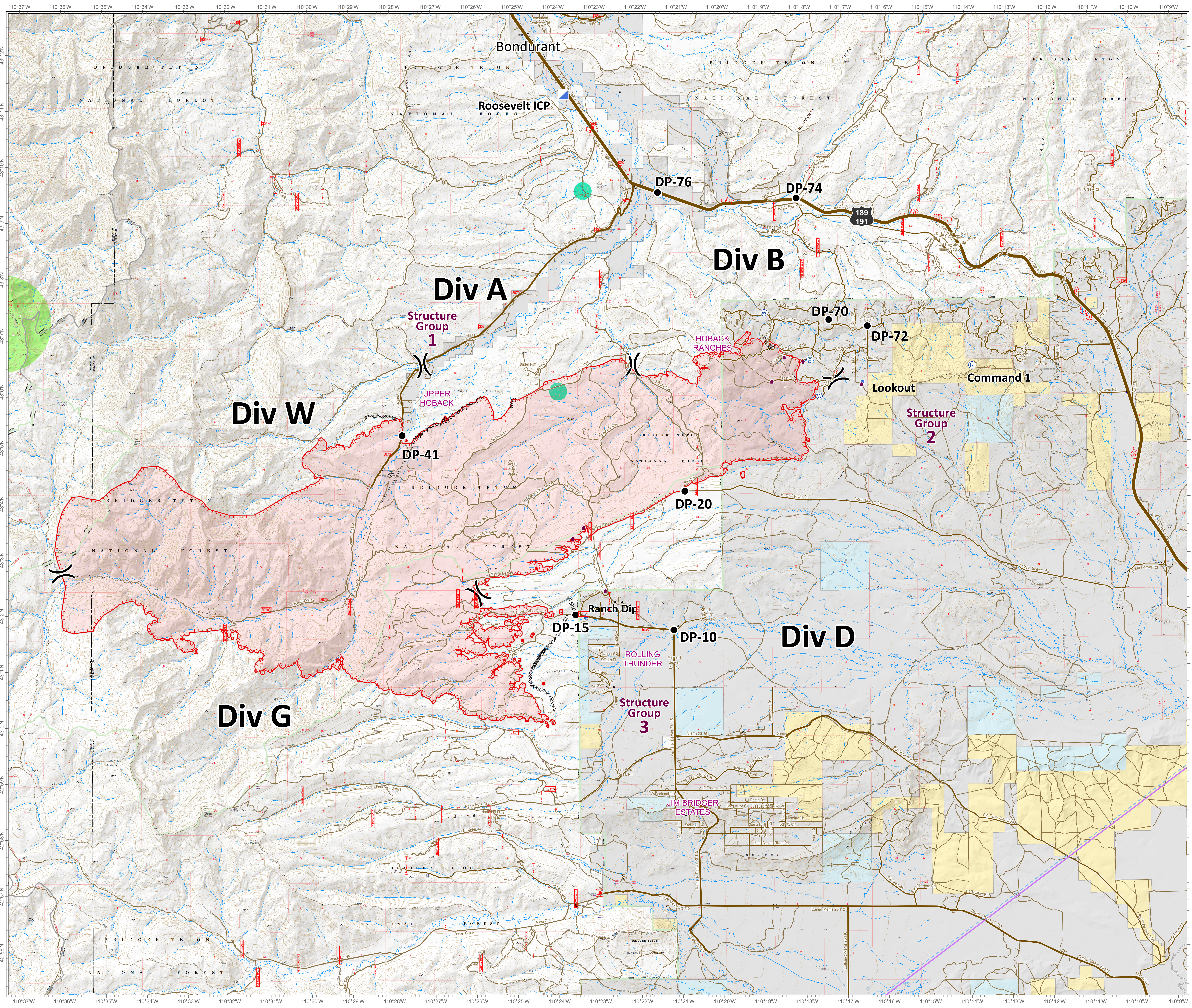


Roosevelt Fire
WY-BTF-001823
Planning Map
September 21, 2018

approximately 34,411 acres
on September 20, 2228 hr



- () Division Break
- Drop Point
- ▣ Incident Command Post
- 👁 Lookout
- Ⓟ Pump
- Ⓡ Repeater
- ⚡ Dip Site
- 🏠 Value at Risk
- 🌊 Water Source
- 🛢 Water Tank
- 🔴 Uncontrolled Fire Edge
- ⋯ Completed Dozer Line
- ⋯ Active Burnout
- ⋯ Temporary Flight Restriction
- Sage Grouse Leaks**
- 🟢 Heavy Equipment and Retardant Avoidance Area
- T and E Plant - Payson's Bladderpod**
- 🟡 Heavy Equipment Avoidance Area
- Land Ownership**
- Private Land
- Forest Service (Transparent)
- Bureau of Land Management
- State
- Water
- Roads**
- ▬ US Highway
- ▬ WY Highway
- ▬ County
- ▬ Local Road
- ▬ USFS Road
- ▬ Trail



Roosevelt Maps
bit.ly/rooseveltfire

Great Basin Team 6 GIS
Author: bhansen
Date: 20180921 0527 hr
File: planning_35448_land_2018_Roosevelt_WYBTF001823_mxd
Lat-Long Grid Ticks: 1' minute interval
Projection: NAD83 UTM Zone12

0 0.5 1 2 Miles