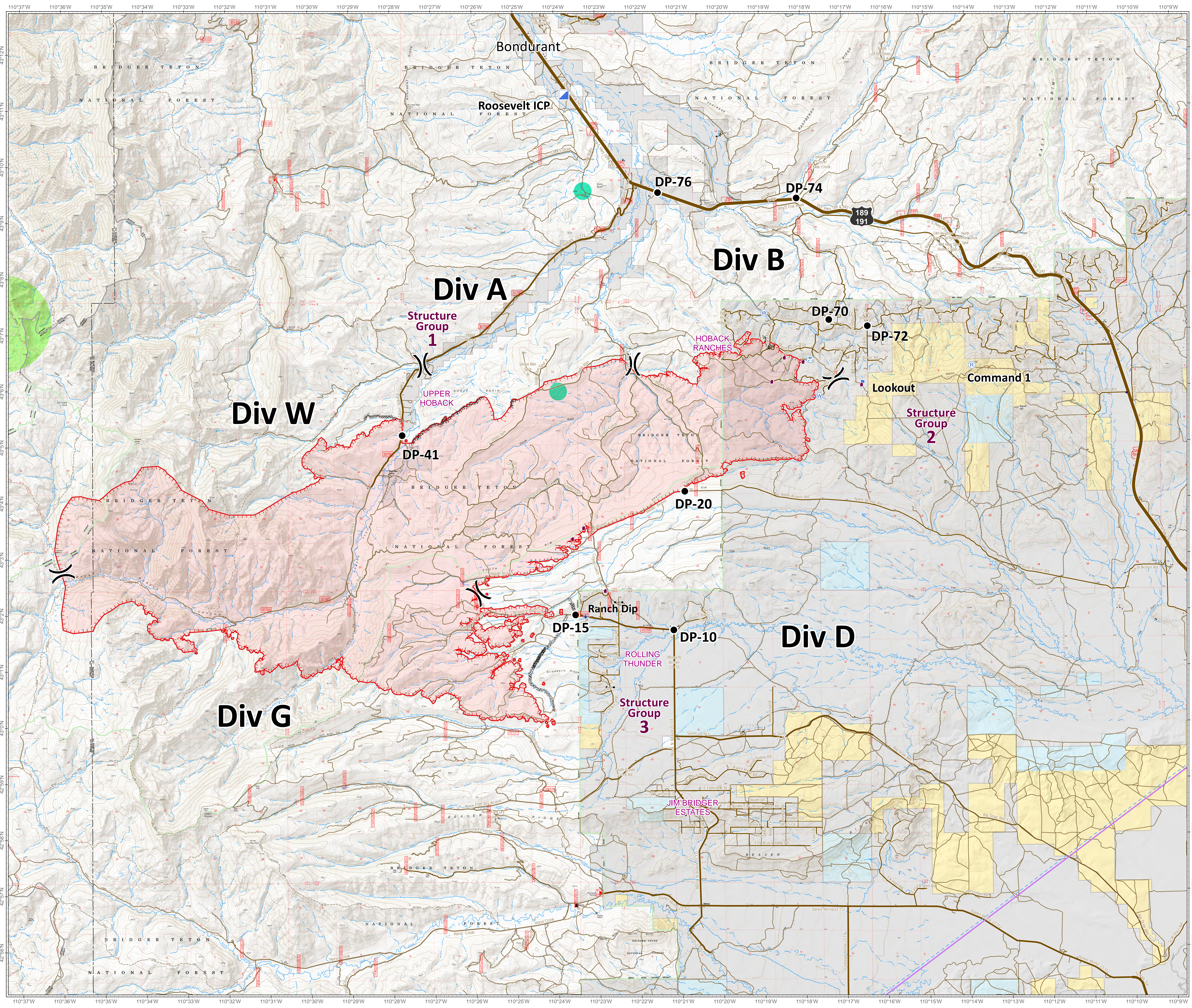



Roosevelt Fire
 WY-BTF-001823
Planning Map
 September 21, 2018

approximately 34,411 acres
 on September 20, 2228 hr




- () Division Break
- Drop Point
- ▣ Incident Command Post
- 👁 Lookout
- Ⓟ Pump
- Ⓡ Repeater
- ⚡ Dip Site
- 🏠 Value at Risk
- 🌊 Water Source
- 🛢 Water Tank
- Uncontrolled Fire Edge
- Completed Dozer Line
- Active Burnout
- Temporary Flight Restriction
- Sage Grouse Leaks**
- 🟢 Heavy Equipment and Retardant Avoidance Area
- T and E Plant - Payson's Bladderpod**
- 🟡 Heavy Equipment Avoidance Area
- Land Ownership**
- Private Land
- Forest Service (Transparent)
- Bureau of Land Management
- State
- Water
- Roads**
- US Highway
- WY Highway
- County
- Local Road
- USFS Road
- Trail



Great Basin Team 6 GIS
 Author: bhansen
 Date: 20180921 0527 hr
 File: planning_35648_land_2018_Roosevelt_WYBTF001823.mxd
 Lat-Long Grid Ticks: 1' minute interval
 Projection: NAD83 UTM Zone12

Roosevelt Maps



bit.ly/rooseveltfire

