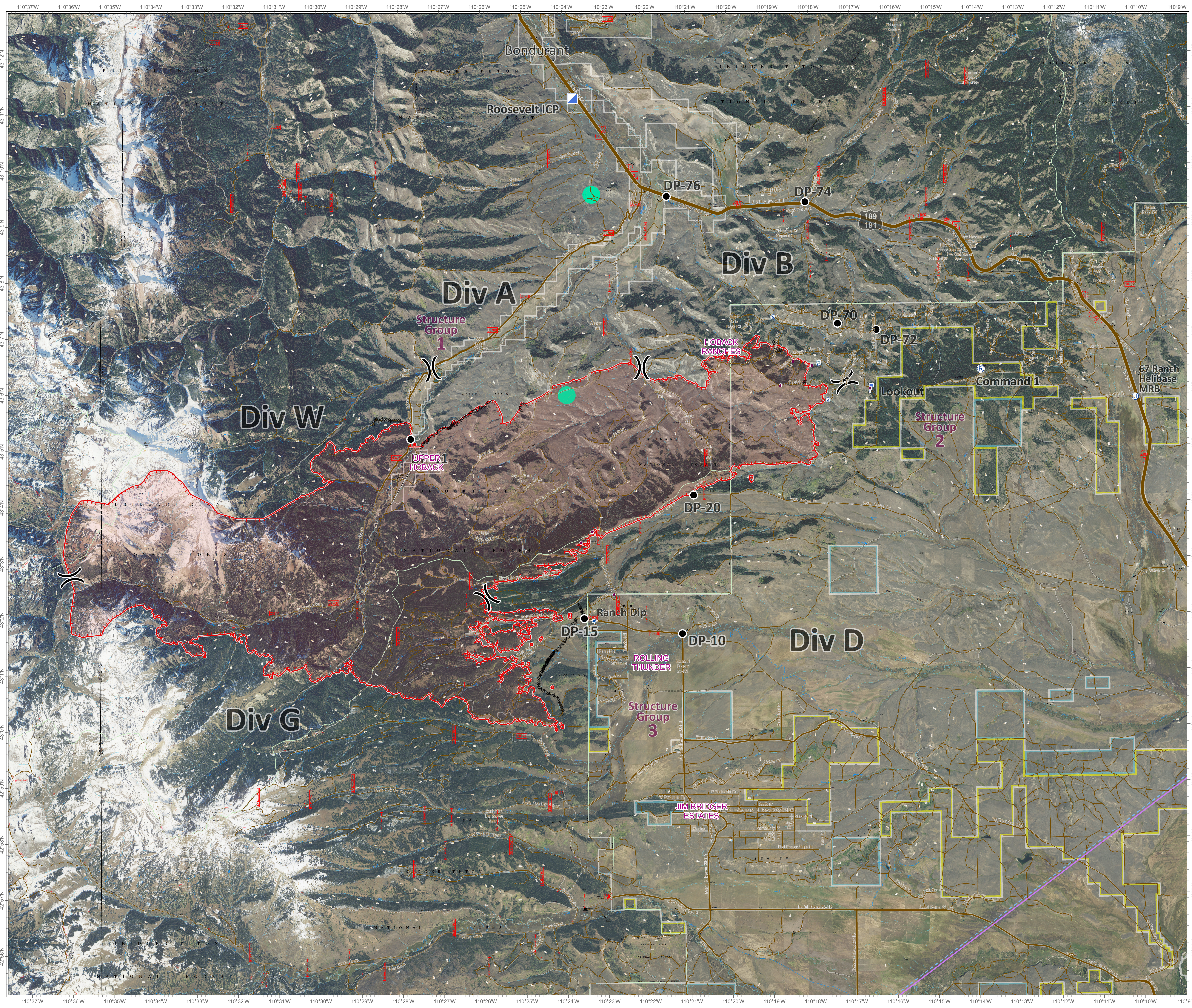



Roosevelt Fire
WY-BTF-001823
**Planning
Imagery Map**
September 21, 2018

approximately 34,411 acres
on September 20, 2228 hr




- Division Break
- Drop Point
- Incident Command Post
- Repeater
- Value at Risk
- Uncontrolled Fire Edge
- Completed Dozer Line
- Active Burnout
- Temporary Flight Restriction
- Sage Grouse Leaks**
- Heavy Equipment and Retardant Avoidance Area
- Land Ownership**
- Private Land (White Outline)
- Forest Service (Transparent)
- Bureau of Land Management
- State
- Roads**
- US Highway
- WY Highway
- County
- Local Road
- USFS Road
- Trail



Great Basin Team 6 GIS
Author: bhansen
Date: 20180921 1035 hr
File: planning_imagery_35448_land_2018_Roosevelt_WYBTF001823_1.mxd
Projection: NAD83 UTM Zone12

Roosevelt Maps



bit.ly/rooseveltfire

Lat-Long Grid Ticks: 1' minute interval

