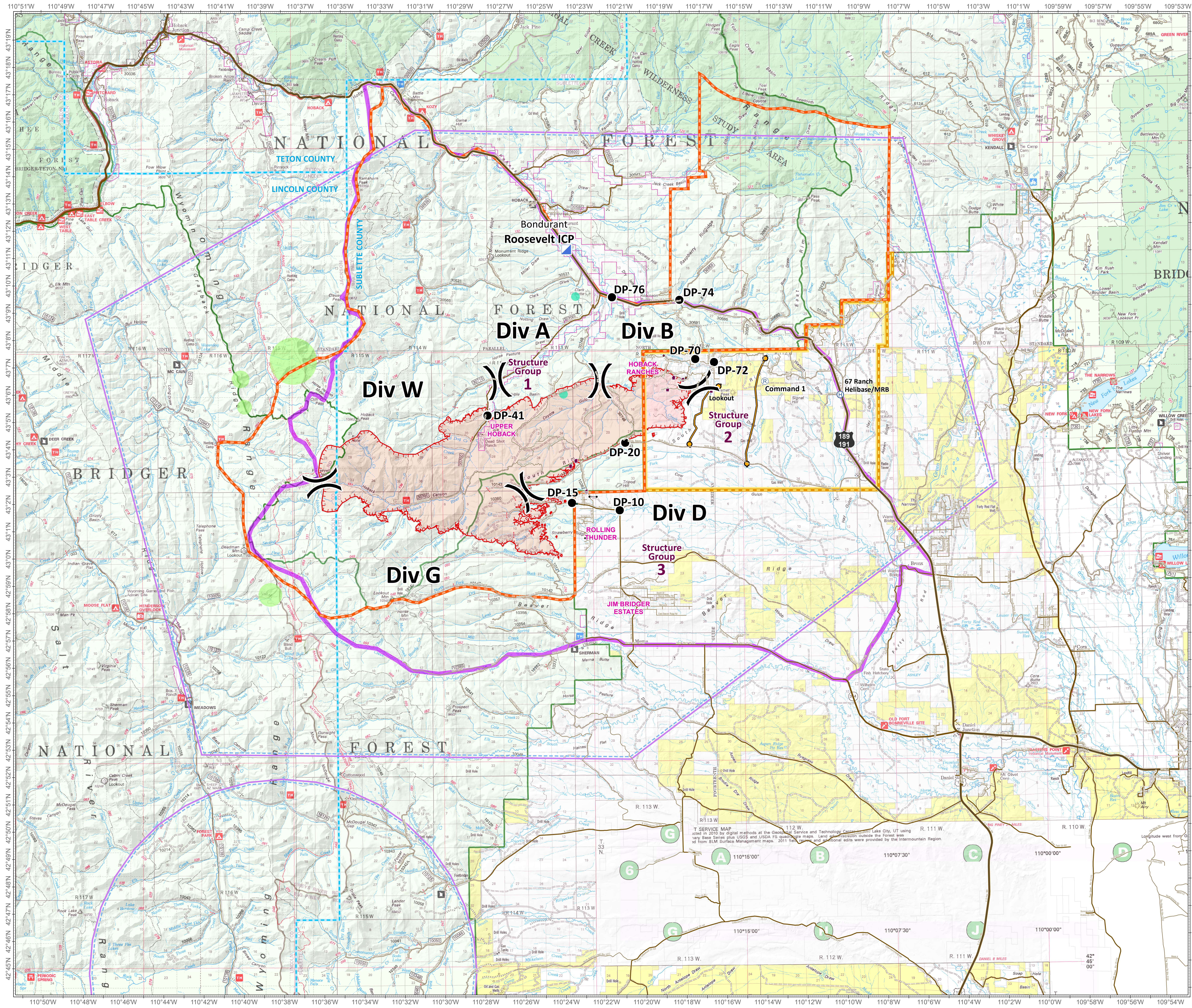



Roosevelt Fire WY-BTF-001823 Situation Map September 21, 2018

approximately 31,681 acres
on September 19, 2236 hr


- Division Break
- Drop Point
- Incident Command Post
- Lookout
- Repeater
- Value at Risk
- Uncontrolled Fire Edge
- Temporary Flight Restriction
- Management Action Point
- Planning Area as of September 18
- USFS Closure Area as of September 20
- BLM Closure Area as of September 20
- County Boundary
- Forest Ranger District Boundary
- Private Inholdings near USFS
- Sage Grouse Leaks**
- Heavy Equipment and Retardant Avoidance Area
- T and E Plant - Payson's Bladderpod**
- Heavy Equipment Avoidance Area



T SERVICE MAP
dated in 2010 by digital methods at the Geographic Service and Technology Center, Lake City, UT using
vary Base Series plus USGS and USDA F0 quadrangle maps. Large gaps in data outside the Forest was
filled from BLM Surface Management maps. 2011 field notes and seasonal edits were provided by the Intermountain Region.

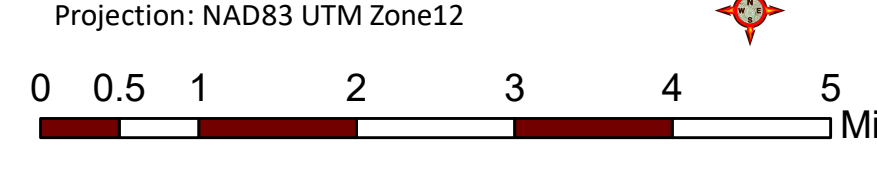


Roosevelt Maps



bit.ly/rooseultfire

Great Basin Team 6 GIS
 Author: bhasen
 Date: 20180921 1602 hr
 File: situation_201809_21_18_Roosevelt_WYBTF001823_mxd
 Lat-Long Grid Ticks: 1 minute Interval
 Projection: NAD83 UTM Zone12



0 0.5 1 2 3 4 5 Miles