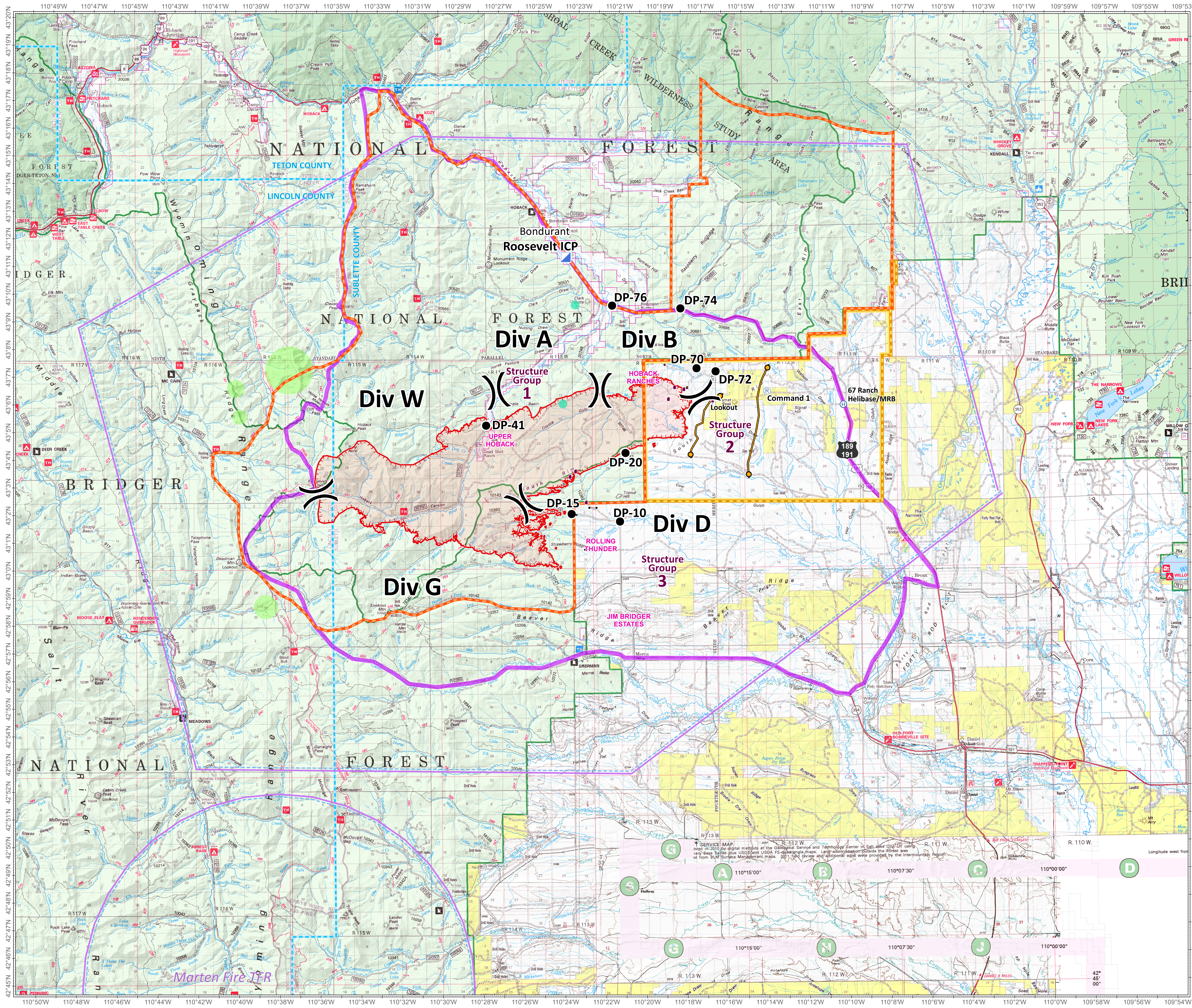


Roosevelt Fire WY-BTF-001823 Situation Map September 21, 2018

approximately 34,411 acres
on September 20, 2228 hr

- Division Break
- Drop Point
- Incident Command Post
- Lookout
- Repeater
- Value at Risk
- Uncontrolled Fire Edge
- Temporary Flight Restriction
- Management Action Point
- Planning Area as of September 18
- USFS Closure Area as of September 20
- BLM Closure Area as of September 20
- County Boundary
- Forest Ranger District Boundary
- Private Inholdings near USFS
- Sage Grouse Leaks**
- Heavy Equipment and Retardant Avoidance Area
- T and E Plant - Payson's Bladderpod**
- Heavy Equipment Avoidance Area



SERVICE MAP used in 2010 by digital methods at the Geospatial Service and Technology Center in Salt Lake City, Utah. The map was created using the National Geographic Society's Topographic Data Explorer (TDX) software. Length measurements outside the forest were taken from BLM Surface Management maps. 2011 field review and additional edge work provided by the intermountain region.

Great Basin Fire Management Team
TEAM 6

Roosevelt Maps

bit.ly/rooseveltfire

Great Basin Team 6 GIS
Author: bhanan
Date: 20180921 17:27
File: situation_2018_09_21_1823_mxd
Lat-Long Grid Ticks: 1 minute interval
Projection: NAD83 UTM Zone12