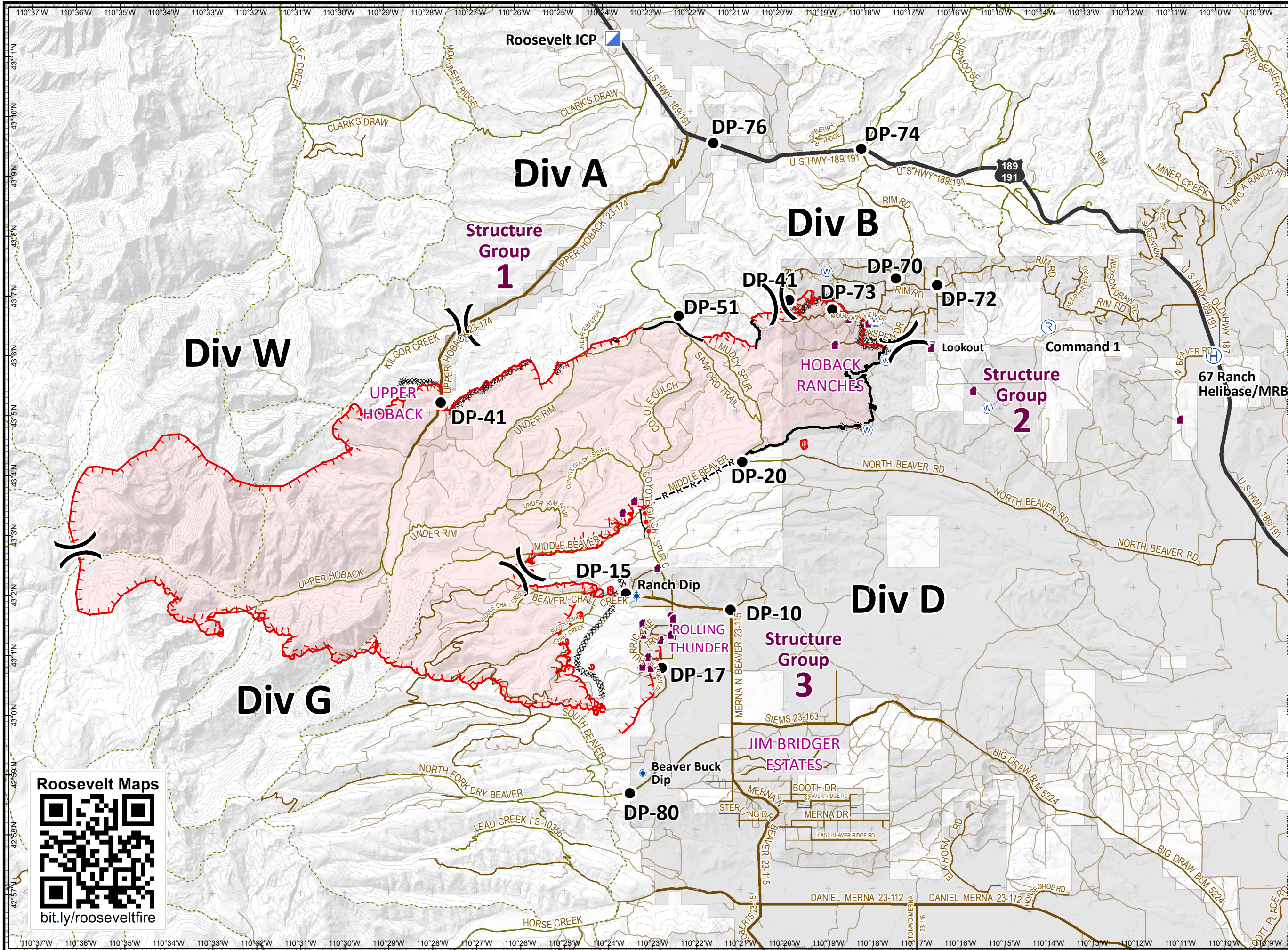


Roosevelt Fire WY-BTF-001823 IAP Overview Map September 22, 2018

appx. 34,795 acres on
September 21, 1900 hr



- Incident Command Post
- Division Break
- Drop Point
- Helibase
- Repeater
- Lookout
- Value at Risk
- Water Source
- Dip Site
- Water Tank
- Uncontrolled Fire Edge
- Completed Line
- Completed Dozer Line
- Completed Hand Line
- Road as Completed Line
- Active Burnout
- Private Land
- Roads**
- US Highway
- County
- USFS
- Local Road
- Trail

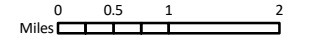
Roosevelt Maps



bit.ly/rooseveltfire



Great Basin Team 6 GIS
Author: bhansen
Date: 20180921 2229 hr
File: IAP_overview_11x17_land_2018_Roosevelt_WYBTF001823_bhansen.mxd



Projection: NAD83 UTM Zone 12
Lat-Long Grid Ticks: 1' minute interval