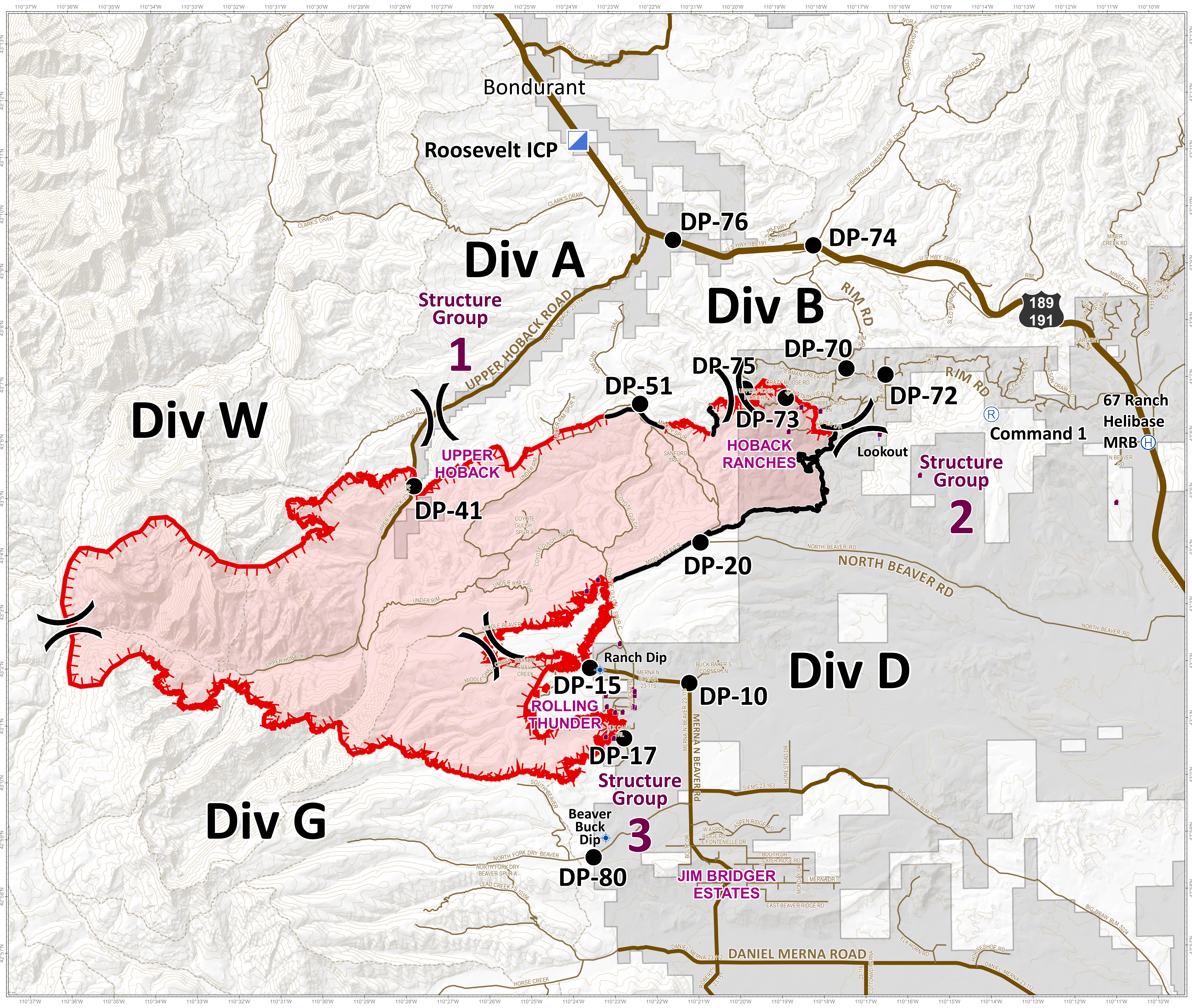


Roosevelt Fire
 WY-BTF-001823
Briefing Map
 September 22, 2018

approximately 36,602 acres
 on September 21, 2210 hr



- () Division Break
- Incident Command Post
- ⊕ Helibase
- Drop Point
- ⊕ Dip Site
- Ⓡ Repeater
- Value at Risk
- Uncontrolled Fire Edge
- Completed Line
- ▭ Private Land
- Roads**
- US Highway
- County
- Local Road
- USFS Road
- - - Trail

Roosevelt Maps

bit.ly/rooseveltfire

Great Basin
 BASIN
 MANAGEMENT TEAM
 TEAM 6

Great Basin Team © GIS
 Author: bhansen
 Date: 20180922 0637 hr
 File: briefing_36602_land_2018_Roosevelt_WYBTF001823_bhansen.mxd
 Projection: NAD83 UTM Zone 12

Lat-Long Grid Ticks: 1' minute interval
 Projection: NAD83 UTM Zone 12

0 0.5 1 2 Miles