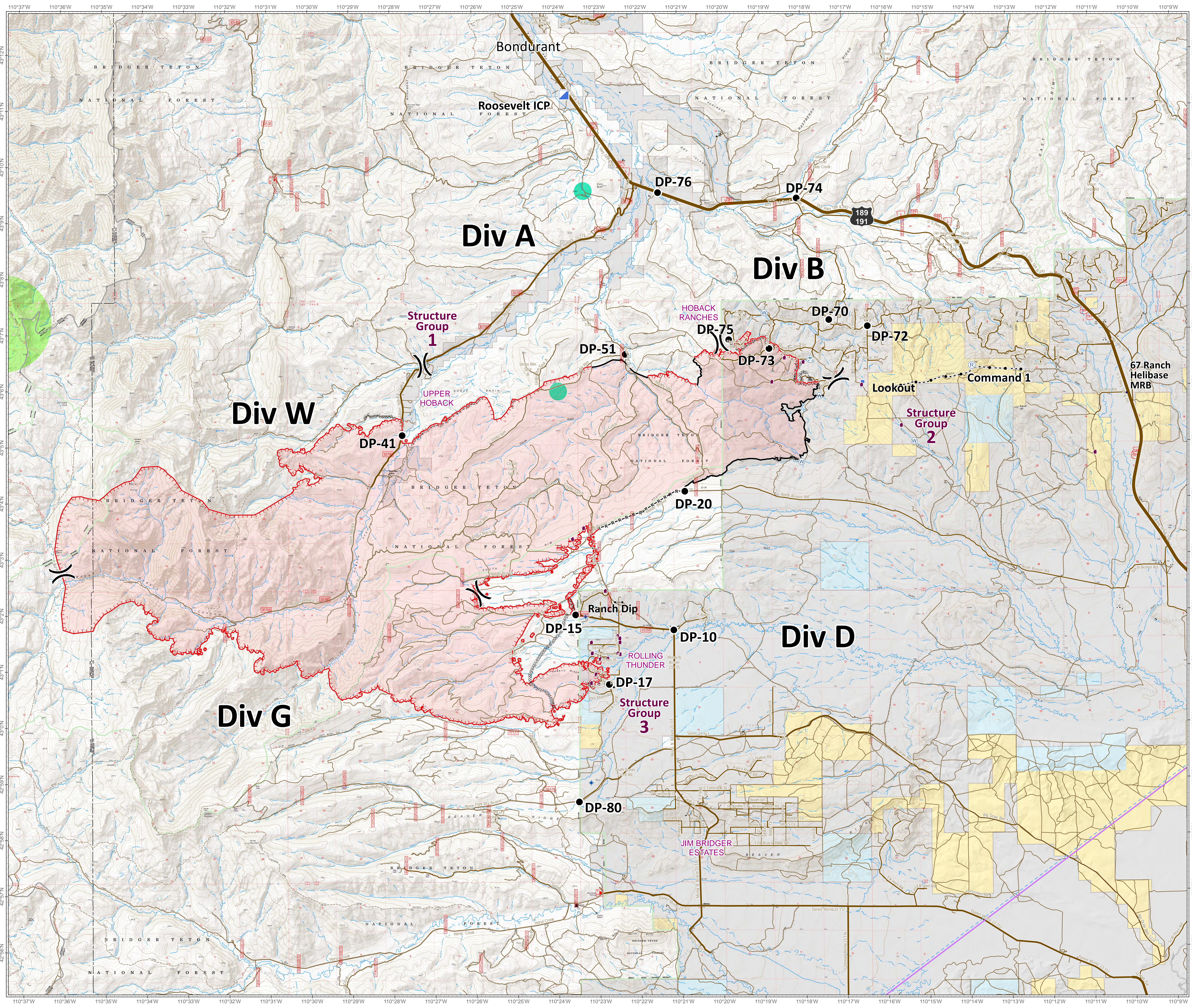


Roosevelt Fire  
WY-BTF-001823  
**Planning Map**  
September 22, 2018

approximately 36,602 acres  
on September 21, 2210 hr



- Fire Location
- Division Break
- Drop Point
- Incident Command Post
- Lookout
- Pump
- Repeater
- Dip Site
- Value at Risk
- Water Source
- Water Tank
- Completed Line
- Road as Completed Line
- Uncontrolled Fire Edge
- Completed Dozer Line
- Active Burnout
- Temporary Flight Restriction
- Fuel Break
- Sage Grouse Leaks**
- Heavy Equipment and Retardant Avoidance Area
- T and E Plant - Payson's Bladderpod Avoidance Area
- Land Ownership**
- Private Land
- Forest Service (Transparent)
- Bureau of Land Management
- State
- Water
- Roads**
- US Highway
- WY Highway
- County
- Local Road
- USFS Road
- Trail



Great Basin Team 6 GIS  
Author: bhansen  
Date: 20180922 0938 hr  
File: planning\_36648\_land\_2018\_Roosevelt\_WYBTF001823\_bhansen.mxd  
Lat-Long Grid Ticks: 1' minute interval  
Projection: NAD83 UTM Zone 12

**Roosevelt Maps**



bit.ly/rooseveltfire

