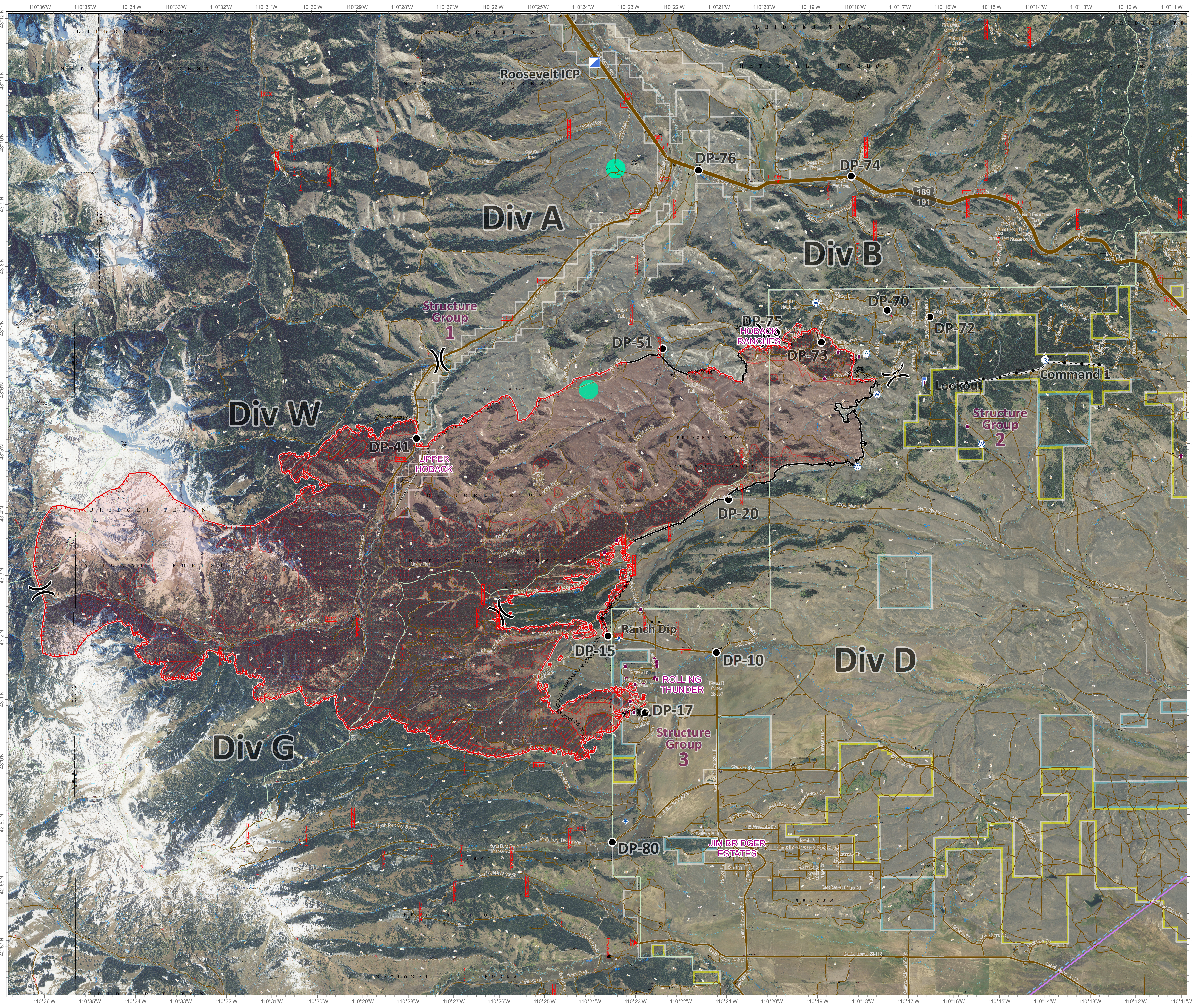


Roosevelt Fire  
 WY-BTF-001823  
**Planning  
 Imagery Map**  
 September 22, 2018

approximately 34,411 acres  
 on September 20, 2228 hr



- (X) Division Break
- Drop Point
- Ⓜ Incident Command Post
- Ⓡ Repeater
- Ⓜ Value at Risk
- Sage Grouse Leaks**
- Heavy Equipment and Retardant Avoidance Area
- Land Ownership**
- ▭ Private Land (White Outline)
- ▭ Forest Service (Transparent)
- ▭ Bureau of Land Management
- ▭ State
- Roads**
- US Highway
- WY Highway
- County
- Local Road
- USFS Road
- Trail



bit.ly/rooseveltfire

Great Basin Team 6 GIS  
 Author: lhanzen  
 Date: 20180922 1053 hr  
 File: planning\_imagery\_35448\_land\_2018\_Roosevelt\_WYBTF001823\_1.mxd  
 Projection: NAD83 UTM Zone12  
 Lat-Long Grid Ticks: 1' minute interval  
 0 0.5 1 2 Miles