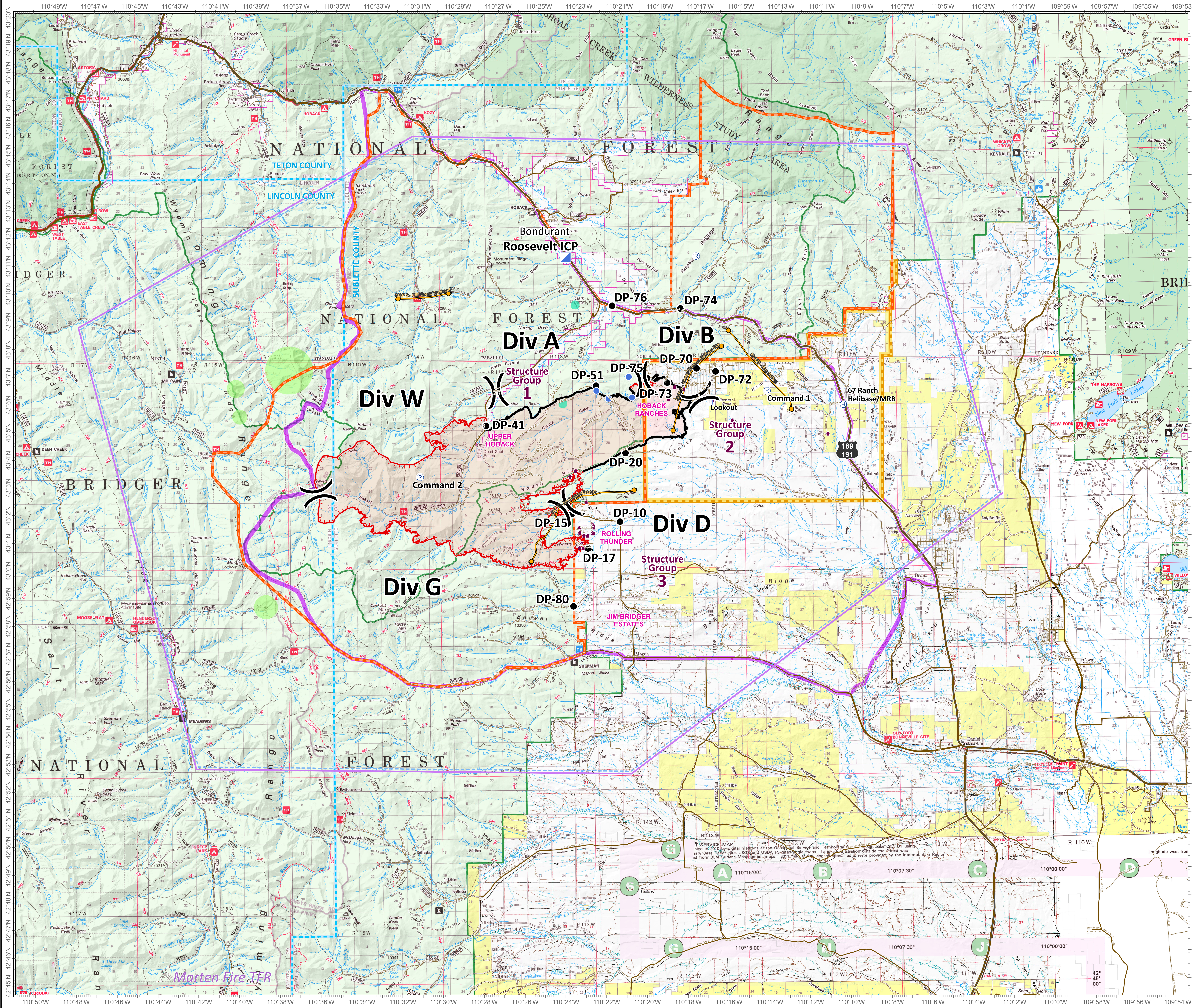


# Roosevelt Fire WY-BTF-001823 Situation Map September 22, 2018

approximately 36,602 acres  
on September 21, 2210 hr

- Division Break
- Drop Point
- Incident Command Post
- Lookout
- Repeater
- Value at Risk
- Uncontrolled Fire Edge
- Completed Line
- Temporary Flight Restriction
- Planning Area as of September 2011
- Management Action Point (MAP)
- USFS Closure Area as of September 22
- BLM Closure Area as of September 20
- County Boundary
- Forest Ranger District Boundary
- Private Inholdings near USFS
- Sage Grouse Leaks
- Heavy Equipment and Retardant Avoidance Area
- T and E Plant - Payson's Bladderpod
- Heavy Equipment Avoidance Area

- MAP 2 – Cliff Creek Trailhead**  
**CONDITIONS:**  
 Fire approaches the cliff creek trailhead/end of the cliff creek road(3053D road)  
**ACTIONS:**  
 Consider a road/area closure for the cliff creek drainage  
**RESOURCES:**  
 Two type 6 engines  
 One Sec2
- MAP 3 – Kismet Communications Site**  
**CONDITIONS:**  
 Fire threatens the communications site on Kismet Peak  
**ACTIONS:**  
 Consider implementing actions to protect the repeater infrastructure.  
**RESOURCES:**  
 This is an important interagency VAR, more specific info will be added
- MAP 5 – Rim Station**  
**CONDITIONS:**  
 Fire approaches Highway 189/191 north and west of Kismet communication site  
**ACTIONS:**  
 Recommend evacuation of Rim Station  
 Consider the need for closure of Highway 189/191  
**RESOURCES:**  
 (none specified)
- MAP 6 – Jim Bridger Estates**  
**CONDITIONS:**  
 Fire Reaches Rolling Thunder  
**ACTIONS:**  
 Recommend evacuation of Jim Bridger Estates  
**RESOURCES:**  
 (none specified)



**Roosevelt Maps**

bit.ly/rooseveltfire

**TEAM 6**

Great Basin Team 6 GIS  
 Author: bhansen  
 Date: 20180922 1743 hr  
 File: situation\_22sep\_and\_2018\_Roosevelt\_WYBTF001823.mxd  
 Lat-Long Grid Ticks: 1 minute Interval  
 Projection: NAD83 UTM Zone12

0 0.5 1 2 3 4 5 Miles