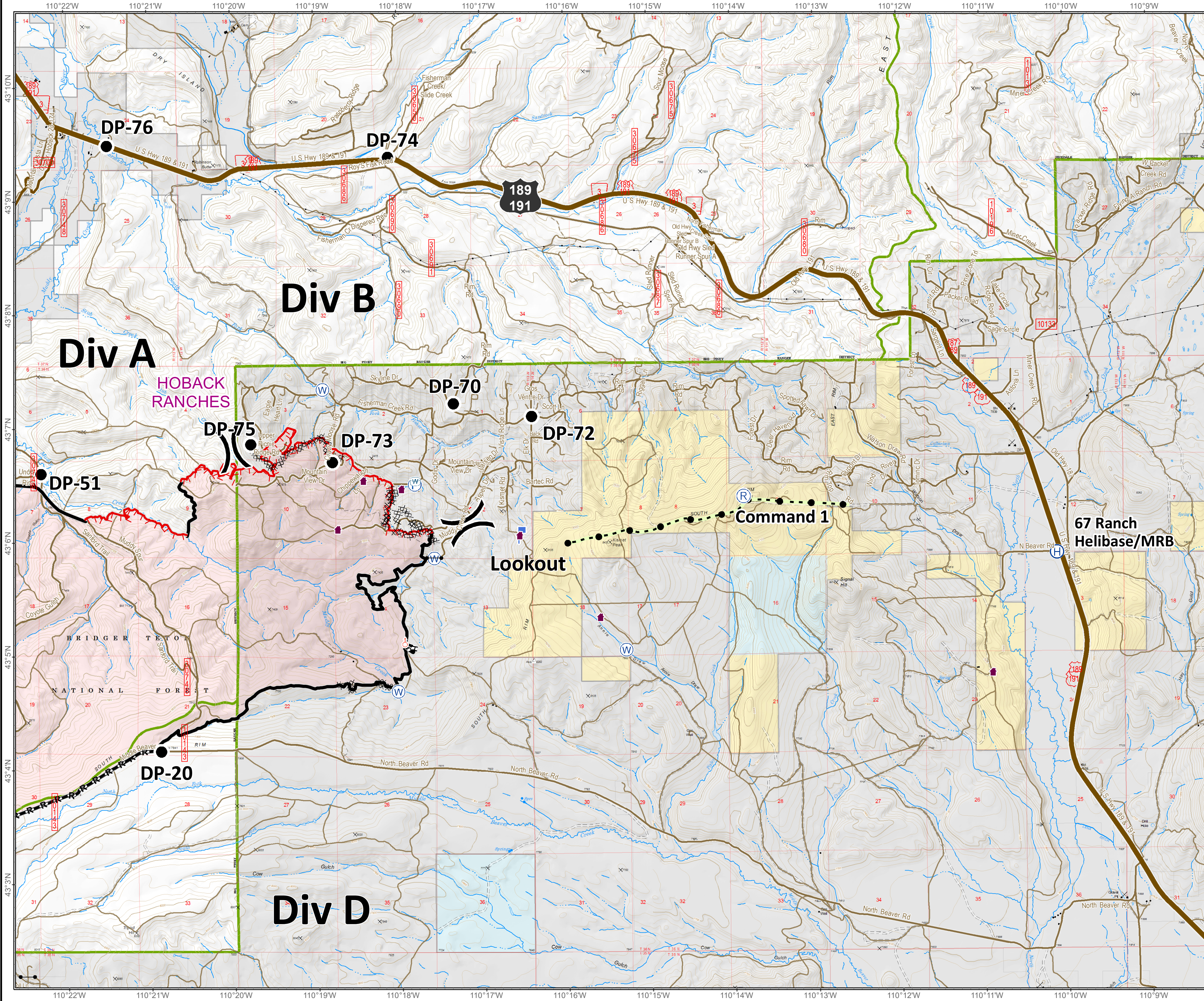
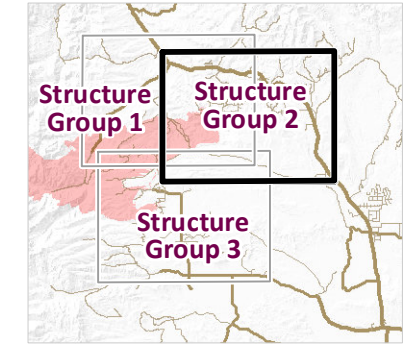


Roosevelt Fire
 WY-BTF-001823
Structure Group 2
Operations Map
 September 22, 2018

approximately 36,602 acres
 on September 21, 2210 hr



- Division Break
- Incident Command Post
- Helibase
- Drop Point
- Repeater
- Value at Risk
- Dip Site
- Water Source
- Water Tank
- Pump
- Gate
- Lookout
- Spot Fire
- Uncontrolled Fire Edge
- Completed Line
- Completed Dozer Line
- Road as Completed Line
- Completed Hand Line
- Active Burnout
- Fuel Break
- Land Ownership**
- Private Land
- Forest Service (Transparent)
- Bureau of Land Management
- State
- Roads**
- US Highway
- WY Highway
- County
- Local Road
- USFS Road
- Trail



Roosevelt Maps

bit.ly/rooseveltfire