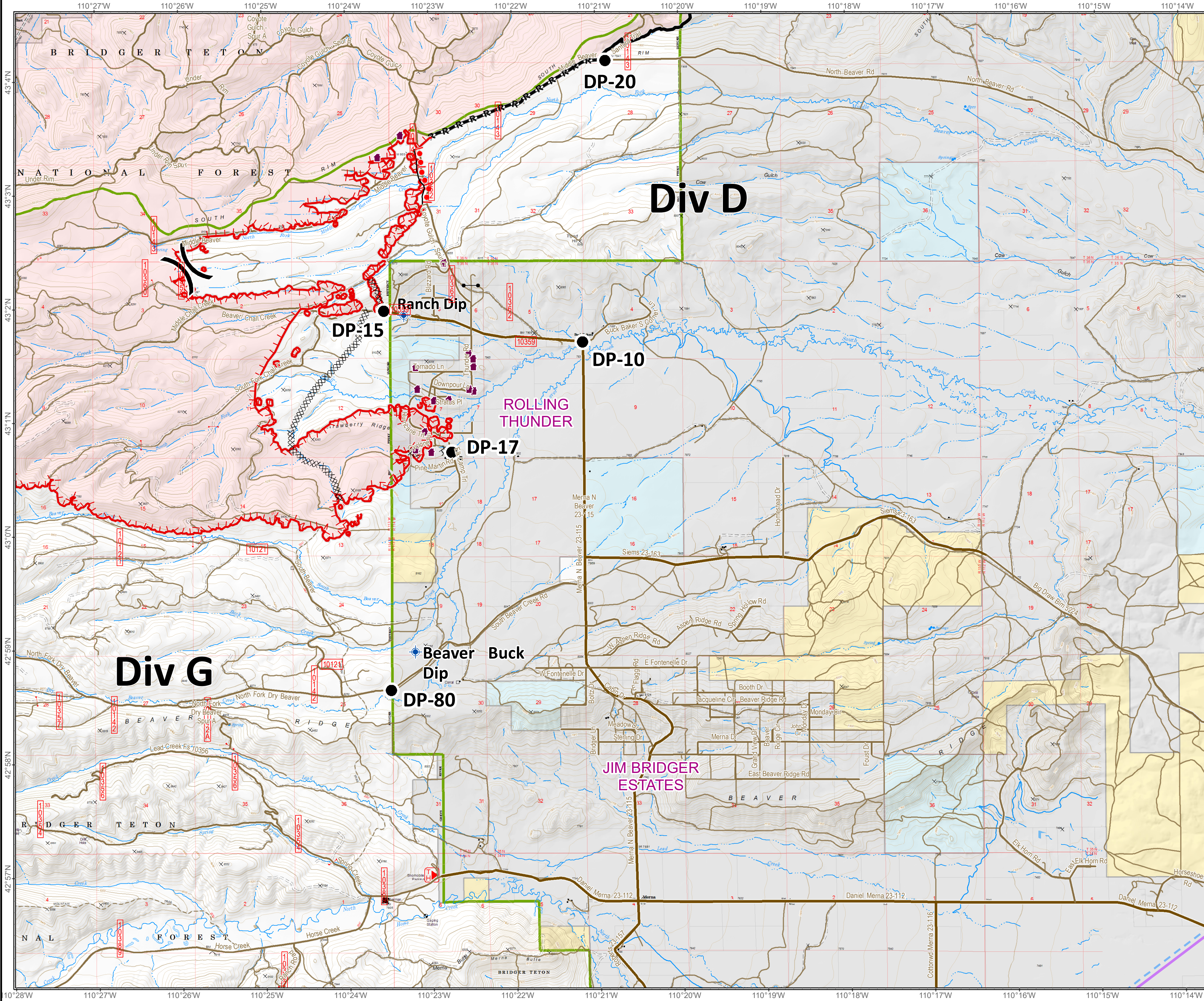
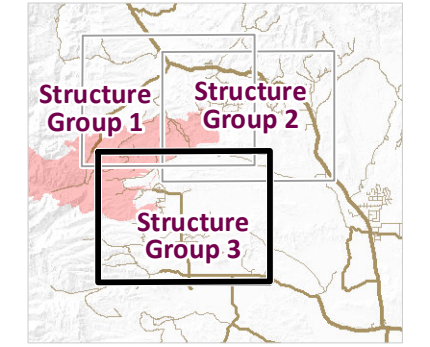


**Roosevelt Fire**  
 WY-BTF-001823  
**Structure Group 3**  
**Operations Map**  
 September 22, 2018

approximately 36,602 acres  
 on September 21, 2210 hr



- Division Break
  - Incident Command Post
  - Helibase
  - Drop Point
  - Repeater
  - Value at Risk
  - Dip Site
  - Water Source
  - Water Tank
  - Pump
  - Gate
  - Lookout
  - Spot Fire
  - Uncontrolled Fire Edge
  - Completed Line
  - Completed Dozer Line
  - Road as Completed Line
  - Active Burnout
  - Temporary Flight Restriction
- Land Ownership**
- Private Land
  - Forest Service (Transparent)
  - Bureau of Land Management
  - State
- Roads**
- US Highway
  - WY Highway
  - County
  - Local Road
  - USFS Road
  - Trail



**Roosevelt Maps**

[bit.ly/rooseultfire](https://bit.ly/rooseultfire)