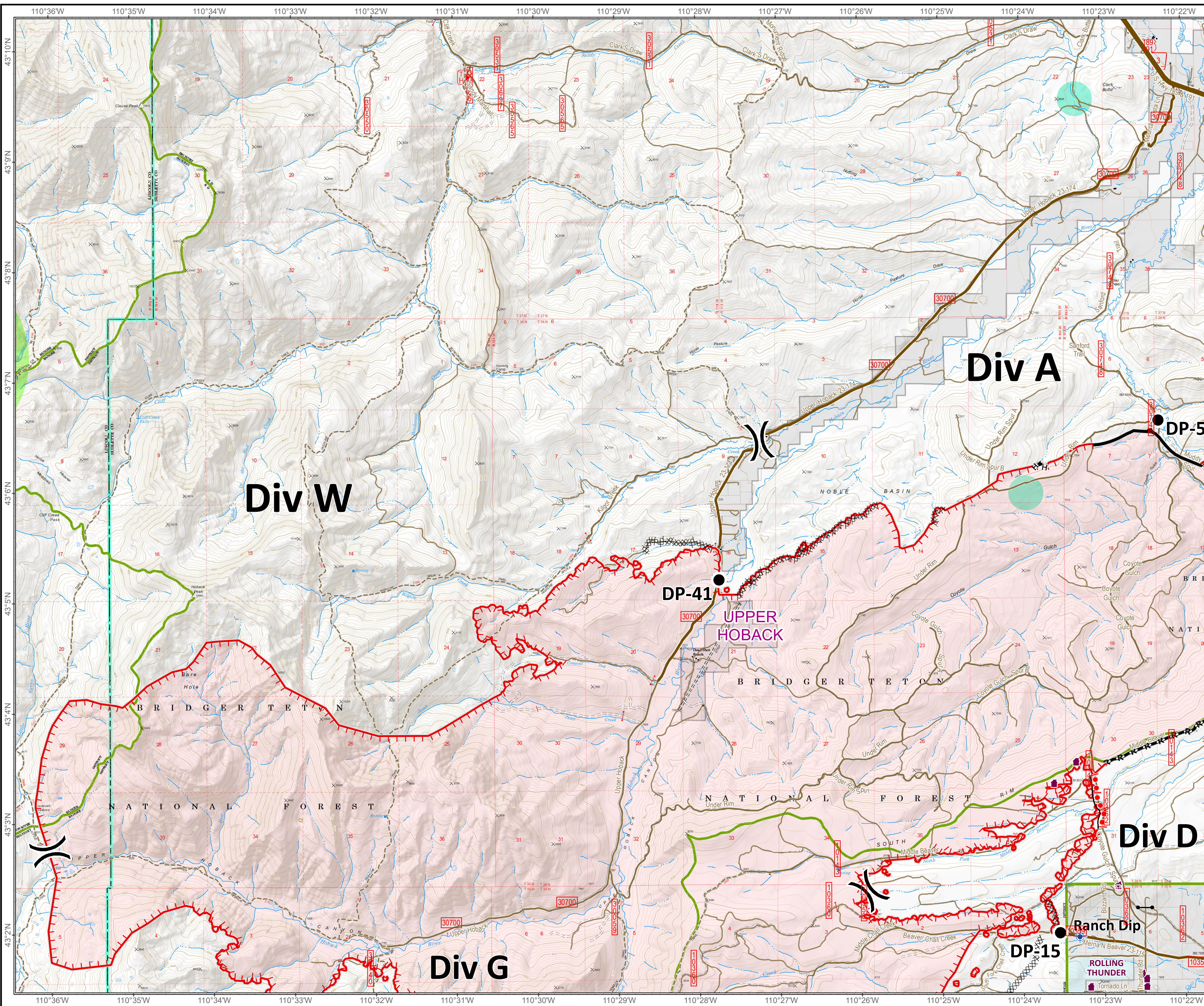


**Roosevelt Fire**  
 WY-BTF-001823  
**Structure Group 1**  
**Operations Map**  
 September 22, 2018

approximately 36,602 acres  
 on September 21, 2210 hr



- Division Break
- Incident Command Post
- Helibase
- Drop Point
- Repeater
- Value at Risk
- Dip Site
- Water Source
- Water Tank
- Pump
- Gate
- Lookout
- Spot Fire
- Uncontrolled Fire Edge
- Completed Line
- Completed Dozer Line
- Road as Completed Line
- Completed Hand Line
- Active Burnout
- Sage Grouse Leaks**
- Heavy Equipment and Retardant Avoidance Area
- T and E Plant - Payson's Bladderpod**
- Heavy Equipment Avoidance Area
- Land Ownership**
- Private Land
- Forest Service (Transparent)
- State
- USFS Forest/District Boundary
- County Boundary
- Roads**
- US Highway
- WY Highway
- County
- Local Road
- USFS Road
- Trail

