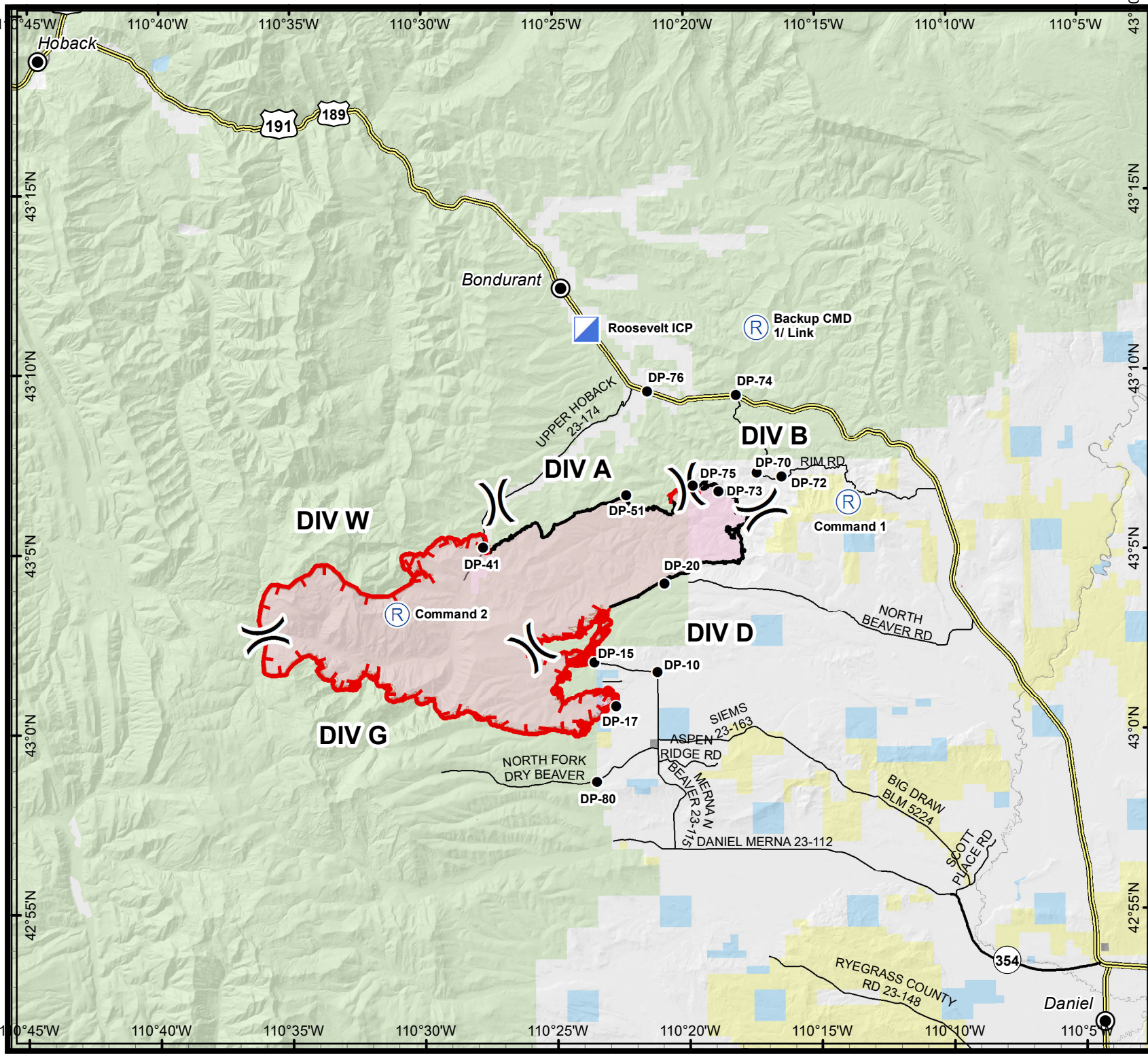


# Roosevelt Fire

WY-BTF-001823

## Transportation Map

Sept. 23, 2018  
39,283 acres



- Drop Point
- Incident Command Post
- Ⓡ Repeater
- Completed Line
- ⎵ Division Break
- ┌ Uncontrolled Fire Edge
- Forest Service
- Bureau of Land Management
- Private
- State



Great Basin Team 6 GIS  
author: lkobelt  
date: 20180923 0601 hr

Projection: NAD83 UTM Zone 12 N  
Lat-Long Grid Ticks: 5' minute interval

Miles 0 0.5 1 2 3 4 5