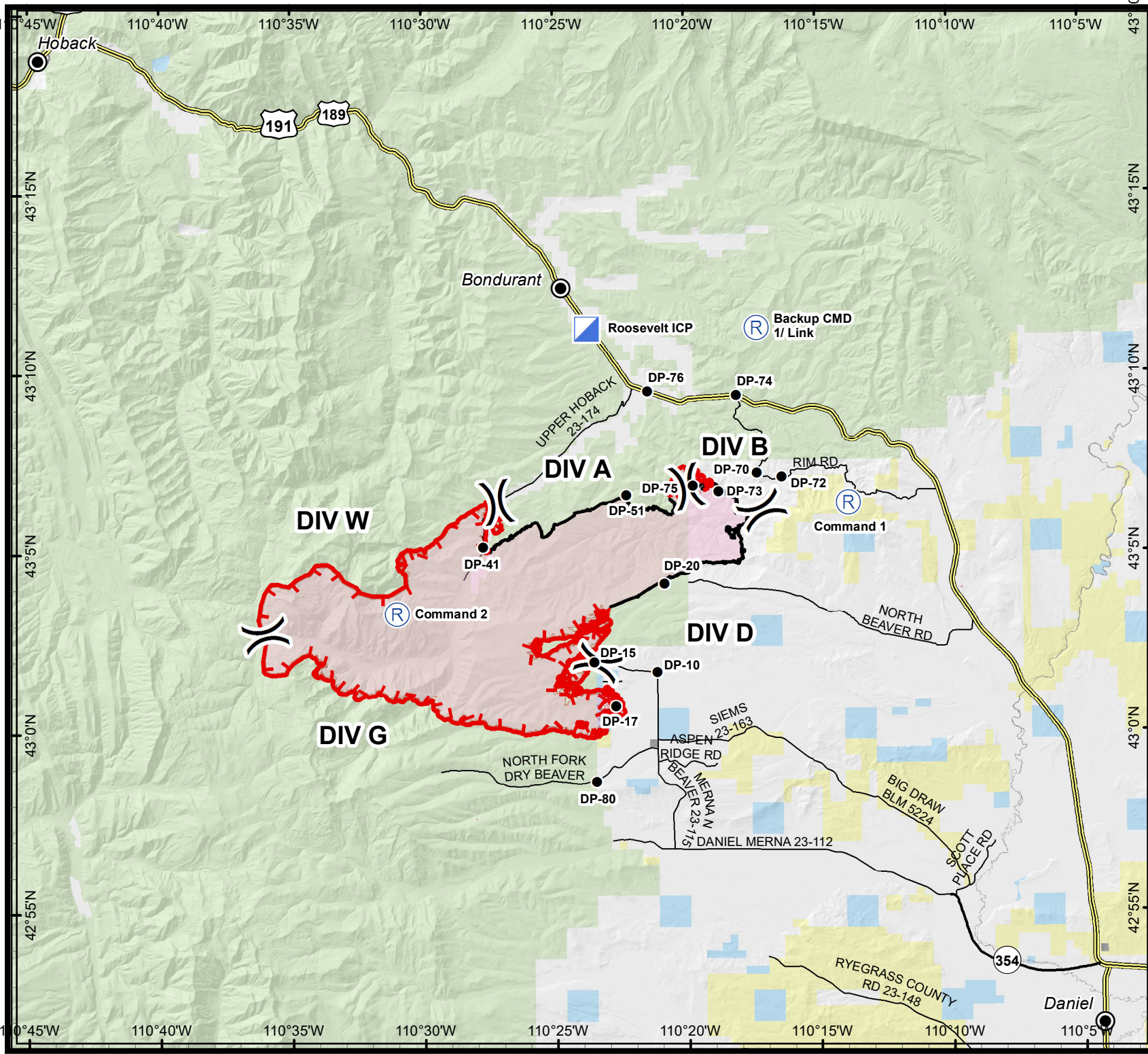


Roosevelt Fire

WY-BTF-001823

Transportation Map

Sept. 23, 2018
39,283 acres



- Drop Point
- Incident Command Post
- Ⓡ Repeater
- Completed Line
- ⎵ Division Break
- ┌ Uncontrolled Fire Edge
- Forest Service
- Bureau of Land Management
- Private
- State

GREAT BASIN MANAGEMENT TEAM TEAM 6

Roosevelt Maps
QR Code
bit.ly/rooseveltfire

Great Basin Team 6 GIS
author: lkobelt
date: 20180923 0642 hr

Projection: NAD83 UTM Zone 12 N
Lat-Long Grid Ticks: 5' minute interval

Miles 0 0.5 1 2 3 4 5