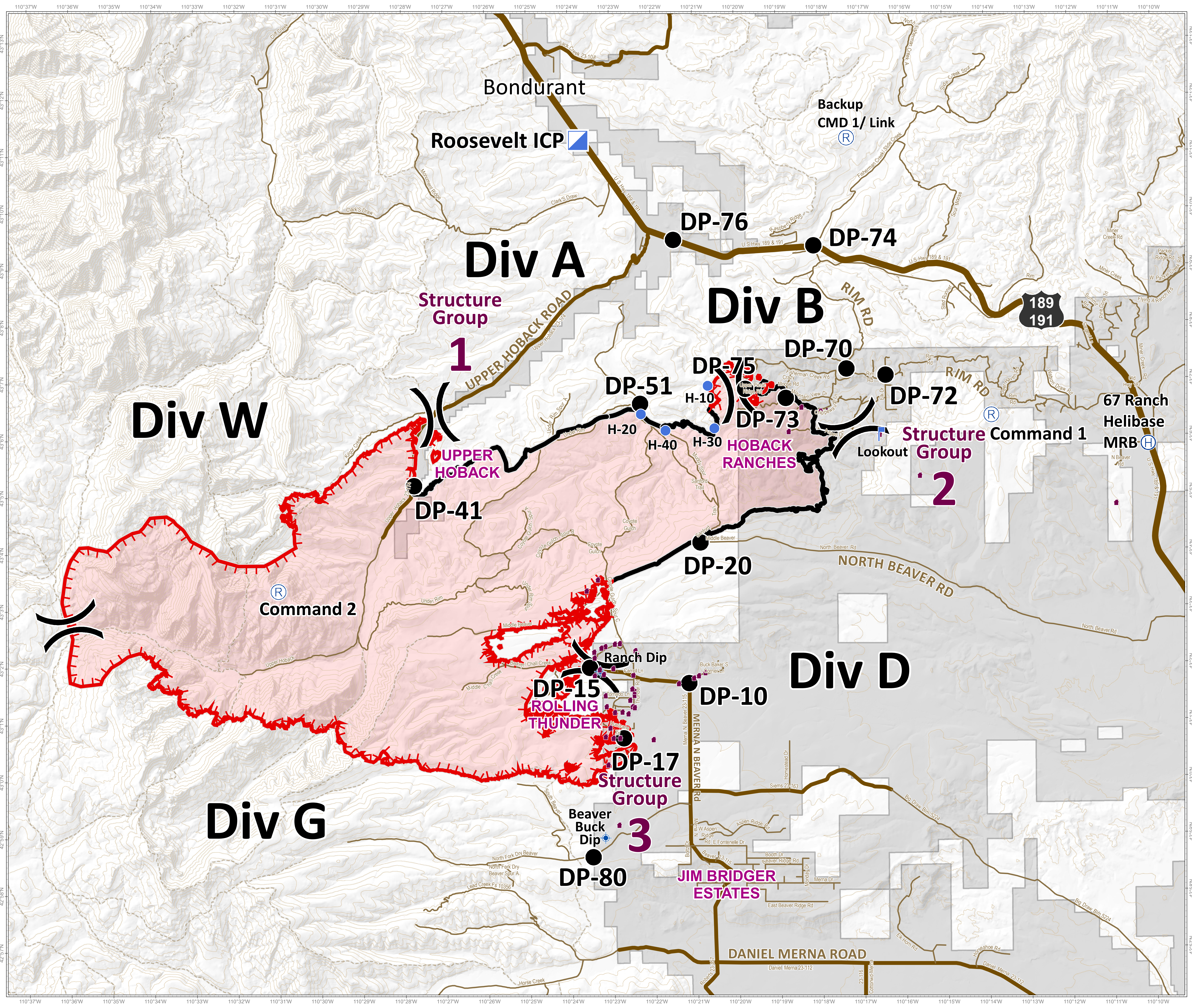


**Roosevelt Fire**  
 WY-BTF-001823  
**Briefing Map**  
 September 23, 2018

approximately 39,283 acres  
 on September 22, 2129 hr



- ( ) Division Break
- Incident Command Post
- Ⓜ Helibase
- Helispot
- Drop Point
- Ⓜ Dip Site
- Ⓜ Repeater
- Value at Risk
- Uncontrolled Fire Edge
- Completed Line
- Private Land
- Roads**
- US Highway
- County
- Local Road
- USFS Road
- Trail

**Roosevelt Maps**

bit.ly/rooseultfire

Great Basin Team 6 GIS  
 Author: bhansen  
 Date: 20180923 06:33  
 File: briefing\_36x48\_land\_2018\_Roosevelt\_WYBTF001823\_bhansen.mxd  
 Lat-Long Grid Ticks: 1' minute interval  
 Projection: NAD83 UTM Zone 12

0 0.5 1 2 Miles