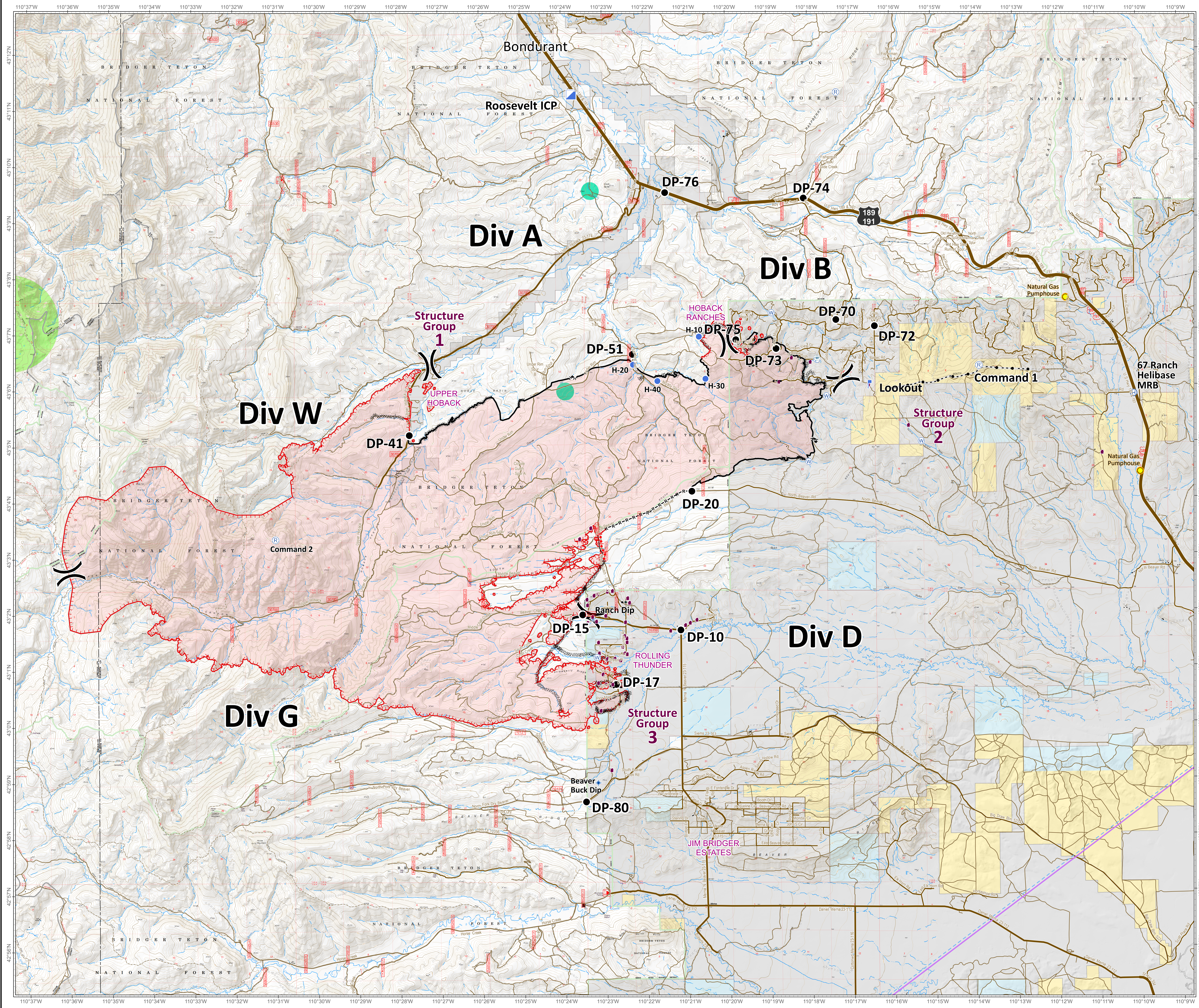


Roosevelt Fire
 WY-BTF-001823
Planning Map
 September 23, 2018

approximately 39,283 acres
 on September 22, 2129 hr



- Fire Location
- Division Break
- Drop Point
- Helibase
- Helispot
- Incident Command Post
- Lookout
- Pump
- Repeater
- Dip Site
- Value at Risk
- Water Source
- Water Tank
- Natural Gas Pumphouse
- Uncontrolled Fire Edge
- Completed Line
- Completed Dozer Line
- Completed Hand Line
- Road as Completed Line
- Active Burnout
- Temporary Flight Restriction
- Fuel Break
- Sage Grouse Leaks
- Heavy Equipment and Retardant Avoidance Area
- T and E Plant - Payson's Bladderpod
- Heavy Equipment Avoidance Area
- Land Ownership**
 - Private Land
 - Forest Service (Transparent)
 - Bureau of Land Management
 - State
 - Water
- Roads**
 - US Highway
 - WY Highway
 - County
 - Local Road
 - USFS Road
 - Trail

Great Basin Team 6 GIS
 Author: bhansen
 Date: 20180923 0538 hr
 File: planning_3648_land_2018_Roosevelt_WYBTF001823_bhansen.mxd
 Lat-Long Grid Ticks: 1' minute interval
 Projection: NAD83 UTM Zone12

Roosevelt Maps

bit.ly/rooseveltfire