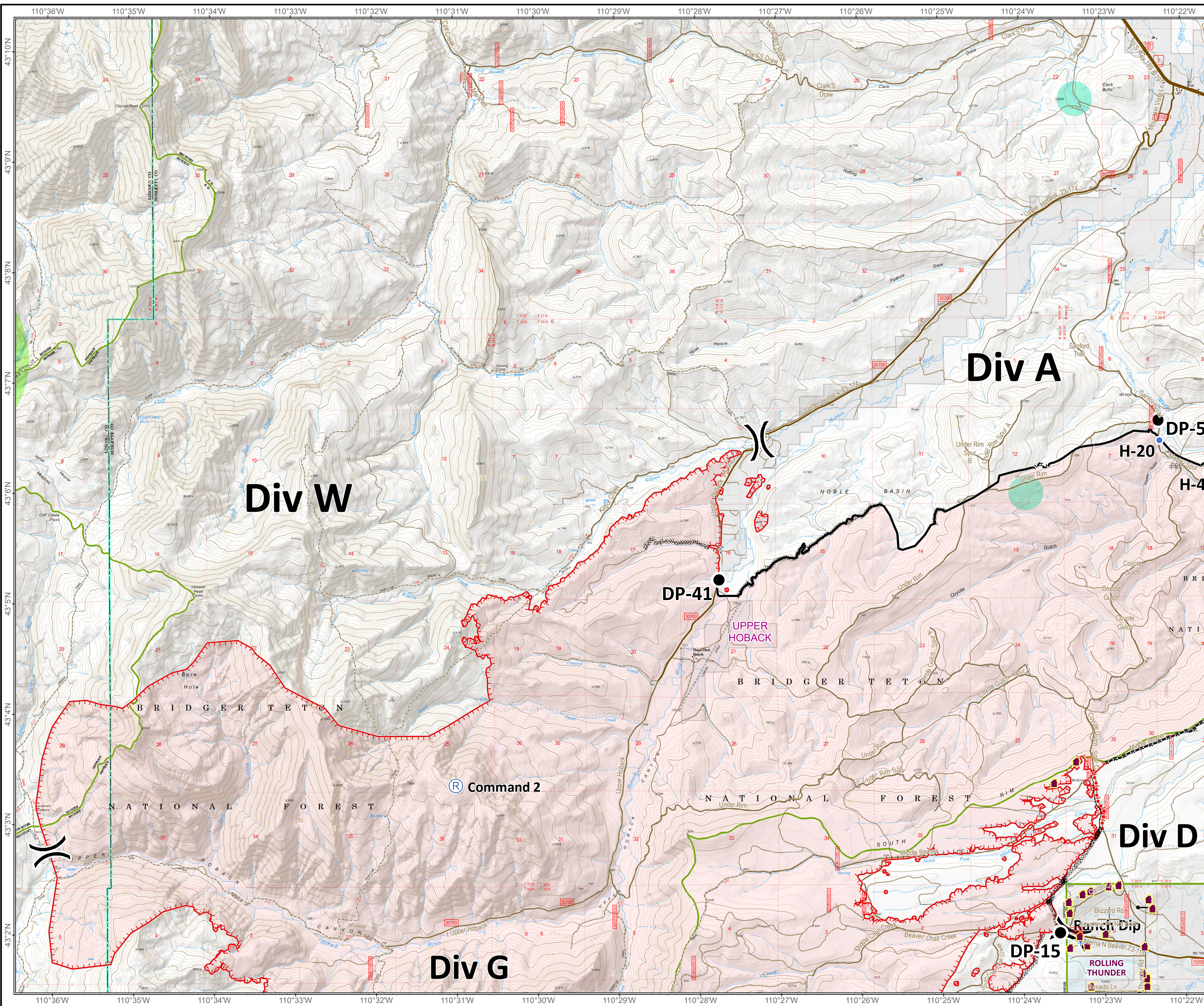


Roosevelt Fire
 WY-BTF-001823
Structure Group 1
Operations Map
 September 23, 2018

approximately 39,283 acres
 on September 22, 2129 hr



- () Division Break
- Incident Command Post
- Helibase
- Drop Point
- Ⓡ Repeater
- ⚠ Value at Risk
- Ⓧ Dip Site
- Ⓜ Water Source
- Ⓜ Water Tank
- Ⓟ Pump
- ⚡ Gate
- Ⓜ Lookout
- Ⓧ Spot Fire
- Ⓜ Natural Gas Pumphouse
- Uncontrolled Fire Edge
- Completed Line
- Ⓜ Completed Dozer Line
- R-R Road as Completed Line
- H-H Completed Hand Line
- Active Burnout
- Sage Grouse Leaks**
- Heavy Equipment and Retardant Avoidance Area
- T and E Plant - Payson's Bladderpod
- Heavy Equipment Avoidance Area
- Land Ownership**
- Private Land
- Forest Service (Transparent)
- State
- USFS Forest/District Boundary
- County Boundary
- Roads**
- US Highway
- WY Highway
- County
- Local Road
- USFS Road
- Trail

