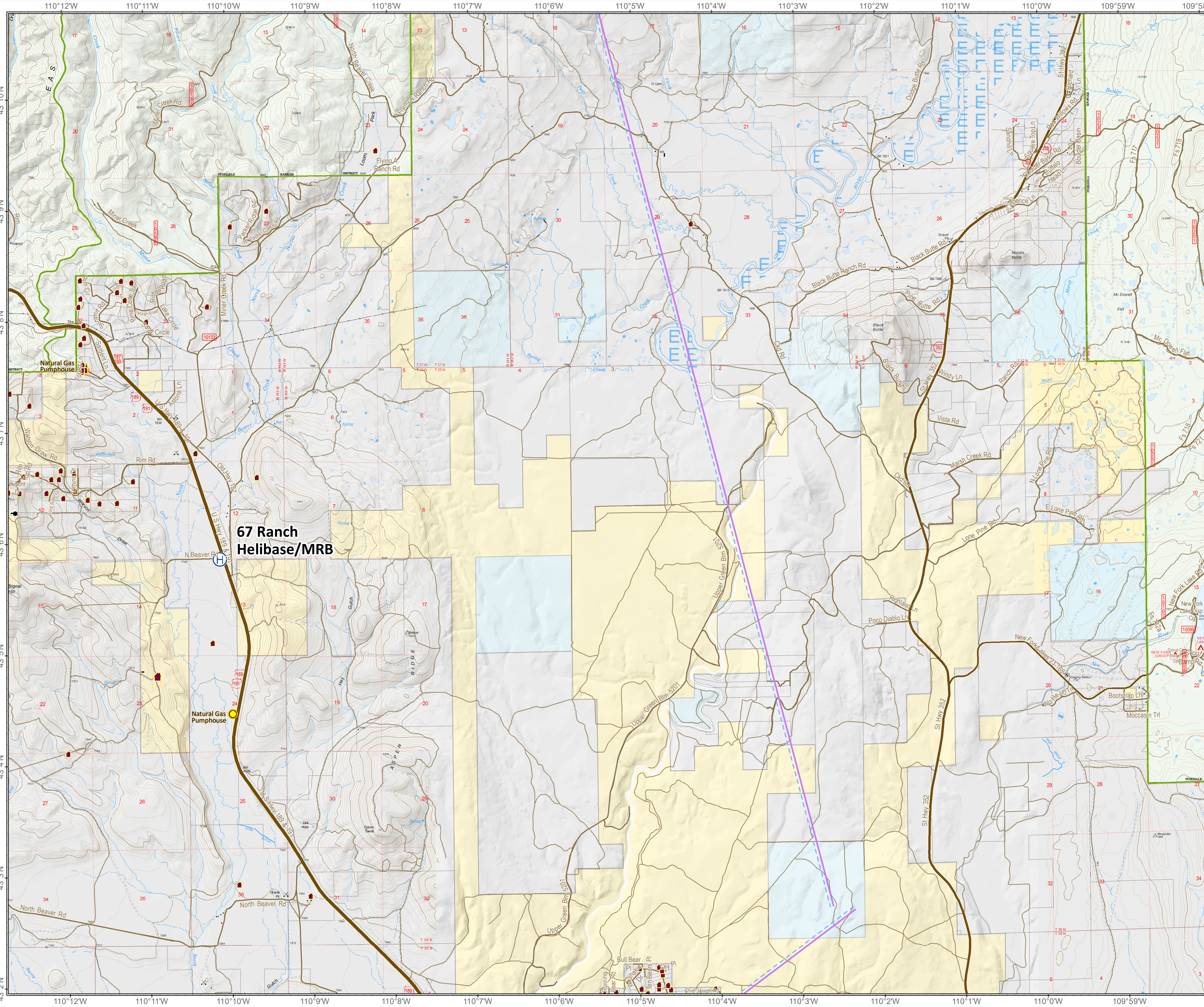


Roosevelt Fire
 WY-BTF-001823
Structure Group 2
East
Operations Map
 September 23, 2018
 approximately 39,283 acres
 on September 22, 2129 hr



- (X) Division Break
- Incident Command Post
- Helibase
- Drop Point
- Repeater
- Value at Risk
- Dip Site
- Water Source
- Water Tank
- Pump
- Gate
- Lookout
- Spot Fire
- Natural Gas Pumphouse
- Fuel Break
- Temporary Flight Restriction
- Land Ownership**
- Private Land
- Forest Service
- Bureau of Land Management
- State
- Water
- USFS Forest/District Boundary
- Roads**
- US Highway
- WY Highway
- County
- Local Road
- USFS Road

