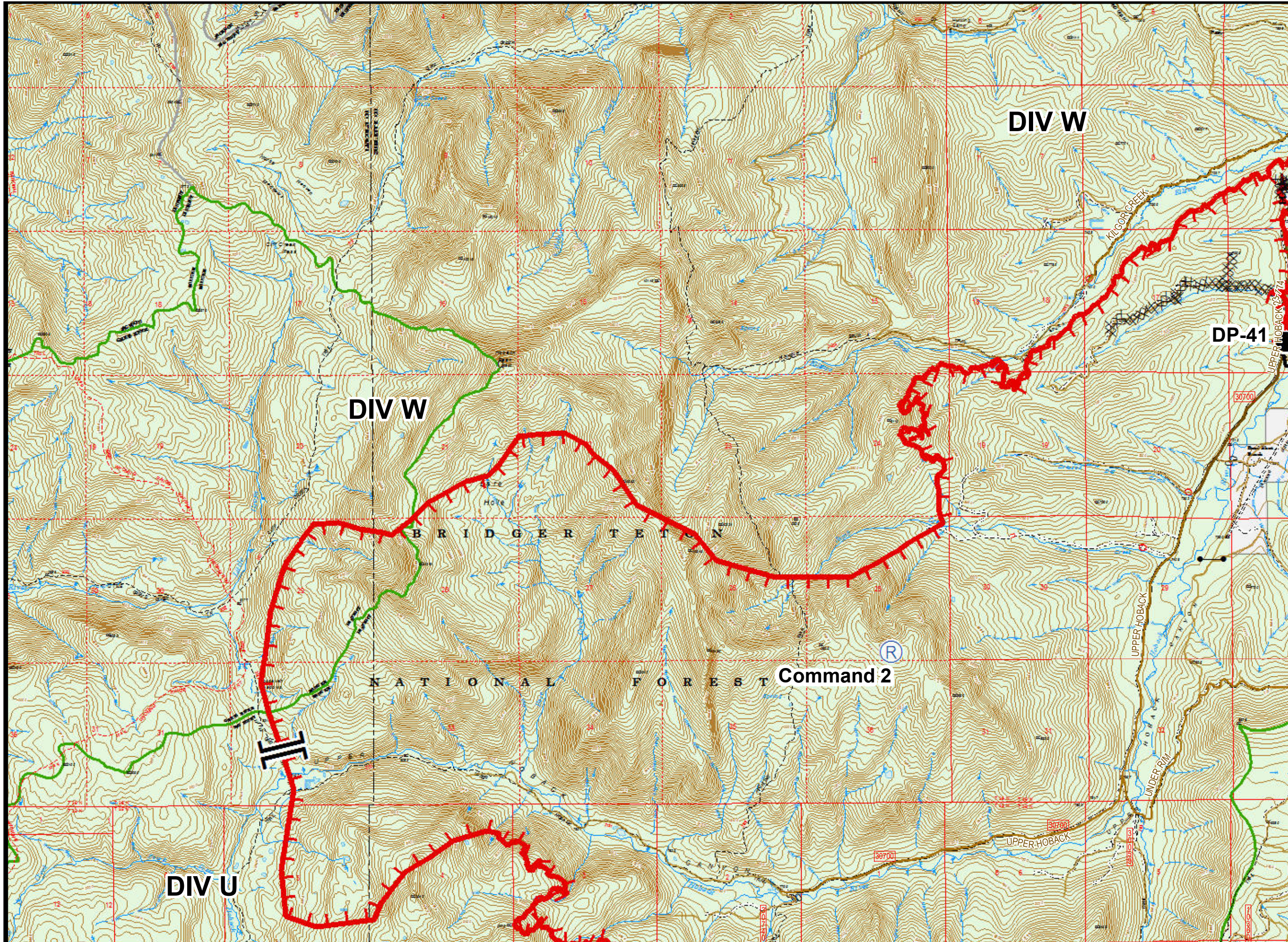
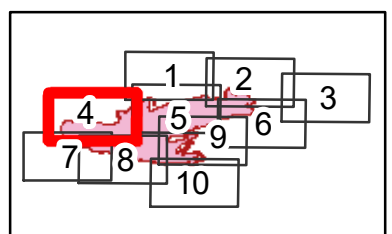


Roosevelt Fire
 WY-BTF-001823
IAP Tile Map
 September 24, 2018

appx. 39,283 acres on
 September 22, 2129 hr



- Dip Site
- Drop Point
- Gate
- Helibase
- Helispot
- Incident Command Post
- Uncontrolled Fire Edge
- Completed Line
- Completed Dozer Line
- Completed Hand Line
- Road as Completed Line
- Line Break Completed
- Active Burnout
- Proposed Dozer Line
- Trail
- Lookout
- Pump
- Repeater
- Water Source
- Water Tank
- Branch Break
- Division Break



Great Basin Team 6 GIS
 Author: Bobbett
 Date: 20180923 2345 hr
 File: AAA_IAP_Tiles_11x17_land_2018_Roosevelt_WYBTF001823.mxd

Projection: NAD83 UTM Zone 12
 Lat-Long Grid Ticks: 1' minute interval