







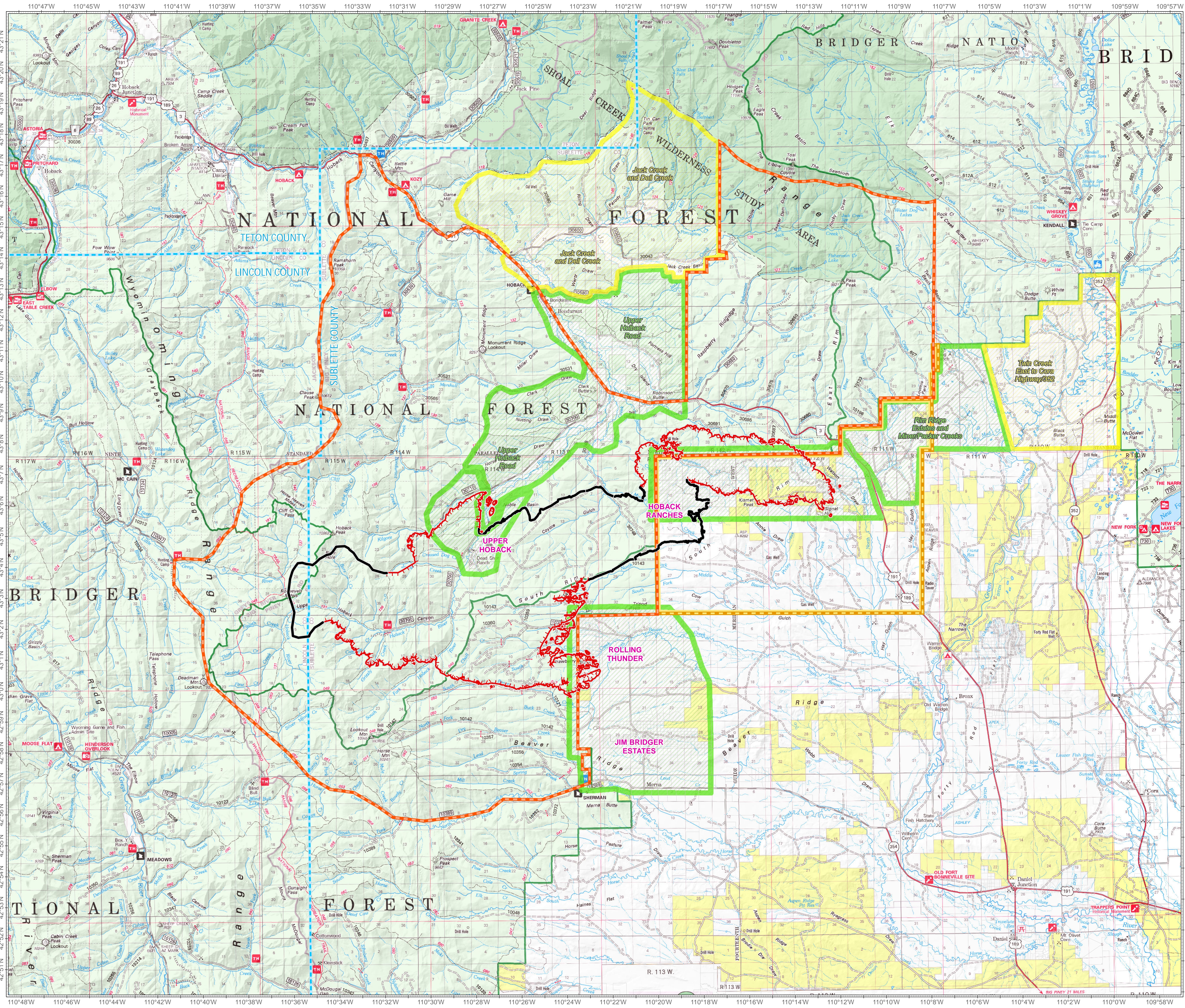


# Roosevelt Fire WY-BTF-001823 Evacuation September 24, 2018

approximately 48,348 acres  
on September 23, 2123 hr

-  Uncontrolled Fire Edge
  -  Completed Line
  -  USFS Closure Area as of September 22
  -  BLM Closure Area as of September 20
  -  County Boundary
  -  Forest Ranger District Boundary
- Evacuation Areas  
Status
-  Go
  -  Set





**Roosevelt Maps**



bit.ly/rooseveltfire

Great Basin Team 6 GIS  
 Author: bilalva  
 Date: 20180924 0910 hr  
 File: Evac\_36483\_land\_2018\_Roosevelt\_WYBTF001823\_mxd  
 Lat-Long Grid Ticks: 1 minute Interval  
 Projection: NAD83 UTM Zone12

