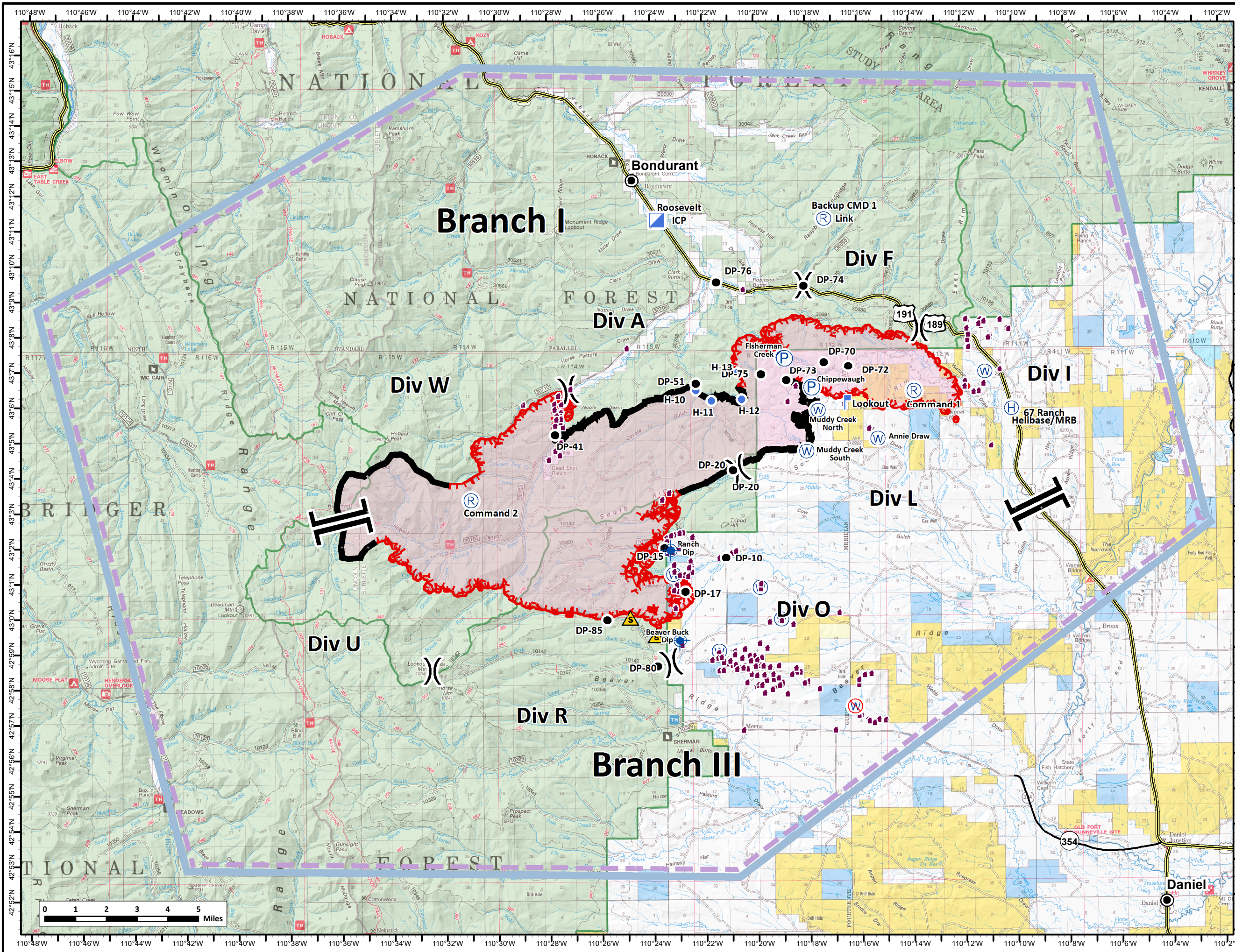


# Roosevelt Fire WY-BTF-001823 Pilot Map

Sep 24, 2018  
48,348 acres  
as of 09/23/2018 2123



Helibase	
67 Ranch Helibase/MRB	43° 5.850' N 110° 10.116' W
Pinedale	42° 47.864' N 109° 48.180' W
Helispot	
H-10	43° 6.421' N 110° 22.286' W
H-11	43° 6.128' N 110° 21.697' W
H-12	43° 6.163' N 110° 20.525' W
H-13	43° 6.913' N 110° 20.680' W
Dip Site	
Beaver Buck Dip	42° 59.328' N 110° 22.978' W
Ranch Dip	43° 1.899' N 110° 23.304' W
Water Source	
Annie Draw	43° 5.024' N 110° 15.289' W
Chippewaugh	43° 6.489' N 110° 17.814' W
Fisherman Creek	43° 7.329' N 110° 18.915' W
Hurricane	43° 1.203' N 110° 23.209' W
Muddy Creek North	43° 5.839' N 110° 17.588' W
Muddy Creek South	43° 4.670' N 110° 18.031' W
Pond	42° 59.931' N 110° 19.054' W
Pond	43° 0.821' N 110° 19.863' W
Ponds	42° 59.023' N 110° 21.471' W
Stock pond	43° 6.903' N 110° 11.140' W
Restricted Water Source	
HAZARDS NO DIP	42° 57.444' N 110° 16.235' W
Repeater	
Backup CMD I/ Link	43° 11.256' N 110° 17.305' W
Command I	43° 6.367' N 110° 13.872' W
Command 2	43° 3.331' N 110° 31.007' W
Incident Command Post	
Roosevelt ICP	43° 11.244' N 110° 23.753' W
Lookout	<null> 43° 6.037' N 110° 16.559' W
Safety Zone	
<null>	42° 59.462' N 110° 23.882' W
<null>	42° 59.979' N 110° 24.887' W

- Dip Site
- Drop Point
- Helibase
- Helispot
- ICP
- Lookout
- Pump
- Repeater
- Safety Zone
- Water Source
- Water Tank
- Restricted Water Source
- Value at Risk
- Division Break
- Branch Break
- Uncontrolled Fire Edge
- Completed Line
- TFR

ROOSEVELT FIRE  
TEAM 6

Roosevelt Maps  
bt.ly/rooseveltfire