



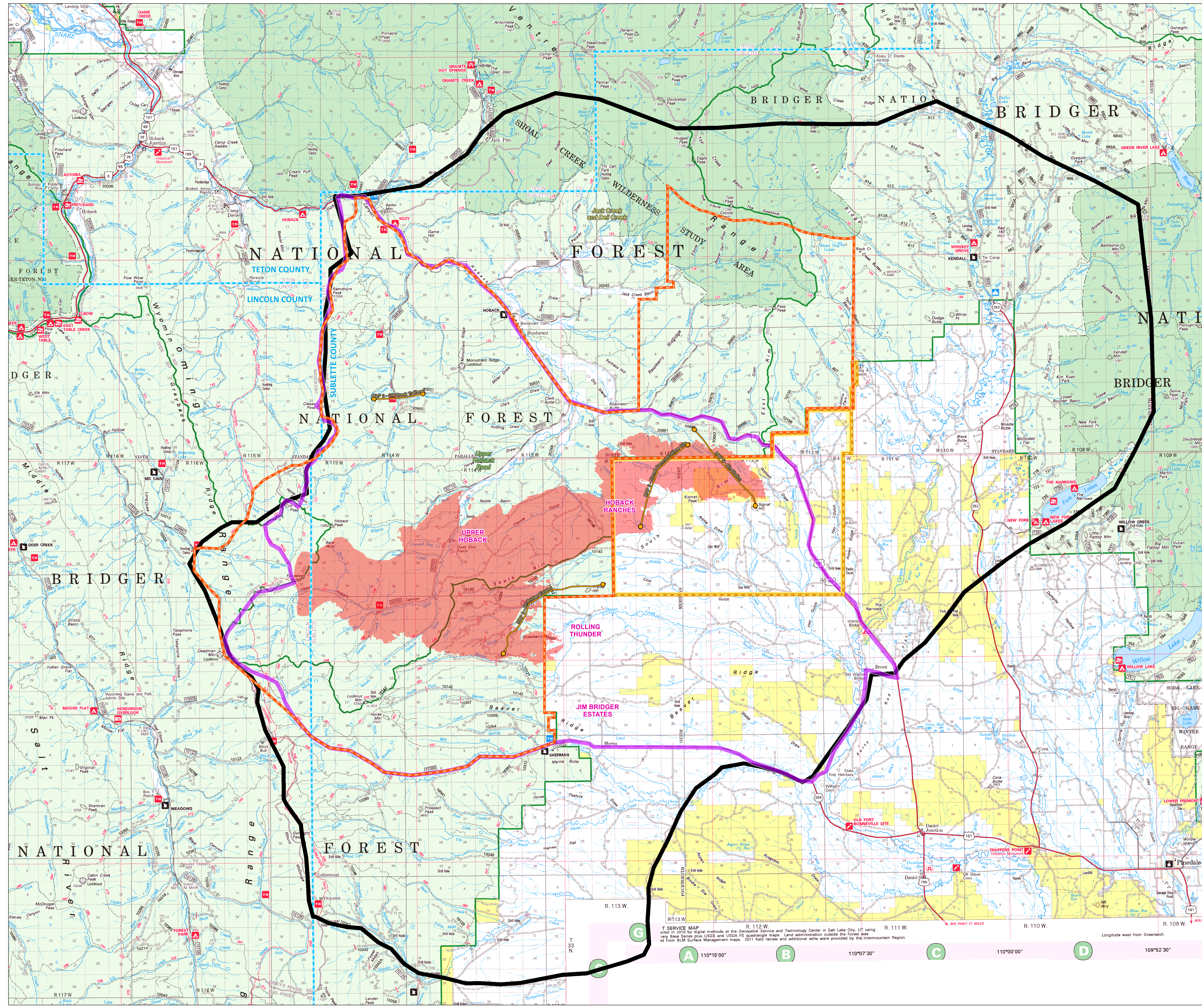


Roosevelt Fire  
 WY-BTF-001823  
**Planning Area  
 Map**  
 September 24, 2018  
 approximately 48,348 acres  
 on September 23, @ 2123 hrs


- Legend**
-  USFS Closure Area as of 9/22
  -  BLM Closure Area as of 9/20
  -  Planning Area as of 9/21
  -  Planning Pending 9/24




- MAP 2 – Cliff Creek Trailhead**  
**CONDITIONS:**  
 Fire approaches the cliff creek trailhead/end of the cliff creek road(30530 road)  
**ACTIONS:**  
 Consider a road/area closure for the cliff creek drainage  
**RESOURCES:**  
 Two type 6 engines  
 One Sec2
- MAP 3 – Kismet Communications Site**  
**CONDITIONS:**  
 Fire threatens the communications site on Kismet Peak  
**ACTIONS:**  
 Consider implementing actions to protect the repeater infrastructure.  
**RESOURCES:**  
 This is an important interagency VAR, more specific info will be added
- MAP 5 – Rim Station**  
**CONDITIONS:**  
 Fire approaches Highway 189/191 north and west of Kismet communication site  
**ACTIONS:**  
 Recommend evacuation of Rim Station  
 Consider the need for closure of Highway 189/191  
**RESOURCES:**  
 (none specified)
- MAP 6 – Jim Bridger Estates**  
**CONDITIONS:**  
 Fire Reaches Rolling Thunder  
**ACTIONS:**  
 Recommend evacuation of Jim Bridger Estates  
**RESOURCES:**  
 (none specified)

T. SERVICE MAP  
 dated in 2010 by digital methods at the Geospatial Science and Technology Center in Salt Lake City, UT using  
 very Base Series plus USGS and USDA FS quadrangle maps. Land administration outside the Forest was  
 derived from BLM Surface Management maps. 2011 field review and additional edits were provided by the Intermountain Region.

**Roosevelt Maps**



bit.ly/rooseveltfire



Great Basin Team 6 GIS  
 Author: jpkidmore  
 Date: 20180924 1610hr  
 File: PlanningArea\_Archie\_Land\_2018\_Roosevelt\_WYBTF001823\_V106.mxd  
 Lat-Long Grid Ticks: 1 minute interval  
 Projection: NAD83 UTM Zone12

0 0.5 1 2 3 4 5 Miles