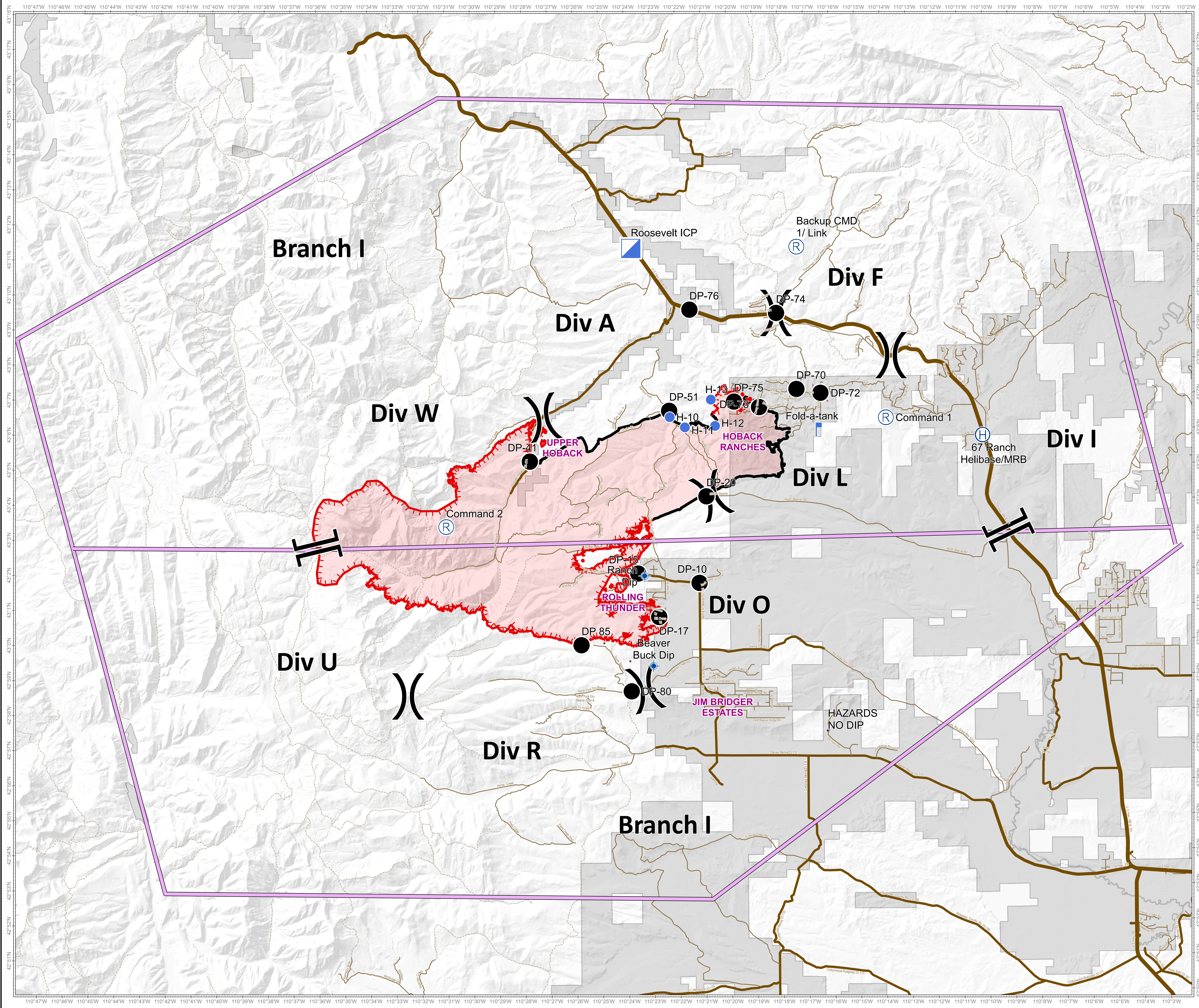


Roosevelt Fire
 WY-BTF-001823
Briefing Map
 September 24, 2018

approximately 39,283 acres
 on September 22, 2129 hr



- () Division
- Incident Command Post
- ⊕ Dip
- Drop
- ⊕ Dip
- Ⓡ Value at
- Uncontrolled Fire Edge
- Completed
- Private
- Roads**
- US
- WY
- Local
- USFS