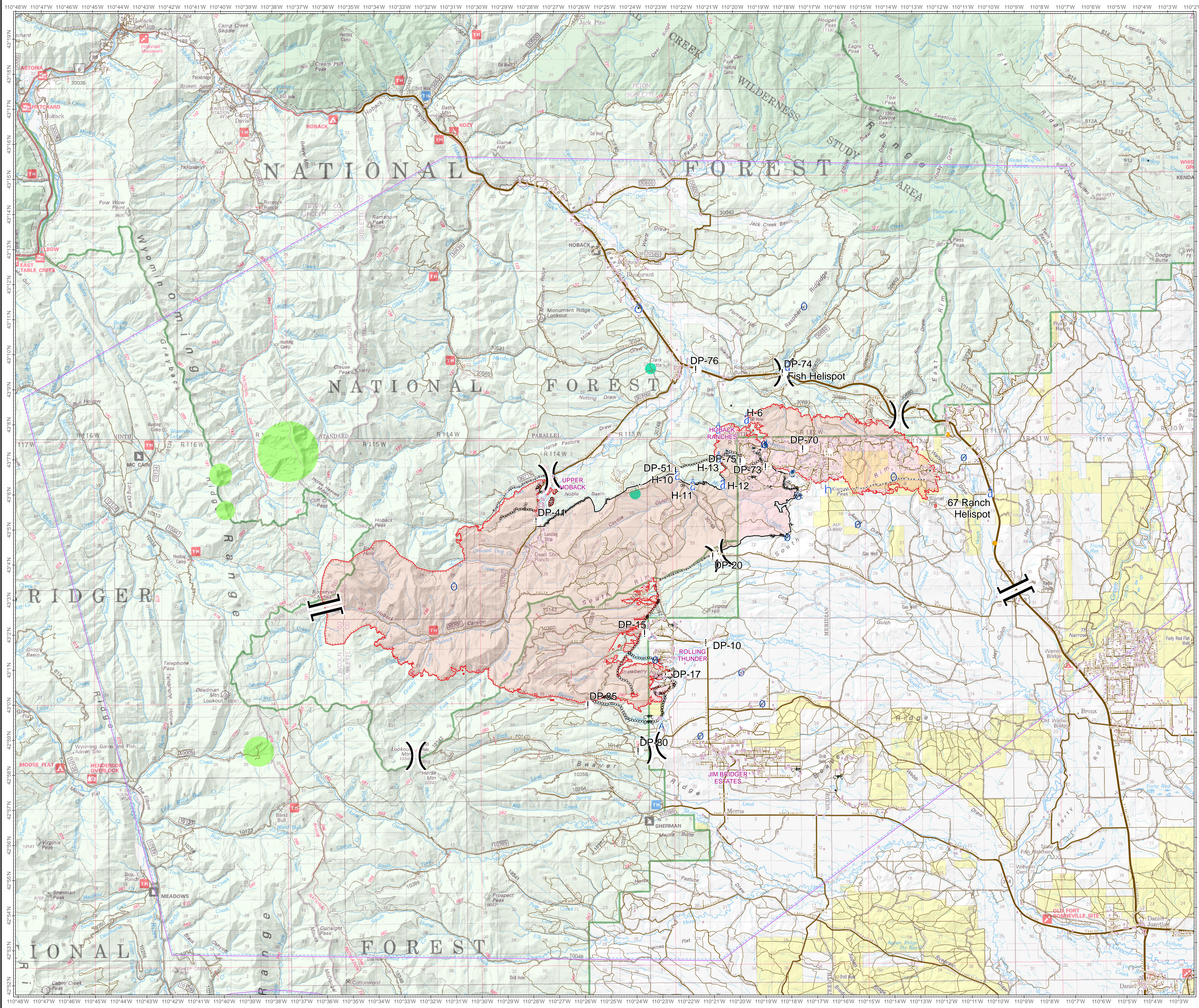


Roosevelt Fire WY-BTF-001823 Planning Map September 24, 2018

approximately 48,349 acres
on September 23, 2123 hr



- || Branch Break
-) Division Break
- ! Drop Point
- o Helibase
- Helispot
- o Incident Command Post
- h Lookout
- o Pump
- o Repeater
- A Dip Site
- 8 Value at Risk
- o Water Source
- o Water Tank
- Fire Location
- Natural Gas Pumphouse
- Uncontrolled Fire Edge
- Completed Line
- Completed Dozer Line
- Completed Hand Line
- Road as Completed Line
- Active Burnout
- Temporary Flight Restriction
- Fuel Break
- Sage Grouse Leaks
- Heavy Equipment and Retardant Avoidance Area
- T and E Plant - Payson's Bladderpod
- Heavy Equipment Avoidance Area
- Roads
- US Highway
- WY Highway
- County
- Local Road
- USFS Road
- Trail