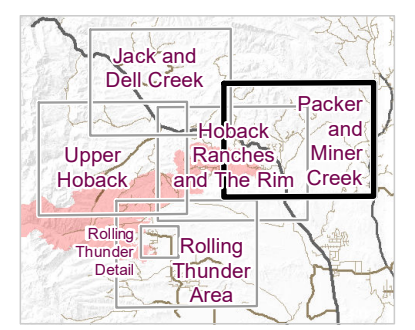


Roosevelt Fire

Packer and Miner Creek Operations Map September 24, 2018 WY-BTF-001823

approximately 39,283 acres
on September 22, 2129 hr

- () Division Break
- Incident Command Post
- ⊕ Helibase
- Drop Point
- Ⓡ Repeater
- ⚠ Value at Risk
- Ⓜ Dip Site
- Ⓜ Water Source
- Ⓜ Water Tank
- Ⓜ Pump
- Ⓜ Gate
- Ⓜ Lookout
- Ⓜ Spot Fire
- Ⓜ Natural Gas Pumphouse
- Ⓜ Uncontrolled Fire Edge
- Ⓜ Fuel Break
- Ⓜ Temporary Flight Restriction
- Land Ownership**
- Private Land
- Forest Service
- Bureau of Land Management
- State
- Water
- USFS Forest/District Boundary
- National Wilderness Area
- Roads**
- US Highway
- WY Highway
- County
- Local Road
- USFS Road
- Trail



Roosevelt Maps

Great Basin Team 6 GIS
Author: bhanon
Date: 20180924 08:19 hr
File: structure_18x24_land_2018_Roosevelt_WYBTF001823_mxd

Lat-Long Grid Ticks: 1' minute interval
Projection: NAD83 UTM Zone12

